

National Certification Examination Information Bulletin

PUBLISHED January 26, 2012

VALID January—February 2012

This edition supersedes all previous bulletin editions, and is valid only through the dates noted above.

**International Code Council
Certification and Testing Department
Birmingham District Office
900 Montclair Road
Birmingham, AL 35213**

1-888-ICC-SAFE (422-7233), ext. 5524

www.iccsafe.org/inspector

IMPORTANT NOTES:

**ICC will offer paper-and-pencil exams based on the 2006, 2009, and 2012
International Codes through 2012.**

The 2006 code-based exams will be available via paper-and-pencil testing only.

The 2009 code-based exams will be available via paper-and-pencil or computer-based testing through at least June 2012, with exceptions noted in this bulletin.

The 2012 code-based exams will be available via paper-and-pencil testing through June 2012, with exceptions noted in this bulletin, and via computer-based testing in July. Visit www.iccsafe.org/inspector for updated details on availability.

About this bulletin:

**Please read and understand this bulletin in its entirety prior to registering for an exam.
The answers to most questions raised by candidates can be found in this document.
This bulletin is a useful reference throughout your registration and examination process.**

SUMMARY OF BULLETIN CHANGES

Date of Change	Section Affected	Revision
November 1, 2011	National Certification Examinations Based on 2009 International Codes	Clarified reference title for 01 and 14 exams
January 1, 2012	National Certification Examinations Based on 2009 International Codes	Removed IFSTA, IBC, and IFC references from FM exam
January 1, 2012	National Certification Examinations Based on 2012 International Codes	Removed IFSTA, IBC, and IFC references from FM exam
January 1, 2012	Test Site Regulations	Revised list of acceptable items at test site
January 1, 2012	Table of Contents	Added clarification of printed code edition
January 1, 2012	Computer-based Testing	Revised payment options
January 1, 2012	National Certification Examinations Based on 2009 International Codes	Clarified reference for S1 exam
January 26, 2012	n/a	Clarified P&P availability of 2012 exams

You are welcome to use any of the checklists and summaries of information within this bulletin to familiarize yourself with the testing process, but be sure to read this bulletin in its entirety prior to scheduling your examination. You are responsible for following all policies and regulations found in this document, and not reading this bulletin does not relieve your responsibility for following all procedures herein.

How do I . . .

- schedule an exam?
Computer-based testing: visit www.pearsonvue.com/icc or call Pearson VUE at 1-800-275-8301
Paper-and-pencil testing: visit www.iccsafe.org/inspector
- change my name or address?
Fax or mail ICC a letter containing your name, old and new addresses, contact phone number, **and signature**; ICC will advise if additional documentation is needed
- renew my certification?
Visit www.iccsafe.org/renewals to enter CEUs and complete the renewal process online
- request a wall certificate (new)?
Visit www.iccsafe.org/inspector for a request application
- request a duplicate wallet card or wall certificate?
Visit www.iccsafe.org/inspector for a request application
- review an exam I failed?
See page 14 for more information on the exam feedback and appeals process
- request special testing accommodations?
Computer-based testing: call Pearson VUE at 1-800-466-0450 and ask for special arrangements
Paper-and-pencil testing: call ICC at 1-888-422-7233 ext. 5227 to request an application
- make comments about an exam I took?
See page 14 for more information on the exam feedback and appeals process
- reschedule an exam?
Computer-based testing: call Pearson VUE at 1-800-275-8301 prior to your scheduled exam—see page 23 for deadlines
Paper-and-pencil testing: visit www.iccsafe.org/inspector for the Fee Schedule for Optional Services form to fax or mail to ICC prior to your exam
- cancel an exam?
Computer-based testing: call Pearson VUE at 1-800-275-8301 prior to your scheduled exam—see page 23 for deadlines
Paper-and-pencil testing: fax or mail a statement to ICC, including a signature, stating you wish to cancel your exam, and are aware of the administrative fee (see page 25 for more information)
- find my exam code (ID)?
See pages 27-55 for the exam outline listings in this bulletin
- know what I can take into the exam?
See page 18 for the Test Site Regulations section
- obtain the books for my exam?
Most references can be purchased at www.iccsafe.org/store; more information is found in the exam outline listings starting on page 27
- access my certification information on ICC's website?
Log into www.iccsafe.org with your email address and zip code currently on record with ICC—see page 14 for more details

Table of Contents

<i>About Code Council Certification</i>	5
<i>Code of Ethics</i>	5
<i>Steps to Achieving Code Council Certification</i>	6
<i>Certification Examination Timeline</i>	7
<i>Certification Categories</i>	8
<i>Administrative Rules and Procedures</i>	9
<i>Feedback and Appeals Process</i>	14
<i>Test Site Regulations</i>	18
<i>Computer-based Testing (CBT)</i>	21
<i>Paper-and-Pencil Testing</i>	25
<i>National Certification Examinations Based on 2009 International Codes</i>	27
<i>National Certification Examinations Based on 2012 International Codes</i>	27

PLEASE NOTE: ICC National Certification examinations are based on the first printing of the *International Codes*, unless otherwise noted.

International Code Council Vision

Protecting the health, safety, and welfare of people
by creating better buildings and safer communities.

International Code Council Mission

Providing the highest quality codes, standards, products, and services
for all concerned with the safety and performance of the built environment.

Information contained in this bulletin is deemed accurate as of the time of printing.

Contents are subject to change at any time.

For the most updated information, visit www.iccsafe.org/inspector.

COPYRIGHT © 2012

by

INTERNATIONAL CODE COUNCIL, INC.

ALL RIGHTS RESERVED. This International Code Council National Certification Examination Information Bulletin[®] is a copyrighted work owned by the International Code Council, Inc. Without advance permission from the copyright owner, no part of this book may be reproduced, distributed, or transmitted in any form or by any means, including, without limitation, electronic, optical, or mechanical means (by way of example and not limitation, photocopy or recording by or in an information storage retrieval system). For information on permission to copy material exceeding fair use, please contact: International Code Council, Publications, 4051 West Flossmoor Road, Country Club Hills, IL 60478. Phone: 1-888-ICC-SAFE (422-7233).

Trademarks: "International Code Council" and the "International Code Council" logo are trademarks of the International Code Council, Inc.

Note: Certification and examination requirements, including registration/scheduling, dates, locations, fees, and references are subject to change. Please make sure that you have the most current information before registering for/scheduling any examination. For up-to-date information on Code Council certification and examinations, go to www.iccsafe.org/inspector or call 1-888-ICC-SAFE (422-7233), ext. 5524.

About Code Council Certification

The Code Council certification program is the oldest, largest, and most prestigious credentialing program for construction code administration and enforcement professionals in the United States. Code Council certification examinations are maintained to the highest standards and include continuous review by committees of experienced professionals.

Becoming Code Council-certified is a significant personal and professional accomplishment, and is a key step toward enhanced professional stature. Code Council certificate holders demonstrate a confirmed commitment to protect the public health, safety, and welfare.

Many building departments and state agencies that regulate code enforcement personnel recognize Code Council certification. However, the Code Council cannot guarantee that a specific governmental agency will accept or recognize a Code Council certification. You should first contact the applicable agency regarding specific licensing and employment requirements.

Certification and examination information, including registration/scheduling requirements, dates, locations, fees, and references, are subject to change. **Candidates should make sure they have the most current information before registering for/scheduling a Code Council examination by going to www.iccsafe.org/inspector.**

Code of Ethics

It is the policy of the Board that each active certificate holder shall agree in writing to comply with the following Code of Ethics; and shall agree that failure to comply shall subject their certification to suspension or revocation by the Board:

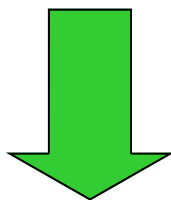
The protection of life, health, and property is a solemn responsibility of the highest order. Recognizing the public's trust bestowed upon individuals engaged in the administration and enforcement of building codes, the International Code Council advocates commitment to a standard of professional behavior that exemplifies the highest ideals and principles of ethical conduct. The governing concepts embodied in this philosophy are characterized herein below, for the benefit and guidance of those so engaged, and for the enlightenment of the public so served.

The Code Council-certified individual shall:

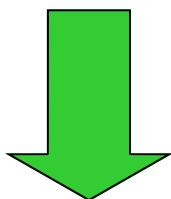
- *Place the public's welfare above all other interests and recognize that the chief function of government is to serve the best interest of all the people.*
- *Demonstrate integrity, honesty and fairness in all transactions and constantly strive for excellence in all matters of ethical conduct.*
- *Recognize the continuing need for developing improved safety.*
- *Maintain professional competence in all areas of employment responsibility and encourage the same for all associates at all levels.*
- *Accept no personal favors for public services rendered and conscientiously avoid all circumstances that could compromise professional integrity.*

Steps to Achieving Code Council Certification

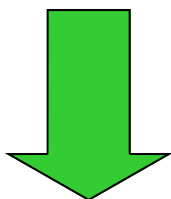
Read and understand the bulletin, which contains all of the information you'll need throughout the pre- and post-exam process



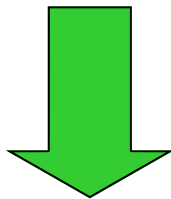
Determine which exam you want to take, and through which method (paper-and-pencil if available, or computer-based testing)



Follow the registration requirements beginning on page 21 for the method by which you choose to test



Obtain the approved references for the exam, and study these references well in advance of the exam

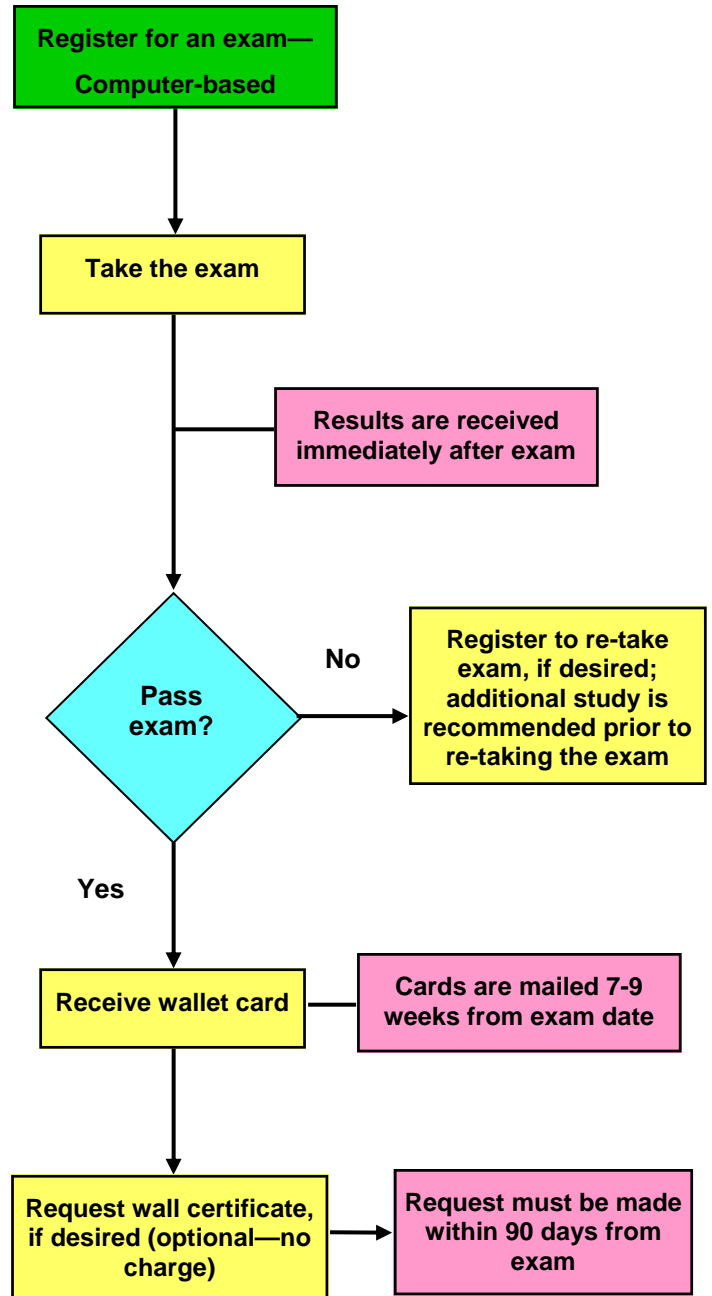
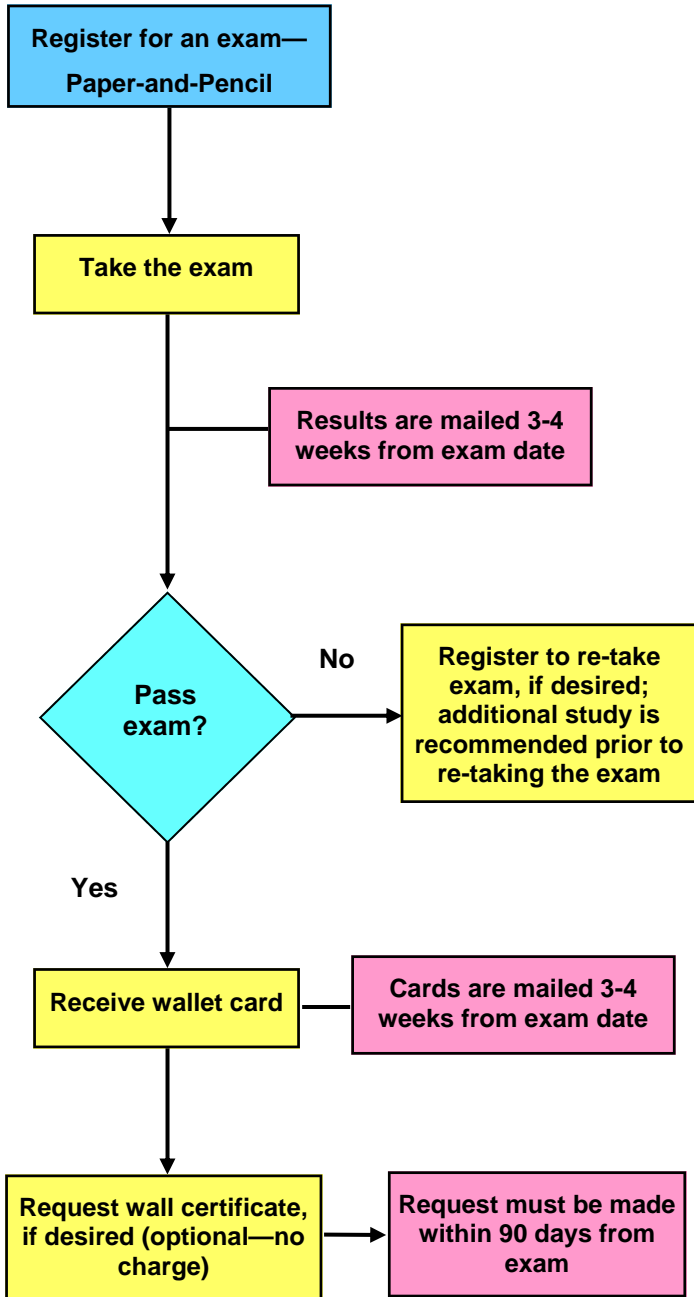


Pass the exam and meet any additional requirements, if applicable

Some certification categories may have additional requirements that include, but are not limited to, passing multiple examinations, education/work experience, submitting affidavits, and/or additional fees. Please be sure to thoroughly read the detailed information on those examinations you elect to take. For the most up-to-date requirements and detailed information on Code Council certification examinations, go to www.iccsafe.org/exams.

Certification Examination Timeline

The timeline below will give you a general idea of how long it will take to achieve certification in most categories. Please remember that your experience may be shorter or longer than that below, dependent on individual circumstances.



Certification Categories

Below are Code Council national certification categories currently available, required examinations, and corresponding exam IDs for 2009 *International Code*-based examinations; 2012 *International Code*-based examination information follows the 2009 listings, starting on page 43.

Exam	Certification/Examination	Page	Exam	Certification/Examination	Page
Residential Inspector			Fire Extinguisher Technician		
B1	Residential Building Inspector	27	FE	Certified Portable Fire Extinguisher Technician	36
E1	Residential Electrical Inspector	27	FK	Pre-engineered Kitchen Fire Extinguishing System Technician	36
M1	Residential Mechanical Inspector	28	FN	Pre-engineered Industrial Fire Extinguishing System Technician	36
P1	Residential Plumbing Inspector	28	Energy Conservation		
Commercial Inspector			77	Commercial Energy Inspector	37
B2	Commercial Building Inspector	28	78	Commercial Energy Plans Examiner	37
E2	Commercial Electrical Inspector	29	79	Residential Energy Inspector/Plans Examiner	37
M2	Commercial Mechanical Inspector	29	Green Building		
P2	Commercial Plumbing Inspector	29	G1	Green Building—Residential Examiner	37
General Plans Examiner			G2	IgCC Commercial Inspector	38
B3	Building Plans Examiner	30	G3	IgCC Commercial Inspector with ASHRAE 189.1	38
E3	Electrical Plans Examiner	30	G4	IgCC Plans Examiner	38
M3	Mechanical Plans Examiner	30	G5	IgCC Plans Examiner with ASHRAE 189.1	38
P3	Plumbing Plans Examiner	31	Certified Building Official (CBO) ***		
R3	Residential Plans Examiner	31	01	Legal/Management Module	39
RF	Residential Fire Sprinkler Inspector/Plans Examiner	31	02	Technology Module	39
Code Enforcement			Special Inspector		
14	Permit Technician	32	92	Prestressed Concrete Special Inspector ***	40
75	Zoning Inspector	32	84	Structural Masonry Special Inspector	40
64	Property Maintenance and Housing Inspector	32	86	Spray-applied Fireproofing Special Inspector	41
C1	Coastal and Floodplain Construction Inspector ***	33	S1	Structural Steel and Bolting Special Inspector	41
21	Accessibility Inspector/Plans Examiner	33	S2	Structural Welding Special Inspector ***	41
DR	Disaster Response Inspector ***	34	EC	Soils Special Inspector	42
FG	Fuel Gas Inspector	34	47	Reinforced Concrete Special Inspector ***	42
Fire					
66	Fire Inspector I	35			
67	Fire Inspector II ***	35			
F3	Fire Plans Examiner	35			
FM	Certified Fire Marshal (CFM) ***	35			

*** This examination has prerequisites or additional requirements to achieve certification. Please refer to the pages noted above for more information.

Administrative Rules and Procedures

How often can I take an exam?

During any three (3) year period and for any one certification category, you may take the exam a total of six (6) times, if necessary, to pass the exam. In any six (6) month period, you may take an exam up to two (2) times, if necessary, to pass. You will be responsible for payment of the exam fee for every exam you take.

Taking the examination in one category has no effect on testing for the six-month period for another category. For example, if you take the Residential Building Inspector examination and fail it, you would be allowed to take a Commercial Building Inspector or, for example, one of the Plumbing Inspector examinations, without regard to the six-month period for your Residential Building Inspector examination.

How is my exam scored?

What is a passing score? A passing score is the score set by the ICC and/or with the Exam Development Committee (EDC) as the minimum score needed to pass the exam. This score is technically called a scale score and is set as 75 for the National Certification exams.

How is a passing score set? A passing score is set as part of the process at the Exam Development Committee. This part of the process involves setting item-level cut-scores, using the expert judgment of the Subject Matter Experts (SMEs) who are at the EDC. These experts determine what the minimum is that the candidate needs to know in order to obtain the certificate, and a passing score. If you'd like to participate as an SME, visit www.iccsafe.org/certification and click on "Exam Development Committees."

What is a scale score? A scaled score transforms a raw test score (the number of test questions answered correctly) into other measurement units, called a scale score. However, please know that a scale score is not the number of questions answered correctly, nor the percentage of questions answered correctly.

Is the current test more or less difficult than prior tests, or future tests? There are multiple forms of the ICC examinations. While these forms were developed from the same set of content specifications, the levels of difficulty of the forms will vary because different exam questions appear on different forms. Some of these questions by their nature (and designated in the cut-score) are more difficult than others, even though they pertain to the same section of the exam. It would be unfair to require a candidate taking a collection (form) of somewhat more difficult questions to answer as many questions correctly as a candidate who took an easier form. So, we use a statistical procedure known as scaling to correct for differences in test form difficulty.

Think of it this way. Let's say an elementary school hired the ICC to create an exam to test for knowledge of aspects of mathematics. Further, let's say the exam was called "Addition and Subtraction," and the Exam Information Bulletin states it is a 100-item exam.

Look at the first ten questions of two different exam forms, both of which measure the concept of "Addition and Subtraction":

Question	Exam Form 1	Question	Exam Form 2
1.	$2 + 4 =$	1.	$6 + 9 =$
2.	$6 + 4 =$	2.	$16 + 26 =$
3.	$7 - 3 =$	3.	$18 - 16 =$
4.	$18 + 15 =$	4.	$23 + 99 =$
5.	$16 - 4 =$	5.	$86 - 44 =$
6.	$8 + 8 =$	6.	$5 + 1 =$
7.	$4 + 9 =$	7.	$29 + 88 =$
8.	$20 - 17 =$	8.	$74 - 67 =$
9.	$4 + 15 =$	9.	$48 + 96 =$
10.	$7 - 4 =$	10.	$55 + 38 =$

As you can see, the questions on Form 2 are a bit harder than the questions on Form 1. If these were both 100-item exam forms with such a continuing mix of items, it would be unfair to require the students who were administered Exam Form 2 to answer the same number of questions correctly in order to pass.

Why scale the scores? If we simply reported the total number of questions answered correctly (the raw score), there would be a different passing score for each form of the test (because of those differences in difficulty). This would be confusing to candidates. So, we convert these raw scores to a constant scale such that, say, the designated 75 continues as the minimum score required to pass regardless of the form administered, knowing the number of correct answers needed to pass varies from form to form and from year to year.

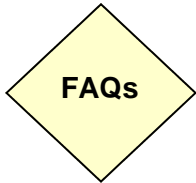
What is reported? Scaled scores of 75 or above are reported as PASS. The ICC does not report the numeric score; the score report simply indicates a passing score by saying PASS. Those who fail the exam are provided the numeric scaled score, along with diagnostic information of their performance on major content areas. This information is for self-evaluation only.

How might exam scores be cancelled?

On rare occasions, circumstances may render examination scores invalid. The Code Council reserves the right to cancel or withhold any examination scores if, in its sole opinion, there is adequate reason to question their validity. Reasons are:

1. Doubts may be raised about the validity of examinees' scores because of suspected misconduct, including but not limited to, giving or receiving help; using unauthorized notes, books, or papers; removing examination materials or notes from the examination room; attempting to take an examination for someone else; or inappropriately taking more than two CBT examinations within a single six-month period. In such circumstances, examinees will be expected to cooperate in an investigation of their scores. Such examinees will be notified of procedures developed by the Code Council to ensure fairness.

2. Some scores may be rendered invalid because of circumstances beyond the examinee's control, such as faulty examination materials or mistiming. These situations will be investigated; when such occurrences result in cancellation of an examinee's scores, the Code Council will arrange for a makeup examination for the examinees concerned.
3. The Code Council has implemented procedures to minimize the potential of negative conditions at the examination site such as bad lighting, excessive noise, or uncomfortable temperature conditions. In unlikely cases where such conditions may occur, the required passing score is not modified or changed. If a candidate finds unfavorable conditions at the examination site, we recommend the candidate immediately notify the proctor.



Does the Code Council require a candidate to have a certain level of experience or education before taking an examination?

No. Most Code Council examinations are open to all individuals with no prerequisite for experience or education. Code Council certification should be used as one of several measures of an individual's qualifications when screening applicants for a position. Inspectors should possess the right mix of technical knowledge, education, and related experience. Because proper weighting of the relative importance of these three qualifications is a subjective decision, determining the emphasis of Code Council certification is most appropriately performed at the local level by the building official. For this reason, the Code Council does not specify education or experience requirements for certification applicants for most categories. However, the Reinforced Concrete Special Inspector has additional requirements after passing the certification exam.

Which exam(s) should I take?

As requirements for employment differ from jurisdiction to jurisdiction, the Code Council cannot recommend specific certifications to you. We strongly encourage you to contact the jurisdiction in which you wish to work for more information on their specific needs, and couple this information with the exam-specific listings in this bulletin.

Is a Code Council certification the same as a license?

A license is a permit to work in a particular occupation, issued as a result of state or local legislation. Code Council certifications are voluntary certifications. Many jurisdictions require Code Council certification in their administrative regulations. Check with your state or local agency to find out if your state recognizes Code Council certifications.

What is the best way to prepare for an examination?

The best way to prepare for an examination is through the study of codes and standards. Code Council seminars, self-study workbooks, code commentaries, and textbooks may be helpful. Practice examinations for many categories are available for a fee from the Code Council at www.icccampus.org.

These may be useful to those candidates who need to refresh their skills in taking exams. It is important to realize, though, that the difficulty level of the practice exams may not represent that of the actual Certification exam.

Sample questions are available for most exams at www.iccsafe.org/exams; these items are similar to those used on the exams, but will never appear on any exam form. However, nothing can substitute for studying the code and on-the-job experience of code use and application. You must devote the time needed to understand the code and master the ability to apply it.

When can I test?

Computer-testing is administered frequently at over 250 sites across the nation. Paper-and-pencil examinations are administered on a limited basis. To get the most updated information, go to www.iccsafe.org/exams.

How often can I test?

There is no mandatory waiting period before retaking a failed exam. However, it is strongly recommended that you allow time to study the approved references before registering to test a second time.

When will I receive my results?

Electronic exams:

Results for examinations taken electronically are available immediately after completion of the examination.

For most certification categories, candidates will automatically receive a Code Council wallet card within seven to nine weeks after they pass the examination. Some categories have additional requirements prior to receiving the full certification. Wall certificates are available upon request.

Paper-and-pencil exams:

Results for examinations taken by paper-and-pencil are mailed within three to four weeks of the exam date. Pass results also will be posted to the Code Council website in approximately the same time frame.

I didn't receive my pass letter or wallet card. Can I have another mailed to me?

Yes, but the item must be requested within 90 days from the date of the passed examination to have another mailed without a fee. If a resend of a pass letter or wallet card is requested after 90 days from the exam, a fee will be charged. For fees and other optional services, go to www.iccsafe.org/inspector.

What type of question format will be included in the examination?

Test questions are in four-option, multiple-choice format, with one answer on each question scored as correct. Due to the rigorous psychometric processes used by the Code Council in exam development, questions do not follow patterns (e.g., "the most common answer is 'B'").

Are the examinations open book?

Yes, most exams are open book. To get the most updated information on examinations, go to www.iccsafe.org/exams.

Can't I just look up all of the answers in the books?

Because of the time constraints, you will not have time to look up all of the answers. For those answers you must look up, you must be VERY familiar with the references to avoid wasting time searching for information. First impressions are often the most accurate, but you may change your answers if time allows.

How long are the examinations?

The length and allowed time varies depending upon the subject matter. To get the most updated information on examinations, go to www.iccsafe.org/exams.

How many examinations can I take at one administration?

For computer-based exams, in most cases you may take two exams in one day, as long as each examination is only two hours in length. For paper-and-pencil exams, you may schedule two exams at one administration, but multiple exams must be scheduled for different starting times (i.e., 8:00 and 10:30).

Should I guess if I don't know the answer to a question?

There is no guessing penalty, so it is to your advantage to answer every question. Remember to base your answers on the listed references for each exam, not solely on long-time field practices.

How do I renew my certification?

In most cases, you will need to have a certain number of continuing education credits (CEUs) to renew your certification. For more information on keeping your certification current, go to www.iccsafe.org/renewals.

If I pass one CBO examination but fail the other, do I need to retake both exams?

A candidate who passes one exam has three years to pass the other without retaking the passed exam. After three years, the candidate would need to retake and pass both examinations.

Can I use my VA Montgomery Bill benefits to pay the fees for taking the examinations?

Many Code Council exams have been approved for VA reimbursement. To obtain more information on educational benefits for veterans, call 1-888-GIBILL1 (442-4551).

How can I access my certification information on the ICC website?

Log into www.iccsafe.org with your email address on record with ICC; your zip code on record is your password. Click on “My ICC” and then “My Certifications” on the navigation bar. Do not create a new account on the renewal site, as this new account will not link you to your existing information.

When are exams updated to the newest codes?

Examinations are updated to the latest edition of the *International Codes*[®] effective January 1 of the year following the date of publication to allow time for candidates to become familiar with the new code provisions.

Who can see my candidate records?

All Code Council certification examination candidates have certain rights in relation to their educational records. To view the complete Certification Records Policy, visit the Code Council website at www.iccsafe.org/inspector.

Feedback and Appeals Process

ICC has developed a three-step process for test-takers to comment on or challenge the results of their exam. These are:

- 1) ICC Certification & Testing staff review,
- 2) appeal to Exam Development Committee, and
- 3) appeal to the Board for International Professional Standards.

The form for providing feedback and starting the appeals process is available at the conclusion of your exam at Pearson VUE (if testing via computer) or on the ICC website at www.iccsafe.org/inspector.

If you re-take a failed exam on which you have submitted an appeal, you will forfeit your appeal opportunity for that exam.

Step 1: ICC Certification & Testing Staff Review

- Why:** To have ICC Certification & Testing staff review comments or challenges on specific exams or exam items
- How:** You must submit a Comment / Challenge form to ICC with your original signature (form available at www.iccsafe.org/inspector or upon request after your exam at a Pearson VUE test site); this form must contain a separate and complete statement of each item upon which your comments are based, and must be mailed to the following address:
- International Code Council
Candidate Services Coordinator
900 Montclair Road
Birmingham, AL 35213
- Fee:** None (\$0)
- Deadline:** You must submit the above form to ICC within 90 days following your exam date
- Response:** You will be mailed a response from ICC staff within 15 business days from receipt of the form by ICC; a request for staff review is based solely upon the most recent examination taken

Step 1 must be completed prior to Step 2.

Step 2: Appeal to Exam Development Committee (EDC)

- Why:** To appeal the results of the ICC Certification & Testing staff review to the EDC; you can read more about the EDC and their function at www.iccsafe.org/Membership/Pages/ExamDevelopmentCommittees.aspx
- How:** You must submit your request in writing to ICC, at the following address:
- International Code Council
Candidate Services Coordinator
900 Montclair Road
Birmingham, AL 35213
- Fee:** None (\$0)
- Deadline:** You must submit your written request within 30 days of the date of the ICC staff denial letter
- Response:** A response will be provided to you in writing after the next available EDC meeting, which can take as long as 120 days; an appeal to EDC is based solely upon the most recent examination taken

Step 2 must be completed prior to Step 3.

Step 3: Appeal to the Board for International Professional Standards (BIPS)

BIPS serves as the oversight advisory board to the exam development committees; you can read more about BIPS and their function at www.iccsafe.org/accreditation/BIPS

Why: To provide you a final level of appeal

How: You must submit your request in writing to ICC, at the following address:

International Code Council
Candidate Services Coordinator
900 Montclair Road
Birmingham, AL 35213

The hearing will be held from 60 days to 6 months from your request, dependent on availability of BIPS members; you will receive a minimum 30 days written notice as to date, time, and place of hearing, and you can participate in person, at your expense, or at no charge via teleconference; you will have an opportunity to present documentary or oral evidence, or to provide witnesses in support of the appeal, by participating in the BIPS hearing

Fee: None (\$0)

Deadline: You must submit your written request within 30 days of the EDC challenge denial letter date

Response: You will be mailed results of the hearing within 15 days of the date of the hearing

Important: **BIPS is the final level of appeals**

Optional Services

Optional: Hand Score

Why: To verify the accuracy of the candidate's reported score; please be aware that ICC and Pearson VUE follow very careful scoring procedures to ensure accuracy prior to issuance of score reports

How: You must complete the Hand Score Request form (at www.iccsafe.org/inspector) and submit this form with original signature and copy of your score report to ICC

Fee: \$25.00

Deadline: You must request a hand score within 90 days from your exam

Response: You will be mailed the results of the hand score within 15 days from receipt of your request

Impact: Please know that it is very rare that a score will be changed based on a hand score, as the automated scoring systems are very accurate; a request for hand score is based solely upon the most recent examination taken

Optional: Review Session **

Why:	To review missed test questions; you must be within ten (10) points of passing score. This is not an opportunity to change answers, ask questions, or see the correct answers, but only to review those items scored as incorrect, along with the answers you marked, for use in completing a formal challenge if you wish. A review session is based solely upon the most recent examination taken.
How:	You must submit the request form available at www.iccsafe.org/inspector , along with fee
Fee:	\$75.00—NOTE: you do not need to complete a review session to challenge your exam
When:	You must schedule your review session within 90 days from your exam
Response:	You will not receive a response based solely on the review session; instead, you will be provided a response to any items on which you complete a challenge form during your review session

**** Review Sessions**

Reviews are completed at a paper-and-pencil testing location via paper-and-pencil. Due to the limited number of paper-and-pencil test sites around the country, it may take several months to secure a site for your review session. Review sessions are generally scheduled for the four annual National Certification examination dates and sites. The available testing sites and dates are located on the paper-pencil exam application found at www.iccsafe.org/inspector.

Review sessions are limited to one half of the original examination time. For a two-part examination, reviews are limited to one half of the original time for the portion of the examination which was failed. Candidates may bring in any of the texts listed in the Examination Information Bulletin as required references for the examination.

Candidates must submit this form with applicable fee and a copy of the score report received. An original signature on this form is required.

Submit completed forms, fees, etc. to:

International Code Council
ATTN: Candidate Services Coordinator
900 Montclair Road
Birmingham, AL 35213

(888) 422-7233, ext. 5227 (toll-free)
(205) 599-9884 (facsimile)

Test Site Regulations

To ensure the security of examination materials, reliable test results, and public confidence in the integrity of certified professionals, the rules and procedures below are strictly enforced at all Code Council examinations.

What should I bring to the test site?

For electronic examinations, examinees must provide their testing confirmation number (that was provided by the Pearson VUE representative at the time of exam registration) at the testing site on the exam day in order to be admitted to take the exam.

For paper-and-pencil or electronic examinations, examinees must possess and present a valid (unexpired) photo ID with signature, issued by a state or federal regulatory agency, e.g., a driver's license, passport, etc.

For electronic examinations, **the name on the exam reservation must match the name on the ID provided. If it does not, you will not be allowed to test, and will forfeit your exam fee. Neither ICC nor Pearson VUE can make an exception to this policy.** If you are unable to present identification as required by the ICC and Pearson VUE, or have questions about what will be allowed, you must call Pearson VUE prior to your scheduled exam to make other arrangements.

Examinees may bring the following items to the examination:

1. Three No. 2 pencils (sharpened) [PAPER-AND-PENCIL TESTING ONLY]
2. Reference(s) as listed in this Examination Information Bulletin for the applicable exam—**no other reference material will be allowed into the testing center:**
 - Bound (original bound book, three-ring binder, or stapled)
 - Notes written in ink or highlighted in code sections
 - Permanently attached tabs (tabs that can't be removed without destroying the page)
 - Pencil notes in your references that are highlighted prior to arrival at the test center
 - **Photocopies of copyrighted materials are not allowed**
3. Eraser [PAPER-AND-PENCIL TESTING ONLY]
4. Magnifying glass
5. Eyeglasses, if necessary
6. Architects' scale or rule
7. Watch **without** alarm/camera [PAPER-AND-PENCIL TESTING ONLY]
8. Battery-operated calculator:
 - Nonprogrammable
 - Not capable of storing examination information
 - No ribbon or paper printing capabilities
9. Foreign language/English translation dictionaries, if needed

What should I leave home?

1. Any kind of ink (ballpoint, felt-tip, gel, etc.) pens, colored pencils, highlighters, writing paper, or briefcases
2. Personal items such as purses, wallets, or watches—lockers are available at Pearson VUE for small items, but will not accommodate laptops, briefcases, or large purses or bags
3. Calculators with print capability and/or that store formulas

4. Copying, recording, or photo devices
5. Cell phones, beepers, radios, MP3 players, and/or PDAs

What are proctors, and what do they do?

The proctors are responsible for administering the examination and ensuring security of the exam materials at the test site. Proctors are well-trained and will treat candidates with respect, and in turn, will expect the same level of respect from candidates. Threatening a proctor or interfering with the administration of an examination at *any* time may be considered a criminal offense and punishable by law. Proctors cannot discuss contents of the exam or reference materials with a candidate.

Proctors have the right to remove a candidate's test and require the individual to leave the building if the candidate:

1. Gives or receives help during the examination;
2. Attempts to remove exam materials or notes from the room;
3. Creates a disturbance;
4. Copies or attempts to copy examination questions or answers; or
5. Is found to have prohibited materials (cell phone, recorder, etc.) during the exam.

If a candidate is dismissed from an examination for an infraction of the policies presented in this booklet, the candidate will not be entitled to a refund, may jeopardize his or her right to take a Code Council examination in the future, and may face possible prosecution.

What does ICC expect of me?

Examinees are responsible for arriving at the exam site on the proper date, at the proper time, and with proper identification. You should determine in advance the exact location of the test site, how to get there, and how much time it will take you to get to the site. Examinations will be given only on the date and time scheduled.

Examinees are responsible for arriving at the test site with required reference(s), if desired, for use during the exam. Required examination references are listed with the individual examination outlines found in this bulletin. References for examinations are not supplied by the Code Council or the testing center.

Examinees must know, understand, and adhere to all of the regulations governing Code Council examinations as listed in this bulletin.

Examinees should arrive at the exam site at least 30 minutes before the examination is scheduled to begin. Remember, it is your responsibility to already be familiar with the regulations governing Code Council examinations.

What can I expect at the test site?

The Code Council proctor will check your identification, have you sign in, and may assign you a seat. The examination proctor will explain the procedures for taking the examination; answer questions related to taking the exam and provide notification to begin the examination.

Before the Exam

Metal detectors may be randomly used to search examinees entering and/or leaving the exam room. You will be asked to empty all of your pockets and place personal items in a locker. Proctors may inspect all materials an examinee carries into and from the exam room. If your reference materials do not meet test site regulations (relating to tabs, pencil notes, etc.), **you will not be allowed to take these references into the exam room.** You will still be allowed to test, but without these materials.

The Code Council randomly videotapes examination sessions.

You are not allowed to write or mark in or on your reference books during the examination.

While the examination is being administered, you are not allowed to leave the building and return to the exam room. If you wish to leave the exam room for any reason, you must receive permission from the proctor and turn in all of your examination materials and references to the proctor. Only one examinee at a time is allowed outside the exam room, and you are not allowed additional test time for time spent outside the exam room.

During the Exam

You are not allowed to communicate, verbally or nonverbally, with other candidates during the examination, and you may not share references.

It is **highly recommended** that if you are taking a computer-based exam, especially for the first time, you complete the tutorial available to you at the beginning of your exam. The time spent on the tutorial does not count against your exam time. You will receive important information about how to keep track of your time remaining, how to mark items for review, where to find the number of the question you are on, and more.

For electronically administered examinations, there is an optional clock on the computer that counts down to display the time remaining. (Information on turning on the clock is available in the tutorial prior to the exam.) When the time limit is up for the examination, the computer will end the test.

After the Exam

If you pass your examination, you cannot retake the examination you passed. If you do not pass your examination and wish to comment on your experience, please see the section of this bulletin titled "Feedback and Appeals Process."

Computer-based Testing

How do I register for a computer-based exam?

Computer-based certification examinations are administered for the Code Council by Pearson VUE (formerly Promissor), a professional test administration company. **To register to take a Code Council computer-based certification exam, call Pearson VUE at 1-800-275-8301 (only for non-DBPR candidates), or visit Pearson VUE's website at www.pearsonvue.com/icc. You must provide the EXAM ID and EXAM TITLE, whether registering online or by telephone.**

Online reservations are available 24 hours a day, 7 days a week. The Code Council encourages candidates to register online, for your convenience. You must provide an email address to schedule an exam online, and Pearson VUE will email you a confirmation letter containing the date and time of your exam, along with test day instructions. **It is your responsibility to check this confirmation letter to ensure the exam listed is the one you wish to take.**

Pearson VUE's customer care reservations and customer service lines are open Monday through Friday from 8:00 a.m. to 11:00 p.m. (Eastern Time), Saturday from 8:00 a.m. to 5:00 p.m., and Sunday from 10:00 a.m. to 4:00 p.m. When you call to make your examination reservation, a representative will help you select the optimal test date and location for your schedule, provide instructions and directions, and give your examination reporting time. Walk-in testing is not available.

You may make an exam reservation up to one business day prior to your desired exam date, depending on space availability at the test center.

You must have the following information available at the time you are registering for a Code Council computer-based certification examination:

1. Exam ID and title. Exam IDs and titles can be found in this bulletin
2. Your full name, address, and home and work telephone numbers
3. Selected examination date and location of the area you desire to take the exam
4. Your score report, if you are retaking the examination (only for those candidates who originally tested through Pearson VUE)
5. Your credit card or payment information

Where are the test sites?

To locate test sites in your area, visit the Pearson VUE website at www.pearsonvue.com/icc for an updated listing of sites. Be aware that test sites are subject to change.

How do I pay for my exam?

Examination fees must be paid by credit card, debit card (issued through VISA or MasterCard) or electronic check at the time a reservation is made, NOT at the test center. Candidates who do not have or do not wish to use a credit card, debit card, or personal checking account may choose to prepay their examination fees using a voucher. Vouchers can be purchased online at www.pearsonvue.com/vouchers/pricelist/iccert.asp by credit card, either singly or in volume. To redeem a voucher as payment when scheduling a test, simply indicate “voucher” as the payment method and provide the voucher number. **All vouchers are pre-paid, non-refundable, and non-returnable.** Vouchers expire twelve (12) months from the date they are issued, and voucher expiration dates cannot be extended. The exam must be taken by the expiration date printed on the voucher.

Do I have to be a computer whiz?

Examinations are administered on a personal computer (PC). Candidates are not required to have any computer knowledge to take the examination on the PC. Before you begin your test, you may take up to 15 minutes to practice with the sample questions. Timing of the examination does not begin until you look at the first question of the actual examination. You will be allowed to change your answers, mark answers for review, go back to skipped questions and, time permitting, review your test.

When are exams available?

Code Council certification examinations are administered nationally, Tuesday through Saturday (exceptions noted below). Testing sessions are generally held at 8:00 a.m. and 1:00 p.m. Some test centers are open daily, while others are open on specific days of the week. In some locations, exams are administered on a monthly basis. Pearson VUE offices are closed in observance of the following holidays in 2012:

- New Year's Day
- Martin Luther King, Jr. Day
- Memorial Day
- Independence Day
- Labor Day
- Thanksgiving (including Friday following holiday)
- Christmas Eve and Christmas day

What if the weather's bad?

Test administrations will be delayed or canceled only in emergencies. If severe weather or a natural disaster makes the test center inaccessible or unsafe, the test administration may be canceled. Call Pearson VUE at 1-800-274-2615 to check weather or other emergency delays.

How do I cancel or reschedule my test?

To change or cancel your reservation without monetary penalty, you must notify Pearson VUE two business days before your scheduled examination. When this is done, the fee from your first appointment will be applied to your new test date. If you call Pearson VUE less than two business days before your scheduled examination, you will be charged the full examination fee. The fee from your first appointment will be owed in addition to the fee for the new test date.

What if I can't make it to my test?

There are no refunds for examinations not taken. All candidates seeking excused absences must submit written verification and supporting documentation of the situation to Pearson VUE within 14 days of the original examination date. Illness excuses must be written by the attending physician. Inclement weather is not acceptable as an excused absence. If, on the day you are scheduled to test, you are unable to attend the examination for which you were scheduled, you may be excused without monetary penalty for the following reasons:

1. Documented illness, either yourself or immediate family member;
2. Death in the immediate family;
3. Disabling traffic accident;
4. Court appearance or jury duty; or
5. Military duty.

Written verification and supporting documentation for excused absences must be submitted to the Pearson VUE Program Coordinator via fax or mail within fourteen (14) days of the original examination date.

Pearson VUE
c/o Candidate Services
P.O. Box 8588
Philadelphia, PA 19101
Fax: 888-204-6291

If you are absent from an examination that you were scheduled to attend, and you did not reschedule or cancel according to the policy, you will owe Pearson VUE the full examination fee for that missed examination.

When do I get my test results?

After completing the test, candidates will raise their hands and the assessment center manager will retrieve the unit for immediate scoring. Failing candidates will be provided with diagnostic information on their performance on major content areas of each examination taken. This information is not used to determine whether a candidate passes or fails; it is for self-evaluation only. Candidates who pass will be notified with the word "PASS." Refer to Examination Scoring on page 9.



What if I have special needs?

Pearson VUE certifies that it shall comply with the provisions of the Americans with Disabilities Act (ADA). If you need special arrangements for testing, please call 1-800-466-0450 to request special testing services. This telephone number is available for reservations Monday through Friday, 7:00 a.m. to 6:00 p.m. CST. All examination sites have access for candidates with disabilities.

Pearson VUE will provide auxiliary aids and services, except where it may fundamentally alter the examination or results. It is recommended that you submit a written request for special test arrangements and services approximately two to three weeks in advance of your desired test date. In addition, candidates should indicate when registering for re-examination that special arrangements were made or services used for the prior test administration, and that these services will be needed again for the upcoming test date. Supporting documentation can be faxed to 610-617-9397.

Pearson VUE is equipped with TDD (Telecommunications Devices for the Deaf) to assist deaf and hearing-impaired candidates. TDD calling is available during standard business hours through a special Pearson VUE toll-free number, 1-800-274-2617. This phone number is for express use by candidates with compatible TDD equipment.

Pearson VUE will determine the time and place of specially arranged examinations and confirm these arrangements with the candidate directly. In some cases, there may be an additional fee for special arrangements.

In the event that an examination is offered only on Saturdays, candidates who cannot take the examination for religious reasons may request a non-Saturday test administration. Such a request must be put in writing on official stationery by your religious advisor and sent via fax machine, or mailed to Pearson VUE. Non-Saturday testing for this circumstance is done only on a prearranged basis.

Paper-and-Pencil Testing

How do I register for a paper-and-pencil exam?

A registration application is required to be completed and forwarded to the Code Council with pre-payment. The application can be found on our website at www.iccsafe.org/inspector. Alternately, candidates can register online at www.iccsafe.org/exams.

Approximately 2 weeks prior to the examination date, the Code Council will send a confirmation letter stating the examination(s) for which the candidate is registered, examination date, reporting time(s), and examination center address. **It is your responsibility to check this confirmation letter to ensure the exam listed is the one you wish to take.**

What if I need to cancel or transfer my exam?

A candidate will be refunded 80 percent of the written examination registration fee when cancellation is made at least 14 days prior to the scheduled examination date. If cancellation is made less than 14 days before the scheduled examination date, 50 percent of the registration fee is refunded.

Cancellations must be in writing (via fax or U.S. mail) with the candidate's signature. The exam date, type, and location must be listed on the cancellation request.

Candidates also have a one-time-only option to transfer their paid registration to the next scheduled examination administration date with a \$50 administrative fee. Transfers must be requested in writing and received at the Code Council no later than the day prior to your scheduled exam date.

If a candidate does not appear on his or her scheduled examination date, no refund is made, and the option to transfer registration to the next scheduled examination administration will require written request within 7 days of the examination date. The following reasons will be accepted:

1. Documented illness, either yourself or immediate family member;
2. Death in the immediate family;
3. Disabling traffic accident;
4. Court appearance or jury duty; or
5. Military duty.

What if I have special needs?

If you have a disability that prohibits you from taking the examination under standard conditions, you may request special arrangements. Your request must accompany your registration form. In addition to the letter of request, a special accommodations form must be submitted. This form may be obtained by contacting the Candidate Services Coordinator. Please contact the department for instructions concerning the required information before you submit your application. Completed accommodations

forms must be submitted and approved by the examination department a minimum of three months prior to the requested examination administration date.

What can I expect during the exam?

Each candidate will be given a packet containing an examination booklet, plans (if appropriate), an answer sheet, and a sheet for calculations. You will not need additional scratch paper. All of this material must be enclosed in the return envelope along with the original envelope and confirmed by the proctor.

Any comments pertinent to the examination or site should be recorded by you on a comment sheet available from the proctor, and mailed to ICC. Under no circumstances are examination materials to be taken from the room.

When do I get my exam results?

All examinees are notified by mail of their examination results from three to four weeks after the examination date. Candidate results are not available by telephone. Information is also posted on the Internet at www.iccsafe.org/inspector in approximately the same time frame as the mailing of results.

National Certification Examinations Based on 2009 International Codes

Please visit www.iccsafe.org/exams for expanded content outlines and the most up-to-date information. Outlines are subject to change.

Exam fees are listed for paper-and-pencil (P&P) method, if available, and computer-based testing (CBT).

IMPORTANT NOTES:

ICC will offer paper-and-pencil exams based on the 2006, 2009, and 2012 International Codes through 2012.

The 2006 code-based exams will be available via paper-and-pencil testing only.

The 2009 code-based exams will be available via paper-and-pencil or computer-based testing through at least June 2012, with exceptions noted in this bulletin.

The 2012 code-based exams will be available via paper-and-pencil testing through June 2012, with exceptions noted in this bulletin, and via computer-based testing in July. Visit www.iccsafe.org/inspector for updated details on availability.

Residential Inspector Examinations

B1 Residential Building Inspector

60 multiple-choice questions
Exam fee: \$110 (P&P); \$160 (CBT)
Open book—2-hour time limit

Content Area	% of Total	Reference
Code Administration	4%	2009 <i>International Residential Code</i> ®
Building Planning	8%	
Footings and Foundations	16%	
Floor Construction	14%	
Wall Construction and Coverings	27%	
Roof/Ceiling Construction and Penetrations	14%	
Public Safety	17%	
Total	100%	

E1 Residential Electrical Inspector

60 multiple-choice questions
Exam fee: \$110 (P&P)
Open book—2-hour time limit

Content Area	% of Total	References
General Requirements	10%	2009 <i>International Residential Code</i> ® 2008 <i>National Electrical Code</i> (optional secondary reference)
Services	17%	
Branch Circuit and Feeder Requirements	28%	
Wiring Methods and Power and Lighting Distribution	21%	
Devices, Lighting Fixtures, and Appliances	19%	
Swimming Pools and Similar Installations	5%	
Total	100%	

Residential Inspector Examinations (continued)

M1 Residential Mechanical Inspector 60 multiple-choice questions
Exam fee: \$110 (P&P); \$160 (CBT)
Open book—2-hour time limit

Content Area	% of Total	Reference
General Administration	10%	2009 <i>International Residential Code</i> ®
Heating and Cooling Equipment and Water Heaters	21%	
Exhaust Systems	9%	
Duct Systems	8%	
Combustion Air	19%	
Chimneys and Vents	18%	
Fuel Supply Systems	15%	
Total	100%	

P1 Residential Plumbing Inspector 60 multiple-choice questions
Exam fee: \$110 (P&P); \$160 (CBT)
Open book—2-hour time limit

Content Area	% of Total	Reference
General Requirements	14%	2009 <i>International Residential Code</i> ®
Fixtures	8%	
Water Heaters	12%	
Water Supply and Distribution	21%	
Sanitary Drainage	23%	
Vents	22%	
Total	100%	

Commercial Inspector Examinations

B2 Commercial Building Inspector 80 multiple-choice questions
Exam fee: \$180 (P&P); \$180 (CBT)
Open book—3-1/2-hour time limit

Content Area	% of Total	References
General Administration	6%	2009 <i>International Building Code</i> ®
Building Planning	20%	ACI 318-08 <i>Building Code Requirements for Structural</i>
Footings and Foundations	8%	<i>Concrete and Commentary</i> OR
Floor Construction	8%	ICC <i>Concrete Manual</i> ® (2006 or 2009 edition)
Wall Construction and Coverings	21%	
Roof/Ceiling Construction	6%	
Public Safety and Special Construction	31%	
Total	100%	

Commercial Inspector Examinations (continued)

E2 Commercial Electrical Inspector		80 multiple-choice questions Exam fee: \$180 (P&P) Open book—3-1/2-hour time limit
Content Area	% of Total	Reference
General Requirements	10%	2008 <i>National Electrical Code</i>
Services	17%	
Branch Circuit and Feeder Requirements	19%	
Wiring Methods and Distribution Systems	19%	
General Use Equipment	12%	
Special Occupancies	9%	
Special Equipment	7%	
Special Systems	7%	
Total	100%	

M2 Commercial Mechanical Inspector		50 multiple-choice questions Exam fee: \$180 (P&P); \$180 (CBT) Open book—2-hour time limit
Content Area	% of Total	References
General Administration	15%	2009 <i>International Mechanical Code</i> ®
Heating and Cooling and Water Heaters	15%	2009 <i>International Fuel Gas Code</i> ®
Exhaust and Ventilation Systems	20%	
Duct Systems	12%	
Combustion Air	14%	
Chimneys and Vents	14%	
Fuel Supply Systems	10%	
Total	100%	

P2 Commercial Plumbing Inspector		50 multiple-choice questions Exam fee: \$180 (P&P); \$180 (CBT) Open book—2-hour time limit
Content Area	% of Total	References
General Requirements	10%	2009 <i>International Plumbing Code</i> ®
Fixtures	12%	2009 <i>International Fuel Gas Code</i> ®
Water Heaters	14%	ICC/ANSI 117.1-2003 <i>Standard on Accessible and Usable Buildings and Facilities</i> ®
Water Supply and Distribution	14%	
Sanitary Drainage	16%	
Vents	12%	
Traps, Interceptors, Separators, Special Piping, and Storage Systems	10%	
Storm Drainage	6%	
Health Care Plumbing	6%	
Total	100%	

General Plans Examiner Examinations

B3 Building Plans Examiner 80 multiple-choice questions
Exam fee: \$180 (P&P); \$180 (CBT)
Open book—3-1/2-hour time limit

Content Area	% of Total	References
General Administration	5%	2009 <i>International Building Code</i> ®
Building Planning	21%	ACI 318-08 <i>Building Code Requirements for Structural</i>
Footings and Foundations	8%	<i>Concrete and Commentary</i> OR
Floor Construction	4%	ICC <i>Concrete Manual</i> ® (2006 or 2009 edition)
Wall Construction and Coverings	12%	
Roof/Ceiling Construction	4%	
Public Safety and Special Construction	46%	
Total	100%	

E3 Electrical Plans Examiner 70 multiple-choice questions
Exam fee: \$180 (P&P)
Open book—3-1/2-hour time limit

Content Area	% of Total	References
General Administration	2%	2009 <i>International Building Code</i> ®, chapters 7 & 10
Services	24%	2008 <i>National Electrical Code</i>
Branch Circuit and Feeder Requirements	19%	
Wiring Methods and Distribution Systems	11%	
Equipment for General Use	15%	
Special Occupancies	16%	
Special Equipment	7%	
Special Systems	6%	
Total	100%	

M3 Mechanical Plans Examiner 50 multiple-choice questions
Exam fee: \$180 (P&P); \$180 (CBT)
Open book—2-hour time limit

Content Area	% of Total	References
General Administration	5%	2009 <i>International Mechanical Code</i> ®
Appliances and Equipment	15%	2009 <i>International Fuel Gas Code</i> ®
Exhaust and Ventilation Systems	25%	
Duct Systems	8%	
Combustion Air	21%	
Chimneys and Vents	17%	
Fuel Supply Systems	9%	
Total	100%	

Please visit www.iccsafe.org/exams for expanded content outlines and the most up-to-date information. Outlines are subject to change.
Exam fees are listed for paper-and-pencil (P&P) method, if available, and computer-based testing (CBT).

General Plans Examiner Examinations (continued)

P3 Plumbing Plans Examiner		50 multiple-choice questions Exam fee: \$180 (P&P); \$180 (CBT) Open book—2-hour time limit
Content Area	% of Total	References
General Requirements	6%	2009 <i>International Plumbing Code</i> ®
Fixtures	12%	2009 <i>International Fuel Gas Code</i> ®
Water Heaters	14%	ICC/ANSI 117.1-2003 <i>Standard on Accessible and Usable Buildings and Facilities</i> ®
Water Supply and Distribution	16%	
Sanitary Drainage	14%	
Vents	14%	
Traps, Interceptors, Separators, Special Piping, and Storage Systems	10%	
Storm Drainage	8%	
Health Care Plumbing	6%	
Total	100%	

R3 Residential Plans Examiner		60 multiple-choice questions Exam fee: \$180 (P&P); \$180 (CBT) Open book—2-hour time limit
Content Area	% of Total	Reference
Administrative	5%	2009 <i>International Residential Code</i> ®
Site	10%	
Architectural and Life Safety	25%	
Structural	25%	
Energy Efficiency	5%	
Mechanical	10%	
Plumbing	10%	
Electrical	10%	
Total	100%	

RF Residential Fire Sprinkler Inspector/Plans Examiner		60 multiple-choice questions Exam fee: \$180 (P&P); \$180 (CBT) Open book—2-hour time limit
Content Area	% of Total	Reference
Sprinkler Components	5%	2009 <i>International Residential Code</i> ®
Piping Components	5%	2007 NFPA 13D, <i>Standard for the Installation of Sprinkler Systems in One- and Two-Family Dwellings and Manufactured Homes</i>
Water Supply	10%	
System Design	37%	
Installation	43%	
Total	100%	

Code Enforcement Examinations

14 Permit Technician 60 multiple-choice questions
Exam fee: \$180 (P&P); \$180 (CBT)
Open book—2-hour time limit

Content Area	% of Total	References
General Administration	39%	2009 <i>International Building Code</i> ®, chapters 1-3, 6, 12, and 34
Legal Aspects	22%	
Plans and Documents	25%	2009 <i>International Zoning Code</i> ®
Zoning and Site Development	14%	2002 <i>Legal Aspects of Code Administration</i>
Total	100%	1999 <i>Basic Code Enforcement</i>

75 Zoning Inspector 50 multiple-choice questions
Exam fee: \$180 (P&P)
Open book—2-hour time limit

Content Area	% of Total	References
Legal Aspects of Zoning Inspection	28%	2009 <i>International Zoning Code</i> ®
Administrative Aspects of Zoning Inspection	14%	2002 <i>Legal Aspects of Code Administration</i>
Plan Zoning	16%	
Development Regulations	22%	
Sign Regulations	20%	
Total	100%	

64 Property Maintenance and Housing Inspector 50 multiple-choice questions
Exam fee: \$180 (P&P)
Open book—2-hour time limit

Content Area	% of Total	References
Administration and Legal	22%	2009 <i>International Residential Code</i> ®
Light, Ventilation, and Occupancy	14%	2009 <i>International Property Maintenance Code</i> ®
Fire and Life Safety	14%	2002 <i>Legal Aspects of Code Administration</i>
Mechanical	6%	
Plumbing	10%	
Electrical	8%	
Property Conditions	26%	
Total	100%	

Code Enforcement Examinations (continued)

C1 Coastal and Floodplain Construction Inspector
Prerequisite Certifications: B1 and B2 (must be current)

60 multiple-choice questions
Exam fee: \$180 (P&P); \$180 (CBT)
Open book—2-hour time limit

Content Area	% of Total	References
General Construction Provisions	10%	2009 <i>International Building Code</i> ®
Special High Wind Provisions and Load Path Continuity	35%	2009 <i>International Residential Code</i> ®
Special Flood Hazard Areas	35%	SSTD 10-99 <i>Standard for Hurricane Resistant Residential Construction</i>
Detached and Attached Accessory Structures	10%	
Governmental Regulations	10%	2001 <i>Wood Frame Construction Manual for One- and Two-Family Dwellings and Commentary to the WFCM</i>
Total	100%	FEMA 499 <i>Home Builder's Guide to Coastal Construction Fact Sheets</i> 2000 FEMA 55 <i>Coastal Construction Manual</i> ASCE/SEI 24-05 <i>Flood Resistant Design and Construction</i>

21 Accessibility Inspector/Plans Examiner

60 multiple-choice questions
Exam fee: \$180 (P&P); \$180 (CBT)
Open book—1-1/2-hour time limit

Content Area	% of Total	References
General Administrative and Scoping Provisions	10%	2009 <i>International Building Code</i> ®, including Appendix E
Building Blocks	12%	ICC/ANSI A117.1-2003 <i>Standard on Accessible and Usable Buildings and Facilities</i> ®
Accessible Routes	30%	
General Site and Building Elements	9%	
Plumbing Facilities	10%	
Communications Elements	8%	
Special Rooms and Spaces	10%	
Built-in Furnishings and Equipment	3%	
Dwelling and Sleeping Units	8%	
Total	100%	

Please visit www.iccsafe.org/exams for expanded content outlines and the most up-to-date information. Outlines are subject to change.

Exam fees are listed for paper-and-pencil (P&P) method, if available, and computer-based testing (CBT).

Code Enforcement Examinations (continued)

DR Disaster Response Inspector

Prerequisite Certifications: See note below

50 multiple-choice questions
Exam fee: \$180 (P&P); \$180 (CBT)
Open book—2-hour time limit

Content Area	% of Total	References
Administration	30%	2009 <i>International Building Code</i> ®
Inspection	60%	2009 <i>International Residential Code</i> ®
Miscellaneous	10%	2009 <i>International Existing Building Code</i> ®
Total	100%	2008 <i>National Electrical Code</i> National Incident Management System* (This is a Federal program that candidates should be familiar with. It is not a publication.) Applied Technology Council (ATC) references: — ATC-20 <i>Procedures for Postearthquake Safety Evaluation of Buildings</i> , 1989 — ATC-20-1 <i>Field Manual: Postearthquake Safety Evaluation of Buildings</i> , 2nd edition, 2005 — ATC-20-2 <i>Addendum to the ATC-20 Postearthquake Building Safety Evaluation Procedures</i> , 1995 — ATC-45 <i>Field Manual: Safety Evaluation of Buildings After Wind Storms and Floods</i> , 2004
<p>Please note: Candidates are required to have at least one of the following <u>current</u> certifications:</p> <ul style="list-style-type: none"> Residential Inspector, Commercial Inspector, or Plans Examiner certification in either building, plumbing, mechanical, or electrical; Fire Inspector I, Fire Plans Examiner, OR Certified Building Official; <p>OR be a state-licensed architect or state-licensed engineer.</p> <p>* Information on the National Incident Management System (NIMS) is available at www.fema.gov/emergency/nims.</p>		

FG Fuel Gas Inspector

60 multiple-choice questions
Exam fee: \$180 (P&P); \$180 (CBT)
Open book—2-hour time limit

Content Area	% of Total	References
General Requirements and Administration	27%	2009 <i>International Fuel Gas Code</i> ®
Inspection and Testing	7%	
Venting—Materials, Installation, and Sizing	17%	
Piping Systems—Materials, Installation, and Sizing	22%	
Combustion Air	20%	
Types of Gas and Specialty Gas Systems	7%	
Total	100%	

Most examination references listed in this bulletin are available from the ICC Store, unless noted otherwise. Call 1-800-786-4452 or go to www.iccsafe.org and click on Store.

Sample questions are available for most examinations on our website: To get an idea of the style and format (not content) of questions on the examinations, to go www.iccsafe.org/exams, choose the category and then examination you wish to retrieve information on, then click on "Sample."

Fire Examinations

66 Fire Inspector I	60 multiple-choice questions Exam fee: \$180 (P&P); \$180 (CBT) Open book—2-hour time limit
----------------------------	---

Content Area	% of Total	References
General Inspection Administration	13%	2009 <i>International Fire Code</i> [®]
General Provisions for Fire Safety	50%	2009 <i>International Building Code</i> [®] , chapters 1-10
Occupancies	20%	<i>Fire Inspection and Code Enforcement (IFSTA)</i> **
Regulated Materials and Processes	17%	
Total	100%	

67 Fire Inspector II	50 multiple-choice questions Exam fee: \$180 (P&P); \$180 (CBT) Open book—2-hour time limit
-----------------------------	---

Prerequisite Certification:
Fire Inspector I (must be current)

Content Area	% of Total	References
General Inspection Administration	16%	2009 <i>International Fire Code</i> [®] , including Appendix B
General Provisions for Fire Safety	36%	2009 <i>International Building Code</i> [®] , chapters 1-10
Occupancies	24%	<i>Fire Inspection and Code Enforcement (IFSTA)</i> **
Regulated Materials and Processes	24%	
Total	100%	

F3 Fire Plans Examiner (equivalent to NFPA 1031, Fire Plans Examiner I and II)	60 multiple-choice questions Exam fee: \$180 (P&P); \$180 (CBT) Open book—3-1/2-hour time limit
---	---

Content Area	% of Total	References
Administration	5%	2009 <i>International Fire Code</i> [®]
Occupancies	15%	2009 <i>International Building Code</i> [®]
Hazardous Materials	20%	2007 NFPA 13 <i>Installation of Sprinkler Systems</i>
Fire Protection	35%	2007 NFPA 72 <i>National Fire Alarm Code</i>
Egress and Safety	25%	
Total	100%	

FM Certified Fire Marshal	60 multiple-choice questions Exam fee: \$180 (P&P); \$180 (CBT) Open book—2-hour time limit
----------------------------------	---

Prerequisite Examinations—Current certifications for:
Fire Inspector II
Fire Plans Examiner (equivalent to NFPA 1031 Fire Plans I and Fire Plans II)
Legal/Management Module
Technology Module

Content Area	% of Total	References
Public Information and Media Relations	5%	2008 NFPA 921 <i>Guide for Fire and Explosion Investigations</i>
Development of Lesson Plans, Fire Material, and Education Programs	12%	<i>Fire and Life Safety Educator</i> , 2nd edition (IFSTA)
Data Analysis	5%	
Fire Play, Fire Setter, and Arson Prevention	7%	
Public Relations	5%	
Fire Investigation	10%	
Due Process, Local Statutes, 4th and 14th Amendments	6%	
Fire Origin Determinations	12%	
Fire Cause Determination	7%	
Fire Scene Documentation	6%	
Evidence Retrieval and Chain of Custody	6%	
Interview Techniques and Suspect Questioning	9%	
Criminology	10%	
Total	100%	

** This reference available from IFSTA via their [website](#) or by calling 800-654-4055.



ICC/NAFED Fire Extinguisher Technician Examinations

AFFILIATE

FE Certified Portable Fire Extinguisher Technician

100 multiple-choice questions
Exam fee: \$180 (P&P); \$180 (CBT)
Open book—2-hour time limit

Content Area	% of Total	Reference
Inspection	4%	2007 NFPA 10— <i>Standard for Portable Fire Extinguishers</i>
Annual Maintenance	20%	2009 <i>International Fire Code</i> ®
6-Year and Internal Maintenance	10%	CFR 29 Part 1910
Hydrostatic Testing	10%	CGA <i>C-1 Methods of Hydrostatic Testing of Compressed Gas Cylinders</i>
Recharging	20%	
Selection, Placement, and Installation	20%	The CGA reference above can be obtained by contacting CGA at 703-788-2700 or by email at customerservice@cganet.com .
Safety	4%	
Recordkeeping and Documentation	12%	
Total	100%	

FK Pre-engineered Kitchen Fire Extinguishing System Technician

80 multiple-choice questions
Exam fee: \$180 (P&P); \$180 (CBT)
Open book—2-hour time limit

Content Area	% of Total	Reference
Occupancies and Hazards Identification	12%	2009 <i>International Fire Code</i> ®
General Component Requirements	20%	2009 <i>International Mechanical Code</i> ®
Hoods and Exhaust Systems	10%	2009 NFPA 17A— <i>Standard for Wet Chemical Extinguishing Systems</i>
Administration and Records	6%	
Installations	24%	2008 NFPA 96— <i>Standard for Ventilation Control and Fire Protection of Commercial Cooking Operations</i>
Inspection	4%	
Maintenance and Recharge	24%	
Total	100%	

FN Pre-engineered Industrial Fire Extinguishing System Technician

80 multiple-choice questions
Exam fee: \$180 (P&P); \$180 (CBT)
Open book—2-hour time limit

Content Area	% of Total	Reference
Occupancies and Hazards Identification	18%	2009 <i>International Fire Code</i> ®
General Component Requirements	20%	2009 <i>International Mechanical Code</i> ®
Hoods, Ventilation, and Exhaust Systems	10%	2009 NFPA 17— <i>Standard for Dry Chemical Extinguishing Systems</i>
Administration and Records	6%	
Installations	24%	2004 NFPA 2001— <i>Standard on Clean Agent Fire Extinguishing Systems</i>
Inspection	2%	
Maintenance and Recharge	20%	2007 NFPA 33— <i>Standard for Spray Application using Flammable or Combustible Materials</i>
Total	100%	2007 NFPA 34— <i>Standard for Dipping and Coating Processes Using Flammable or Combustible Materials</i>

Energy Conservation Examinations

77 Commercial Energy Inspector

50 multiple-choice questions
Exam fee: \$180 (P&P); \$180 (CBT)
Open book—2-hour time limit

Content Area	% of Total	Reference
General Plan Review Issues	7%	2009 <i>International Energy Conservation Code</i> ®
Building Envelope	38%	
Mechanical Systems	25%	
Electrical Power and Lighting Systems	26%	
Building Service Water Heating Systems and Equipment	4%	
Total	100%	

78 Commercial Energy Plans Examiner

70 multiple-choice questions
Exam fee: \$180 (P&P); \$180 (CBT)
Open book—3-1/2-hour time limit

Content Area	% of Total	Reference
General Plan Review Issues	16%	2009 <i>International Energy Conservation Code</i> ®
Building Envelope	27%	
Mechanical Systems	26%	
Electrical Power and Lighting Systems	27%	
Building Service Water Heating Systems and Equipment	4%	
Total	100%	

79 Residential Energy Inspector/Plans Examiner

50 multiple-choice questions
Exam fee: \$180 (P&P); \$180 (CBT)
Open book—2-hour time limit

Content Area	% of Total	Reference
General Plans and Inspection	28%	2009 <i>International Energy Conservation Code</i> ®
Alterations, Additions, and Change of Use or Occupancy	16%	
Building Envelope	46%	
Mechanical Systems	10%	
Total	100%	

Green Building Examinations

G1 Green Building—Residential Examiner

50 multiple-choice questions
Exam fee: \$180 (P&P); \$180 (CBT)
Open book—2-hour time limit

Content Area	% of Total	Reference
Green Building Introduction	20%	2009 <i>International Energy Conservation Code</i> ®
General Plans and Inspections	15%	2008 ICC 700 <i>National Green Building Standard</i>
Site Selection, Layout, and Development	15%	<i>LEED for Homes Reference Guide</i> (2008 or 2009 edition)
Building Design and Systems	20%	
Resource Efficiency	15%	
Indoor Air Quality	15%	
Total	100%	

Green Building Examinations—continued

G2 IgCC Commercial Inspector		60 multiple-choice questions Exam fee: \$180 (P&P); \$180 (CBT) Open book—2-hour time limit
Content Area	% of Total	Reference
Administration	10%	<i>International Green Construction Code—Public Version 2.0</i>
Land and Site Planning	20%	
Conservation and Efficiency of Materials	38%	
Indoor Air Quality	25%	
Existing Buildings and Site Development	7%	
Total	100%	

G3 IgCC Commercial Inspector with ASHRAE 189.1		60 multiple-choice questions Exam fee: \$180 (P&P); \$180 (CBT) Open book—2-hour time limit
Content Area	% of Total	Reference
Administration	10%	<i>International Green Construction Code—Public Version 2.0</i> ASHRAE Standard 189.1-2009, <i>Standard for the Design of High-Performance Green Buildings Except Low-Rise Residential Buildings</i>
Land and Site Planning	22%	
Conservation and Efficiency of Materials	43%	
Indoor Air Quality	25%	
Existing Buildings and Site Development	7%	
Total	100%	

G4 IgCC Plans Examiner		60 multiple-choice questions Exam fee: \$180 (P&P); \$180 (CBT) Open book—2-hour time limit
Content Area	% of Total	Reference
Administration	10%	<i>International Green Construction Code—Public Version 2.0</i>
Land and Site Planning	20%	
Conservation and Efficiency of Materials	38%	
Indoor Air Quality	25%	
Existing Buildings and Site Development	7%	
Total	100%	

G5 IgCC Plans Examiner with ASHRAE 189.1		60 multiple-choice questions Exam fee: \$180 (P&P); \$180 (CBT) Open book—2-hour time limit
Content Area	% of Total	Reference
Administration	10%	<i>International Green Construction Code—Public Version 2.0</i> ASHRAE Standard 189.1-2009, <i>Standard for the Design of High-Performance Green Buildings Except Low-Rise Residential Buildings</i>
Land and Site Planning	22%	
Conservation and Efficiency of Materials	43%	
Indoor Air Quality	25%	
Existing Buildings and Site Development	7%	
Total	100%	

Certified Building Official Examinations

01 Legal/Management Module		100 multiple-choice questions Exam fee: \$110 (P&P); \$110 (CBT) Open book—2-hour time limit
Content Area	% of Total	References
Financial Management	9%	2009 <i>International Building Code</i> ®
Records Management	11%	2009 <i>International Fire Code</i> ®
Personnel Management	30%	2009 <i>International Property Maintenance Code</i> ®
Interagency, Legislative, and Public Communication	16%	2009 <i>International Residential Code</i> ®
Code Enforcement	34%	2002 <i>Legal Aspects of Code Administration</i>
Total	100%	2007 <i>Building Department Administration</i> , 3rd edition 1999 <i>Basic Code Enforcement</i> <i>Human Resource Management: An Essential Guide</i> , 3rd Ed. <i>A Budgeting Guide for Local Government</i> , 2nd Ed.
<p>Please note: Individuals currently certified as either ICC Combination Inspector or ICC Combination Plans Examiner are not required to pass the technology examination to obtain the ICC CBO certification.</p> <p>Candidates that complete one of the two examinations (Technology or Legal/ Management Modules) have three years to complete certification.</p>		

02 Technology Module		75 multiple-choice questions Exam fee: \$110 (P&P); \$110 (CBT) Open book—2-hour 10-min. time limit
Content Area	% of Total	References
Architectural Plans Review	35%	2009 <i>International Building Code</i> ®
Structural Plans Review	12%	2009 <i>International Fire Code</i> ®
Building Systems Plans Review	18%	2009 <i>International Fuel Gas Code</i> ®
Field Inspection	35%	2009 <i>International Mechanical Code</i> ®
Total	100%	2009 <i>International Plumbing Code</i> ® 2009 <i>International Energy Conservation Code</i> ® 2009 <i>International Residential Code</i> ® ICC/ANSI A117.1-2003 <i>Standard on Accessible and Usable Buildings and Facilities</i> ® ASCE/SEI 24-05 <i>Flood Resistant Design and Construction</i> 2008 <i>National Electrical Code</i>
<p>Please note: Individuals currently certified as either ICC Combination Inspector or ICC Combination Plans Examiner are not required to pass the technology examination to obtain the ICC CBO certification.</p> <p>Candidates that complete one of the two examinations (Technology or Legal/Management Modules) have three years to complete certification.</p>		

Most examination references listed in this bulletin are available from the ICC Store, unless noted otherwise. Call 1-800-786-4452 or go to www.iccsafe.org and click on Store.

Sample questions are available for most examinations on our website: To get an idea of the style and format (not content) of questions on the examinations, to go www.iccsafe.org/exams, choose the category and then examination you wish to retrieve information on, then click on "Sample."

Please visit www.iccsafe.org/exams for expanded content outlines and the most up-to-date information. Outlines are subject to change.
Exam fees are listed for paper-and-pencil (P&P) method, if available, and computer-based testing (CBT).

Special Inspector Examinations

92 Prestressed Concrete Special Inspector

Prerequisite Certification:

Reinforced Concrete Special Inspector (must meet all requirements found on page 42)

90 multiple-choice questions

Exam fee: \$200 (CBT only)

Open book—3-1/2-hour time limit

Two-part examination; passing score on both parts is required.

Content Area	% of Total	References
General Requirements	3%	2009 <i>International Building Code</i> [®]
Concrete Quality	5%	ACI 318-08 <i>Building Code Requirements for Structural</i>
Reinforcement	48%	<i>Concrete and Commentary</i>
Prestressing and Grouting	35%	MNL 116 <i>Manual for Quality Control for Plants and Production</i>
Formwork, Joints, and Embeds	4%	<i>of Structural Precast Concrete Products</i> , 4th edition
Concrete Placement, Protection, and Curing	5%	ASTM Standards A 416/A 416 M-06 and A 421/A 421M-02
Total Code and Plan Reading	100%	Post Tensioning 3-Part Set: — 2000 <i>Field Procedures Manual for Unbonded Single Strand Tendons</i> , 3rd edition — 2000 <i>Specifications for Unbonded Single Strand Tendons</i> , 2nd edition — <i>Recommendations for Prestressed Rock and Soil Anchors</i> , 4th edition <i>Model Program for Special Inspection</i> [®]
<p>Please note: Part 1 of the exam has 60 questions that refer to the codes and is open book. Part 2 has 30 questions that refer to plans. Be sure you have the plans before starting the exam. YOU MUST DECIDE HOW TO MANAGE YOUR TIME FOR THE TWO PARTS OF THE EXAM. Once you leave Part 1, you CANNOT go back to it. You will have the remaining time for Part 2. As a guide to you, the exam is designed to require approximately 1-1/2 hours for the plan reading part.</p> <p>Listed ASTM Standards may be found in <i>ASTM Standards: As Referenced in the 2009 IBC</i>, ACI Publication SP-71, or at www.astm.org. ASTM Standards are those referenced in the 2009 IBC. Test items are based on the year of issue indicated.</p>		

84 Structural Masonry Special Inspector

Two-part examination; passing score on both parts is required.

90 multiple-choice questions

Exam fee: \$200 (CBT only)

Open book—3-1/2-hour time limit

Content Area	% of Total	References
General Requirements	9%	2009 <i>International Building Code</i> [®]
Materials	16%	ASTM Standards A 615 A/615M-04, A 951-02, C 476-02,
Masonry Placement	21%	C 1019-05, C 1314-07, C 216-07, C 270-07, C 62-05,
Reinforcement and Connector Placement	30%	C 90-06b, and C 140-07
Grout Placement	24%	TMS 402-08/ACI 530-08/ASCE 5-08 and TMS 602-08/
Total Code and Plan Reading	100%	ACI 530.1-08/ASCE 6-08 <i>Building Code Requirements for Masonry Structures/Specification for Masonry Structures</i> <i>Reinforced Grouted Brick Masonry</i> , 14th or 15th edition <i>Reinforced Concrete Masonry Construction Inspector's Handbook</i> , 6th or 7th edition <i>Model Program for Special Inspection</i> [®] 2009 <i>Masonry Codes and Specifications Compilation</i> ^{**}
<p>Please note: Part 1 of the exam has 60 questions that refer to the codes and is open book. Part 2 has 30 questions that refer to plans. Be sure you have the plans before starting the exam. YOU MUST DECIDE HOW TO MANAGE YOUR TIME FOR THE TWO PARTS OF THE EXAM. Once you leave Part 1, you CANNOT go back to it. You will have the remaining time for Part 2. As a guide to you, the exam is designed to require approximately 1-1/2 hours for the plan reading part.</p> <p>Listed ASTM Standards may be found in <i>ASTM Standards: As Referenced in the 2009 IBC</i>, ACI Publication SP-71, or at www.astm.org. ASTM Standards are those referenced in the 2009 IBC. Test items are based on the year of issue indicated.</p> <p><i>Reinforced Grout Brick and Reinforced Concrete Masonry</i> books are also available from the Masonry Institute of America at 1-800-221-4000. For more information on the 2009 <i>Masonry Codes and Specification Compilation</i>, visit www.iccsafe.org/store.</p> <p>^{**} This reference consists <u>only</u> of key portions of the 2009 IBC and 2009 IRC; TMS 402 and TMS 602 in their entirety; and <i>Model Program for Special Inspection</i>. This compilation may be used in lieu of these specifically noted individual references.</p>		

Note: The Masonry Society (TMS) co-sponsors the Structural Masonry Special Inspector exam with the Code Council, as a national certification for masonry inspection.

Special Inspector Examinations (continued)

86 Spray-applied Fireproofing Special Inspector		40 multiple-choice questions Exam fee: \$170 (CBT only) Open book—1-1/2-hour time limit
Content Area	% of Total	References
General Requirements	20%	2009 <i>International Building Code</i> ®
Materials, Preparation, Application, and Testing	80%	Technical Manual 12-A <i>Standard Practice for the Testing and Inspection of Field Applied Sprayed Fire-resistive Materials, an Annotated Guide</i> , 3rd edition
Total	100%	Technical Manual 12-B <i>Standard Practice for the Testing and Inspection of Field Applied Thin Film Intumescent Fire-resistive Materials, an Annotated Guide</i> , 2nd edition
Please note: This exam contains questions that refer to plans. Be sure you have the plans before starting the exam.		<i>Model Program for Special Inspection</i> ®

S1 Structural Steel and Bolting Special Inspector		90 multiple-choice questions Exam fee: \$200 (CBT only) Open book—3-1/2-hour time limit
Two-part examination; passing score on both parts is required		
Content Area	% of Total	References
General Requirements	11%	2009 <i>International Building Code</i> ®
Material Sampling, Testing, and Verification	18%	<i>Model Program for Special Inspection</i> ®
High-strength Bolting	44%	AISC <i>Steel Construction Manual</i> , 13th or 14th edition (includes
Steel Framing Observation	27%	<i>Specification for Structural Joints Using ASTM A325</i>
Total Code and Plan Reading	100%	<i>or A490 Bolts</i> , by RCSC, found in Part 16)
Please note: Part 1 of the exam has 60 questions that refer to the codes and is open book. Part 2 has 30 questions that refer to plans. Be sure you have the plans before starting the exam. YOU MUST DECIDE HOW TO MANAGE YOUR TIME FOR THE TWO PARTS OF THE EXAM. Once you leave Part 1, you CANNOT go back to it. You will have the remaining time for Part 2. As a guide to you, the exam is designed to require approximately 1-1/2 hours for the plan reading part.		

S2 Structural Welding Special Inspector		90 multiple-choice questions Exam fee: \$200 (CBT only) Open book—3-1/2-hour time limit
Prerequisite Certification: S1 Structural Steel and Bolting Special Inspector (must be current)		
Two-part examination; passing score on both parts is required.		
Content Area	% of Total	References
General Requirements	8%	2009 <i>International Building Code</i> ®
Material Sampling, Testing, and Verification	22%	<i>Model Program for Special Inspection</i> ®
Structural, Reinforcing, and Sheet Steel Welding	70%	AWS Structural Welding Code:
Total	100%	— D1.1 (2006 or 2008) - <i>Steel</i> — D1.3 (1998 or 2008) - <i>Sheet Steel</i> — D1.4 (1998 or 2005) - <i>Reinforcing Steel</i>
Please note: Part 1 of the exam has 60 questions that refer to the codes and is open book. Part 2 has 30 questions that refer to plans. Be sure you have the plans before starting the exam. YOU MUST DECIDE HOW TO MANAGE YOUR TIME FOR THE TWO PARTS OF THE EXAM. Once you leave Part 1, you CANNOT go back to it. You will have the remaining time for Part 2. As a guide to you, the exam is designed to require approximately 1-1/2 hours for the plan reading part.		ANSI/AWS A2.4-98 or A2.4-2007 <i>Standard Symbols for Welding, Brazing, and Nondestructive Examination</i>

Special Inspector Examinations (continued)

EC Soils Special Inspector		90 multiple-choice questions Exam fee: \$200 (CBT only) Open book—3-1/2-hour time limit
One-part examination		
Content Area	% of Total	References
General Requirements	18%	2009 <i>International Building Code</i> ®
Sampling, Classification, and Laboratory Test Results	19%	ASTM D 422-63 (2002)
Grading Plans and Site Preparation	33%	ASTM D 698-00
Fill Monitoring and Testing	30%	ASTM D 1556-00
Total	100%	ASTM D 1557-02 ASTM D 2487-00 (USCS) ASTM D 2488-00 ASTM D 4318-05 ASTM D 4718-87 ASTM D 6938-06e1 ASTM D 75-03 ASTM D 4959 <i>Geotechnical Testing, Observation, and Documentation</i> , Tim Davis, ASCE Press, 2nd edition <i>Model Program for Special Inspection</i> ®
<p>Please note: This exam consists of one part with a time limit of 3-1/2 hours and a total of 90 questions. This exam contains questions that refer to plans. Be sure you have the plans before starting the exam.</p> <p>Listed ASTM Standards may be found at www.astm.org. Test items are based on the year of issue indicated.</p>		

47 Reinforced Concrete Special Inspector		90 multiple-choice questions Exam fee: \$200 (CBT only) Open book—3-1/2-hour time limit
Two-part examination; passing score on both parts is required		
Content Area	% of Total	References
General Requirements	10%	2009 <i>International Building Code</i> ®
Concrete Quality	20%	ACI 318-08 <i>Building Code Requirements for Structural Concrete and Commentary</i>
Reinforcement	40%	
Formwork, Joints, and Embeds	15%	ASTM Standards A 615/A615M-04a, A 706/A 706M-05a,
Concrete Placement, Protection, and Curing	15%	A 775/A 775M-04, C 31/C 31M-06, C 33/C 33M-03,
Total	100%	C 94/C 94M-07, C 143/C 143M-08, C 150/C 150M-07, C 172-04, C 231-08c, C 685/C 685M-07 <i>Model Program for Special Inspection</i> ® ICC <i>Concrete Manual</i> ® (2006 or 2009 edition)
<p>Please note: Part 1 of the exam has 60 questions that refer to the codes and is open book. Part 2 has 30 questions that refer to plans. Be sure you have the plans before starting the exam. YOU MUST DECIDE HOW TO MANAGE YOUR TIME FOR THE TWO PARTS OF THE EXAM. Once you leave Part 1, you CANNOT go back to it. You will have the remaining time for Part 2. As a guide to you, the exam is designed to require approximately 1-1/2 hours for the plan reading part.</p> <p>NOTE: Passing the exam for the Reinforced Concrete Special Inspector does NOT certify you as a Reinforced Concrete Special Inspector. For information on additional requirements, see the information at www.iccsafe.org/inspector.</p>		<p>Above ASTM Standards may be found in <i>ASTM Standards: As Referenced in the 2009 IBC</i>, ACI Publication SP-71, or at www.astm.org. ASTM Standards are those referenced in the 2009 IBC. Test items are based on the year of issue indicated.</p>

National Certification Examinations Based on 2012 International Codes

Please visit www.iccsafe.org/exams for expanded content outlines and the most up-to-date information. Outlines are subject to change.

Exam fees are listed for paper-and-pencil (P&P) method, if available, and computer-based testing (CBT).

IMPORTANT NOTES:

ICC will offer paper-and-pencil exams based on the 2006, 2009, and 2012 International Codes through 2012.

The 2006 code-based exams will be available via paper-and-pencil testing only.

The 2009 code-based exams will be available via paper-and-pencil or computer-based testing through at least June 2012, with exceptions noted in this bulletin.

The 2012 code-based exams will be available via paper-and-pencil testing through June 2012, with exceptions noted in this bulletin, and via computer-based testing in July. Visit www.iccsafe.org/inspector for updated details on availability.

Residential Inspector Examinations

B1 Residential Building Inspector

60 multiple-choice questions
Exam fee: \$110 (P&P)
Open book—2-hour time limit

Content Area	% of Total	Reference
Code Administration	4%	2012 <i>International Residential Code</i> ®
Building Planning	8%	
Footings and Foundations	16%	
Floor Construction	14%	
Wall Construction and Coverings	27%	
Roof/Ceiling Construction and Penetrations	14%	
Public Safety	17%	
Total	100%	

E1 Residential Electrical Inspector

60 multiple-choice questions
Exam fee: \$110 (P&P); \$160 (CBT)
Open book—2-hour time limit

Content Area	% of Total	References
General Requirements	10%	2012 <i>International Residential Code</i> ® 2011 <i>National Electrical Code</i> (optional secondary reference)
Services	17%	
Branch Circuit and Feeder Requirements	28%	
Wiring Methods and Power and Lighting Distribution	21%	
Devices, Lighting Fixtures, and Appliances	19%	
Swimming Pools and Similar Installations	5%	
Total	100%	

Residential Inspector Examinations (continued)

M1 Residential Mechanical Inspector 60 multiple-choice questions
Exam fee: \$110 (P&P)
Open book—2-hour time limit

Content Area	% of Total	Reference
General Administration	10%	2012 <i>International Residential Code</i> ®
Heating and Cooling Equipment and Water Heaters	21%	
Exhaust Systems	9%	
Duct Systems	8%	
Combustion Air	19%	
Chimneys and Vents	18%	
Fuel Supply Systems	15%	
Total	100%	

P1 Residential Plumbing Inspector 60 multiple-choice questions
Exam fee: \$110 (P&P)
Open book—2-hour time limit

Content Area	% of Total	Reference
General Requirements	14%	2012 <i>International Residential Code</i> ®
Fixtures	8%	
Water Heaters	12%	
Water Supply and Distribution	21%	
Sanitary Drainage	23%	
Vents	22%	
Total	100%	

Commercial Inspector Examinations

B2 Commercial Building Inspector 80 multiple-choice questions
Exam fee: \$180 (P&P)
Open book—3-1/2-hour time limit

Content Area	% of Total	References
General Administration	6%	2012 <i>International Building Code</i> ®
Building Planning	20%	ACI 318-11 <i>Building Code Requirements for Structural</i>
Footings and Foundations	8%	<i>Concrete and Commentary</i> OR
Floor Construction	8%	ICC <i>Concrete Manual</i> ® (2006 or 2009 edition)
Wall Construction and Coverings	21%	
Roof/Ceiling Construction	6%	
Public Safety and Special Construction	31%	
Total	100%	

Commercial Inspector Examinations (continued)

E2 Commercial Electrical Inspector 80 multiple-choice questions
Exam fee: \$180 (P&P); \$180 (CBT)
Open book—3-1/2-hour time limit

Content Area	% of Total	Reference
General Requirements	10%	2011 <i>National Electrical Code</i>
Services	17%	
Branch Circuit and Feeder Requirements	19%	
Wiring Methods and Distribution Systems	19%	
General Use Equipment	12%	
Special Occupancies	9%	
Special Equipment	7%	
Special Systems	7%	
Total	100%	

M2 Commercial Mechanical Inspector 50 multiple-choice questions
Exam fee: \$180 (P&P)
Open book—2-hour time limit

Content Area	% of Total	References
General Administration	15%	2012 <i>International Mechanical Code</i> ®
Heating and Cooling and Water Heaters	15%	2012 <i>International Fuel Gas Code</i> ®
Exhaust and Ventilation Systems	20%	
Duct Systems	12%	
Combustion Air	14%	
Chimneys and Vents	14%	
Fuel Supply Systems	10%	
Total	100%	

P2 Commercial Plumbing Inspector 50 multiple-choice questions
Exam fee: \$180 (P&P)
Open book—2-hour time limit

Content Area	% of Total	References
General Requirements	10%	2012 <i>International Plumbing Code</i> ®
Fixtures	12%	2012 <i>International Fuel Gas Code</i> ®
Water Heaters	14%	ICC A117.1-2009 <i>Accessible and Usable Buildings and Facilities</i> ®
Water Supply and Distribution	14%	
Sanitary Drainage	16%	
Vents	12%	
Traps, Interceptors, Separators, Special Piping, and Storage Systems	10%	
Storm Drainage	6%	
Health Care Plumbing	6%	
Total	100%	

General Plans Examiner Examinations

B3 Building Plans Examiner 80 multiple-choice questions
Exam fee: \$180 (P&P)
Open book—3-1/2-hour time limit

Content Area	% of Total	References
General Administration	5%	2012 <i>International Building Code</i> ®
Building Planning	21%	ACI 318-11 <i>Building Code Requirements for Structural</i>
Footings and Foundations	8%	<i>Concrete and Commentary</i> OR
Floor Construction	4%	ICC <i>Concrete Manual</i> ® (2006 or 2009 edition)
Wall Construction and Coverings	12%	
Roof/Ceiling Construction	4%	
Public Safety and Special Construction	46%	
Total	100%	

E3 Electrical Plans Examiner 70 multiple-choice questions
Exam fee: \$180 (P&P); \$180 (CBT)
Open book—3-1/2-hour time limit

Content Area	% of Total	References
General Administration	2%	2012 <i>International Building Code</i> ®
Services	24%	2011 <i>National Electrical Code</i>
Branch Circuit and Feeder Requirements	19%	2011 <i>Ugly's Electrical References</i>
Wiring Methods and Distribution Systems	11%	
Equipment for General Use	15%	
Special Occupancies	16%	
Special Equipment	7%	
Special Systems	6%	
Total	100%	

M3 Mechanical Plans Examiner 50 multiple-choice questions
Exam fee: \$180 (P&P)
Open book—2-hour time limit

Content Area	% of Total	References
General Administration	5%	2012 <i>International Mechanical Code</i> ®
Appliances and Equipment	15%	2012 <i>International Fuel Gas Code</i> ®
Exhaust and Ventilation Systems	25%	
Duct Systems	8%	
Combustion Air	21%	
Chimneys and Vents	17%	
Fuel Supply Systems	9%	
Total	100%	

Please visit www.iccsafe.org/exams for expanded content outlines and the most up-to-date information. Outlines are subject to change.
Exam fees are listed for paper-and-pencil (P&P) method, if available, and computer-based testing (CBT).

General Plans Examiner Examinations (continued)

P3 Plumbing Plans Examiner		50 multiple-choice questions Exam fee: \$180 (P&P) Open book—2-hour time limit
Content Area	% of Total	References
General Requirements	6%	2012 <i>International Plumbing Code</i> ®
Fixtures	12%	2012 <i>International Fuel Gas Code</i> ®
Water Heaters	14%	ICC A117.1-2009 <i>Accessible and Usable Buildings and Facilities</i> ®
Water Supply and Distribution	16%	
Sanitary Drainage	14%	
Vents	14%	
Traps, Interceptors, Separators, Special Piping, and Storage Systems	10%	
Storm Drainage	8%	
Health Care Plumbing	6%	
Total	100%	

R3 Residential Plans Examiner		60 multiple-choice questions Exam fee: \$180 (P&P) Open book—2-hour time limit
Content Area	% of Total	Reference
Administrative	5%	2012 <i>International Residential Code</i> ®
Site	10%	
Architectural and Life Safety	25%	
Structural	25%	
Energy Efficiency	5%	
Mechanical	10%	
Plumbing	10%	
Electrical	10%	
Total	100%	

RF Residential Fire Sprinkler Inspector/Plans Examiner		60 multiple-choice questions Exam fee: \$180 (P&P) Open book—2-hour time limit
Content Area	% of Total	Reference
Sprinkler Components	5%	2012 <i>International Residential Code</i> ®
Piping Components	5%	2010 NFPA 13D, <i>Standard for the Installation of Sprinkler Systems in One- and Two-Family Dwellings and Manufactured Homes</i>
Water Supply	10%	
System Design	37%	
Installation	43%	
Total	100%	

Code Enforcement Examinations

14 Permit Technician 60 multiple-choice questions
Exam fee: \$180 (P&P)
Open book—2-hour time limit

Content Area	% of Total	References
General Administration	39%	2012 <i>International Building Code</i> ®, chapters 1-3, 6, 12, & 34
Legal Aspects	22%	2012 <i>International Zoning Code</i> ®
Plans and Documents	25%	2002 <i>Legal Aspects of Code Administration</i>
Zoning and Site Development	14%	1999 <i>Basic Code Enforcement</i>
Total	100%	

75 Zoning Inspector 50 multiple-choice questions
Exam fee: \$180 (P&P); \$180 (CBT)
Open book—2-hour time limit

Content Area	% of Total	References
Legal Aspects of Zoning Inspection	28%	2012 <i>International Zoning Code</i> ®
Administrative Aspects of Zoning Inspection	14%	2002 <i>Legal Aspects of Code Administration</i>
Plan Zoning	16%	
Development Regulations	22%	
Sign Regulations	20%	
Total	100%	

64 Property Maintenance and Housing Inspector 50 multiple-choice questions
Exam fee: \$180 (P&P); \$180 (CBT)
Open book—2-hour time limit

Content Area	% of Total	References
Administration and Legal	22%	2012 <i>International Residential Code</i> ®
Light, Ventilation, and Occupancy	14%	2012 <i>International Property Maintenance Code</i> ®
Fire and Life Safety	14%	2002 <i>Legal Aspects of Code Administration</i>
Mechanical	6%	
Plumbing	10%	
Electrical	8%	
Property Conditions	26%	
Total	100%	

Code Enforcement Examinations (continued)

C1 Coastal and Floodplain Construction Inspector
Prerequisite Certifications: B1 and B2 (must be current)

60 multiple-choice questions
Exam fee: \$180 (P&P)
Open book—2-hour time limit

Content Area	% of Total	References
General Construction Provisions	10%	2012 <i>International Building Code</i> ®
Special High Wind Provisions and Load Path Continuity	35%	2012 <i>International Residential Code</i> ®
Special Flood Hazard Areas	35%	SSTD 10-99 <i>Standard for Hurricane Resistant Residential Construction</i>
Detached and Attached Accessory Structures	10%	
Governmental Regulations	10%	2001 <i>Wood Frame Construction Manual for One- and Two-Family Dwellings and Commentary to the WFCM</i>
Total	100%	FEMA 499 <i>Home Builder's Guide to Coastal Construction Fact Sheets</i> 2000 FEMA 55 <i>Coastal Construction Manual</i> ASCE/SEI 24-05 <i>Flood Resistant Design and Construction</i>

21 Accessibility Inspector/Plans Examiner

60 multiple-choice questions
Exam fee: \$180 (P&P)
Open book—1-1/2-hour time limit

Content Area	% of Total	References
General Administrative and Scoping Provisions	10%	2012 <i>International Building Code</i> ®, including Appendix E
Building Blocks	12%	ICC A117.1-2009 <i>Accessible and Usable Buildings and Facilities</i> ®
Accessible Routes	30%	
General Site and Building Elements	9%	
Plumbing Facilities	10%	
Communications Elements	8%	
Special Rooms and Spaces	10%	
Built-in Furnishings and Equipment	3%	
Dwelling and Sleeping Units	8%	
Total	100%	

Please visit www.iccsafe.org/exams for expanded content outlines and the most up-to-date information. Outlines are subject to change.

Exam fees are listed for paper-and-pencil (P&P) method, if available, and computer-based testing (CBT).

Code Enforcement Examinations (continued)

DR Disaster Response Inspector
 Prerequisite Certifications: See note below

60 multiple-choice questions
 Exam fee: \$180 (P&P)
 Open book—2-hour time limit

Content Area	% of Total	References
Administration	30%	2012 <i>International Building Code</i> ®
Inspection	70%	2012 <i>International Residential Code</i> ®
Total	100%	2012 <i>International Existing Building Code</i> ® 2011 <i>National Electrical Code</i> National Incident Management System 100, 200, and 700A* (These are part of a Federal program, not a publication.) Applied Technology Council (ATC) references: — ATC-20 <i>Procedures for Postearthquake Safety Evaluation of Buildings</i> , 1989 — ATC-20-1 <i>Field Manual: Postearthquake Safety Evaluation of Buildings</i> , 2nd edition, 2005 — ATC-20-2 <i>Addendum to the ATC-20 Postearthquake Building Safety Evaluation Procedures</i> , 1995 — ATC-45 <i>Field Manual: Safety Evaluation of Buildings After Wind Storms and Floods</i> , 2004
<p>Please note: Candidates are required to have at least one of the following <u>current</u> certifications:</p> <ul style="list-style-type: none"> Residential Inspector, Commercial Inspector, or Plans Examiner certification in either building, plumbing, mechanical, or electrical; Fire Inspector I, Fire Plans Examiner, OR Certified Building Official; <p>OR be a state-licensed architect or state-licensed engineer.</p> <p>* Information on the National Incident Management System (NIMS) is available at www.fema.gov/emergency/nims.</p>		

FG Fuel Gas Inspector

60 multiple-choice questions
 Exam fee: \$180 (P&P)
 Open book—2-hour time limit

Content Area	% of Total	References
General Requirements and Administration	27%	2012 <i>International Fuel Gas Code</i> ®
Inspection and Testing	7%	
Venting—Materials, Installation, and Sizing	17%	
Piping Systems—Materials, Installation, and Sizing	22%	
Combustion Air	20%	
Types of Gas and Specialty Gas Systems	7%	
Total	100%	

Most examination references listed in this bulletin are available from the ICC Store, unless noted otherwise. Call 1-800-786-4452 or go to www.iccsafe.org and click on Store.

Sample questions are available for most examinations on our website: To get an idea of the style and format (not content) of questions on the examinations, to go www.iccsafe.org/exams, choose the category and then examination you wish to retrieve information on, then click on "Sample."

Fire Examinations

66 Fire Inspector I 60 multiple-choice questions
Exam fee: \$180 (P&P)
Open book—2-hour time limit

Content Area	% of Total	References
General Inspection Administration	13%	2012 <i>International Fire Code</i> [®]
General Provisions for Fire Safety	50%	2012 <i>International Building Code</i> [®] , chapters 1-10
Occupancies	20%	<i>Fire Inspection and Code Enforcement (IFSTA)</i> **
Regulated Materials and Processes	17%	
Total	100%	

67 Fire Inspector II 50 multiple-choice questions
Prerequisite Certification: Exam fee: \$180 (P&P)
Fire Inspector I (must be current) Open book—2-hour time limit

Content Area	% of Total	References
General Inspection Administration	16%	2012 <i>International Fire Code</i> [®] , including Appendix B
General Provisions for Fire Safety	36%	2012 <i>International Building Code</i> [®] , chapters 1-10
Occupancies	24%	<i>Fire Inspection and Code Enforcement (IFSTA)</i> **
Regulated Materials and Processes	24%	
Total	100%	

F3 Fire Plans Examiner (equivalent to NFPA 1031, Fire Plans Examiner I and II) 60 multiple-choice questions
Exam fee: \$180 (P&P)
Open book—3-1/2-hour time limit

Content Area	% of Total	References
Administration	5%	2012 <i>International Fire Code</i> [®]
Occupancies	15%	2012 <i>International Building Code</i> [®]
Hazardous Materials	20%	2010 NFPA 13 <i>Installation of Sprinkler Systems</i>
Fire Protection	35%	2010 NFPA 72 <i>National Fire Alarm Code</i>
Egress and Safety	25%	
Total	100%	

FM Certified Fire Marshal 60 multiple-choice questions
Prerequisite Examinations—Current certifications for: Exam fee: \$180 (P&P)
Fire Inspector II Open book—2-hour time limit
Fire Plans Examiner (equivalent to NFPA 1031 Fire Plans I and Fire Plans II)
Legal/Management Module
Technology Module

Content Area	% of Total	References
Public Information and Media Relations	5%	2011 NFPA 921 <i>Guide for Fire and Explosion Investigations</i>
Development of Lesson Plans, Fire Material, and Education Programs	12%	<i>Fire and Life Safety Educator</i> , 2nd edition (IFSTA)
Data Analysis	5%	
Fire Play, Fire Setter, and Arson Prevention	7%	
Public Relations	5%	
Fire Investigation	10%	
Due Process, Local Statutes, 4th and 14th Amendments	6%	
Fire Origin Determinations	12%	
Fire Cause Determination	7%	
Fire Scene Documentation	6%	
Evidence Retrieval and Chain of Custody	6%	
Interview Techniques and Suspect Questioning	9%	
Criminology	10%	
Total	100%	

** This reference available from IFSTA via their [website](#) or by calling 800-654-4055.



ICC/NAFED Fire Extinguisher Technician Examinations

AFFILIATE

FE Certified Portable Fire Extinguisher Technician

100 multiple-choice questions
Exam fee: \$180 (P&P); \$180 (CBT)
Open book—2-hour time limit

Content Area	% of Total	Reference
Inspection	4%	2007 NFPA 10— <i>Standard for Portable Fire Extinguishers</i>
Annual Maintenance	20%	2009 <i>International Fire Code</i> ®
6-Year and Internal Maintenance	10%	CFR 29 Part 1910
Hydrostatic Testing	10%	CGA <i>C-1 Methods of Hydrostatic Testing of Compressed Gas Cylinders</i>
Recharging	20%	
Selection, Placement, and Installation	20%	The CGA reference above can be obtained by contacting CGA at 703-788-2700 or by email at customerservice@cganet.com .
Safety	4%	
Recordkeeping and Documentation	12%	
Total	100%	

FK Pre-engineered Kitchen Fire Extinguishing System Technician

80 multiple-choice questions
Exam fee: \$180 (P&P)
Open book—2-hour time limit

Content Area	% of Total	Reference
Occupancies and Hazards Identification	12%	2012 <i>International Fire Code</i> ®
General Component Requirements	20%	2012 <i>International Mechanical Code</i> ®
Hoods and Exhaust Systems	10%	2009 NFPA 17A— <i>Standard for Wet Chemical Extinguishing Systems</i>
Administration and Records	6%	
Installations	24%	2008 NFPA 96— <i>Standard for Ventilation Control and Fire Protection of Commercial Cooking Operations</i>
Inspection	4%	
Maintenance and Recharge	24%	
Total	100%	

FN Pre-engineered Industrial Fire Extinguishing System Technician

80 multiple-choice questions
Exam fee: \$180 (P&P)
Open book—2-hour time limit

Content Area	% of Total	Reference
Occupancies and Hazards Identification	18%	2012 <i>International Fire Code</i> ®
General Component Requirements	20%	2012 <i>International Mechanical Code</i> ®
Hoods, Ventilation, and Exhaust Systems	10%	2009 NFPA 17— <i>Standard for Dry Chemical Extinguishing Systems</i>
Administration and Records	6%	
Installations	24%	2008 NFPA 2001— <i>Standard on Clean Agent Fire Extinguishing Systems</i>
Inspection	2%	
Maintenance and Recharge	20%	2010 NFPA 33— <i>Standard for Spray Application using Flammable or Combustible Materials</i>
Total	100%	2010 NFPA 34— <i>Standard for Dipping and Coating Processes Using Flammable or Combustible Materials</i>

Energy Conservation Examinations

77 Commercial Energy Inspector

50 multiple-choice questions
Exam fee: \$180 (P&P)
Open book—2-hour time limit

Content Area	% of Total	Reference
General Plan Review Issues	7%	2012 <i>International Energy Conservation Code</i> ®
Building Envelope	38%	
Mechanical Systems	25%	
Electrical Power and Lighting Systems	26%	
Building Service Water Heating Systems and Equipment	4%	
Total	100%	

78 Commercial Energy Plans Examiner

70 multiple-choice questions
Exam fee: \$180 (P&P)
Open book—3-1/2-hour time limit

Content Area	% of Total	Reference
General Plan Review Issues	16%	2012 <i>International Energy Conservation Code</i> ®
Building Envelope	27%	
Mechanical Systems	26%	
Electrical Power and Lighting Systems	27%	
Building Service Water Heating Systems and Equipment	4%	
Total	100%	

79 Residential Energy Inspector/Plans Examiner

50 multiple-choice questions
Exam fee: \$180 (P&P)
Open book—2-hour time limit

Content Area	% of Total	Reference
General Plans and Inspection	28%	2012 <i>International Energy Conservation Code</i> ®
Alterations, Additions, and Change of Use or Occupancy	16%	
Building Envelope	46%	
Mechanical Systems	10%	
Total	100%	

Green Building Examinations

G1 Green Building—Residential Examiner

50 multiple-choice questions
Exam fee: \$180 (P&P)
Open book—2-hour time limit

Content Area	% of Total	Reference
Green Building Introduction	20%	2012 <i>International Energy Conservation Code</i> ®
General Plans and Inspections	15%	2008 ICC 700 <i>National Green Building Standard</i>
Site Selection, Layout, and Development	15%	<i>LEED for Homes Reference Guide</i> (2008 or 2009 edition)
Building Design and Systems	20%	
Resource Efficiency	15%	
Indoor Air Quality	15%	
Total	100%	

Green Building Examinations—continued

G2 IgCC Commercial Inspector		60 multiple-choice questions Exam fee: \$180 (P&P); \$180 (CBT) Open book—2-hour time limit
Content Area	% of Total	Reference
Administration	10%	<i>International Green Construction Code—Public Version 2.0</i>
Land and Site Planning	20%	
Conservation and Efficiency of Materials	35%	
Indoor Air Quality	25%	
Existing Buildings and Site Development	10%	
Total	100%	

G3 IgCC Commercial Inspector with ASHRAE 189.1		60 multiple-choice questions Exam fee: \$180 (P&P); \$180 (CBT) Open book—2-hour time limit
Content Area	% of Total	Reference
Administration	10%	<i>International Green Construction Code—Public Version 2.0</i> ASHRAE Standard 189.1-2009, <i>Standard for the Design of High-Performance Green Buildings Except Low-Rise Residential Buildings</i>
Land and Site Planning	25%	
Conservation and Efficiency of Materials	40%	
Indoor Air Quality	25%	
Total	100%	

G4 IgCC Plans Examiner		60 multiple-choice questions Exam fee: \$180 (P&P); \$180 (CBT) Open book—2-hour time limit
Content Area	% of Total	Reference
Administration	10%	<i>International Green Construction Code—Public Version 2.0</i>
Land and Site Planning	20%	
Conservation and Efficiency of Materials	35%	
Indoor Air Quality	25%	
Existing Buildings and Site Development	10%	
Total	100%	

G5 IgCC Plans Examiner with ASHRAE 189.1		60 multiple-choice questions Exam fee: \$180 (P&P); \$180 (CBT) Open book—2-hour time limit
Content Area	% of Total	Reference
Administration	10%	<i>International Green Construction Code—Public Version 2.0</i> ASHRAE Standard 189.1-2009, <i>Standard for the Design of High-Performance Green Buildings Except Low-Rise Residential Buildings</i>
Land and Site Planning	25%	
Conservation and Efficiency of Materials	40%	
Indoor Air Quality	25%	
Total	100%	

Certified Building Official Examinations

01 Legal/Management Module		100 multiple-choice questions Exam fee: \$110 (P&P) Open book—2-hour time limit
Content Area	% of Total	References
Financial Management	9%	2012 <i>International Building Code</i> ®
Records Management	11%	2012 <i>International Fire Code</i> ®
Personnel Management	30%	2012 <i>International Property Maintenance Code</i> ®
Interagency, Legislative, and Public Communication	16%	2012 <i>International Residential Code</i> ®
Code Enforcement	34%	2002 <i>Legal Aspects of Code Administration</i>
Total	100%	2007 <i>Building Department Administration</i> , 3rd edition <i>Human Resource Management: An Essential Guide</i> , 3rd Ed. <i>A Budgeting Guide for Local Government</i> , 2nd Ed. 1999 <i>Basic Code Enforcement</i>
<p>Please note: Individuals currently certified as either ICC Combination Inspector or ICC Combination Plans Examiner are not required to pass the technology examination to obtain the ICC CBO certification.</p> <p>Candidates that complete one of the two examinations (Technology or Legal/ Management Modules) have three years to complete certification.</p>		

02 Technology Module		75 multiple-choice questions Exam fee: \$110 (P&P) Open book—2-hour 10-min. time limit
Content Area	% of Total	References
Architectural Plans Review	35%	2012 <i>International Building Code</i> ®
Structural Plans Review	12%	2012 <i>International Fire Code</i> ®
Building Systems Plans Review	18%	2012 <i>International Fuel Gas Code</i> ®
Field Inspection	35%	2012 <i>International Mechanical Code</i> ®
Total	100%	2012 <i>International Plumbing Code</i> ® 2012 <i>International Energy Conservation Code</i> ® 2012 <i>International Residential Code</i> ® ICC/ANSI A117.1-2009 <i>Accessible and Usable Buildings and Facilities</i> ® ASCE/SEI 24-05 <i>Flood Resistant Design and Construction</i> 2011 <i>National Electrical Code</i>
<p>Please note: Individuals currently certified as either ICC Combination Inspector or ICC Combination Plans Examiner are not required to pass the technology examination to obtain the ICC CBO certification.</p> <p>Candidates that complete one of the two examinations (Technology or Legal/Management Modules) have three years to complete certification.</p>		

Most examination references listed in this bulletin are available from the ICC Store, unless noted otherwise. Call 1-800-786-4452 or go to www.iccsafe.org and click on Store.

Sample questions are available for most examinations on our website: To get an idea of the style and format (not content) of questions on the examinations, to go www.iccsafe.org/exams, choose the category and then examination you wish to retrieve information on, then click on "Sample."

Please visit www.iccsafe.org/exams for expanded content outlines and the most up-to-date information. Outlines are subject to change.
Exam fees are listed for paper-and-pencil (P&P) method, if available, and computer-based testing (CBT).