

2009 International Residential Code and Commentary Errata

(Only errata to Commentary are shown-see International Residential Code Errata for Code Errata)

(Portions of text and tables not shown are unaffected by the errata)

1st and 2nd PRINTING (POSTING DATE)

CHAPTER 2 DEFINITIONS

R202, ATTIC.

The unfinished space.....of the top story and the roof assembly. ~~Such a space would be the top story, rather than the attic, if it is finished and occupiable.~~

2009 International Residential Code and Commentary Errata

(Only errata to Commentary are shown-see International Residential Code Errata for Code Errata)

(Portions of text and tables not shown are unaffected by the errata)

1st and 2nd PRINTING (September 4, 2013)

CHAPTER 3 BUILDING PLANNING

Section R301.2.1.1 Design criteria

With the exception of concrete construction, the prescriptive provisions of the code apply only where the basic wind speed is ~~equal to or exceeds~~ less than 100 miles per hour in hurricane-prone regions, or less than 110 miles per hour elsewhere.

...

Table R301.2.1.3 EQUIVALENT BASIC WIND SPEEDS

...fastest-mile wind velocity would be ~~90 mph (40.2 m/s)~~ 95 mph (42.5 m/s).

2009 International Residential Code and Commentary Errata

(Only errata to Commentary are shown-see International Residential Code Errata for Code Errata)

(Portions of text and tables not shown are unaffected by the errata)

1st and 2nd PRINTING (November 29, 2011)

CHAPTER 3 BUILDING PLANNING

R302.1 Exterior walls.

Unlike the IBC, protected. Openings in a wall located at a distance equal to or greater than 3 feet (914 mm), but less than 5 feet (1525 mm) from the lot line cannot exceed 25 percent of the maximum wall area [see Commentary Figures R302.1(2) and R302.1(3)].

Exception 1 permits walls, openings, projections or penetrations that are 90 degrees (1.57 rad) (perpendicular) to the line used to determine the fire separation distance ~~to be exempt from the requirements of Table R302.1~~are not prohibited. Section R302.4 describes through penetrations and membrane penetrations in detail.

See the definition of "Fire separation distance" in Chapter 2. ~~The requirements for protection do not apply to walls that are at a right angle (perpendicular to) the property line~~ [see Commentary Figures R302.1(2) and R302.1(3)].

Exception 2 allows dwellings and accessory structures, on the same lot, to be considered one building and the requirements of Table R302.1 will not apply to the exterior walls facing each other. This exception eliminates the imaginary line between two buildings on the lot when measuring the fire separation distance. Table R302.1 will apply to the other exterior walls of the buildings.

Exception ~~4~~3 applies to detached tool and storage sheds, playhouses and similar structures that are exempt from permits. Projections from these structures, however, are not permitted to extend over the property line.

Exception ~~2~~4 will allow roof eave projection for detached garages to be closer than 2 feet (610 mm) from the lot line, but limits the roof eave projection to 4 inches (102 mm). This projection cannot extend over the property line.

Exception ~~3~~5 allows foundation vents installed in compliance with the code in areas where openings are otherwise prohibited.

R302.2 Townhouses.

Because of the difficulties involved in construction and the potential for unnecessary duplication, the exception offers an alternative to the two separate 1-hour walls by permitting the construction of a shared or "common" ~~2~~1-hour-rated wall between the townhouses. See Commentary Figure R302.2 for an illustration of the two separate 1-hour walls and the common ~~2~~1-hour wall.

2009 International Residential Code and Commentary Errata

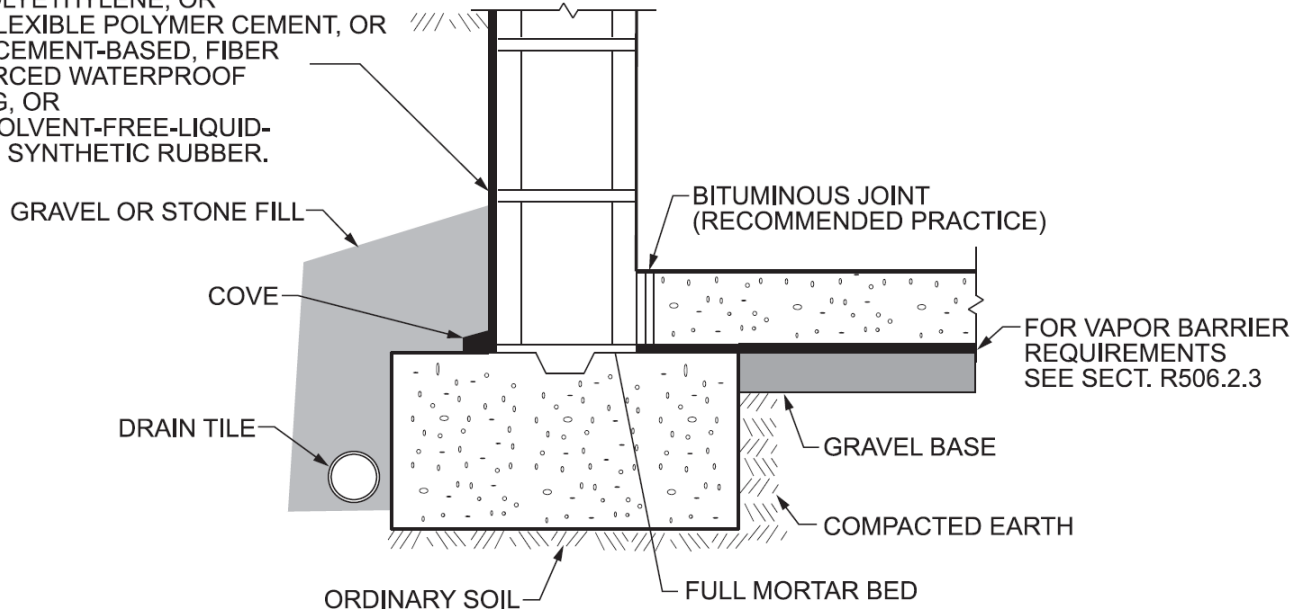
(Only errata to Commentary are shown-see International Residential Code Errata for Code Errata)

(Portions of text and tables not shown are unaffected by the errata)

1st and 2nd PRINTING (POSTING DATE)

Figure R406.2

- WATERPROOFING MEMBRANE
1. TWO-PLY HOT MOPPED FELT, OR
 2. 6-MIL PVC, OR
 3. 55-POUND ROLL ROOFING, OR
 4. 40-MIL POLYMER-MODIFIED ASPHALT, OR
 5. 6-MIL POLYETHYLENE, OR
 6. 60 MIL FLEXIBLE POLYMER CEMENT, OR
 7. 1/8 INCH CEMENT-BASED, FIBER REINFORCED WATERPROOF COATING, OR
 8. 60 MIL SOLVENT-FREE-LIQUID-APPLIED SYNTHETIC RUBBER.



2009 International Residential Code and Commentary Errata

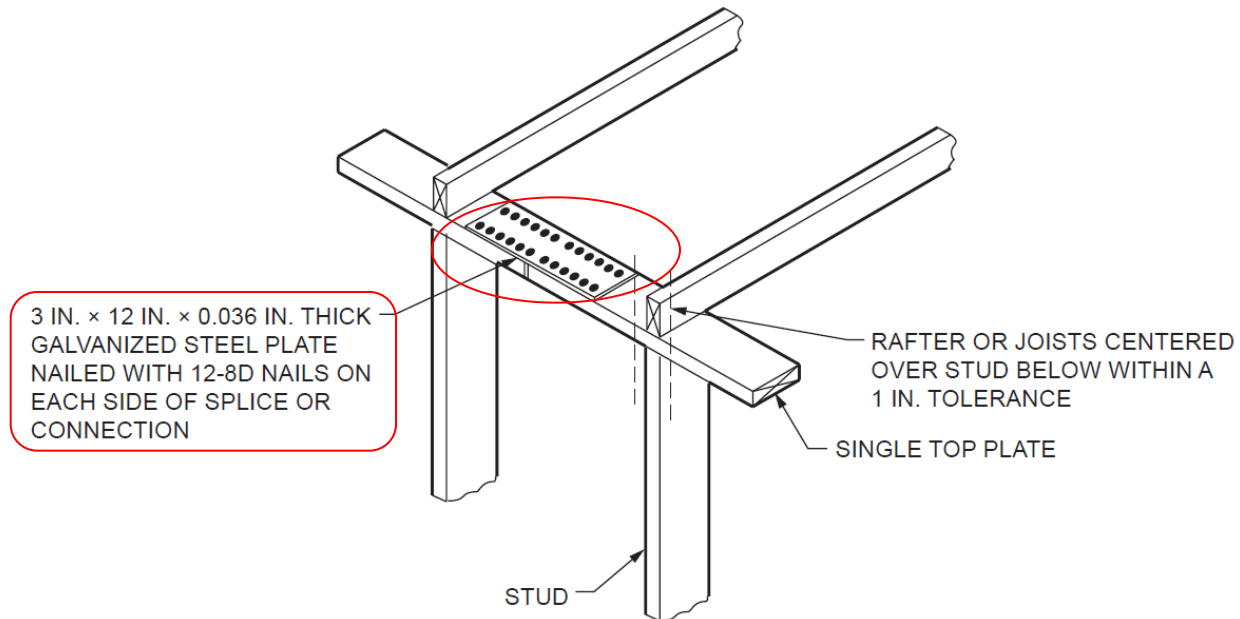
(Only errata to Commentary are shown-see International Residential Code Errata for Code Errata)

(Portions of text and tables not shown are unaffected by the errata)

Applicable to the 1st PRINTING (This Errata Posted: April 18, 2022)

CHAPTER 6 WALL CONSTRUCTION

Commentary Figure R602.3.2:



NOTE: BEARING OR EXTERIOR WALL

2012 International Residential Code and Commentary Errata

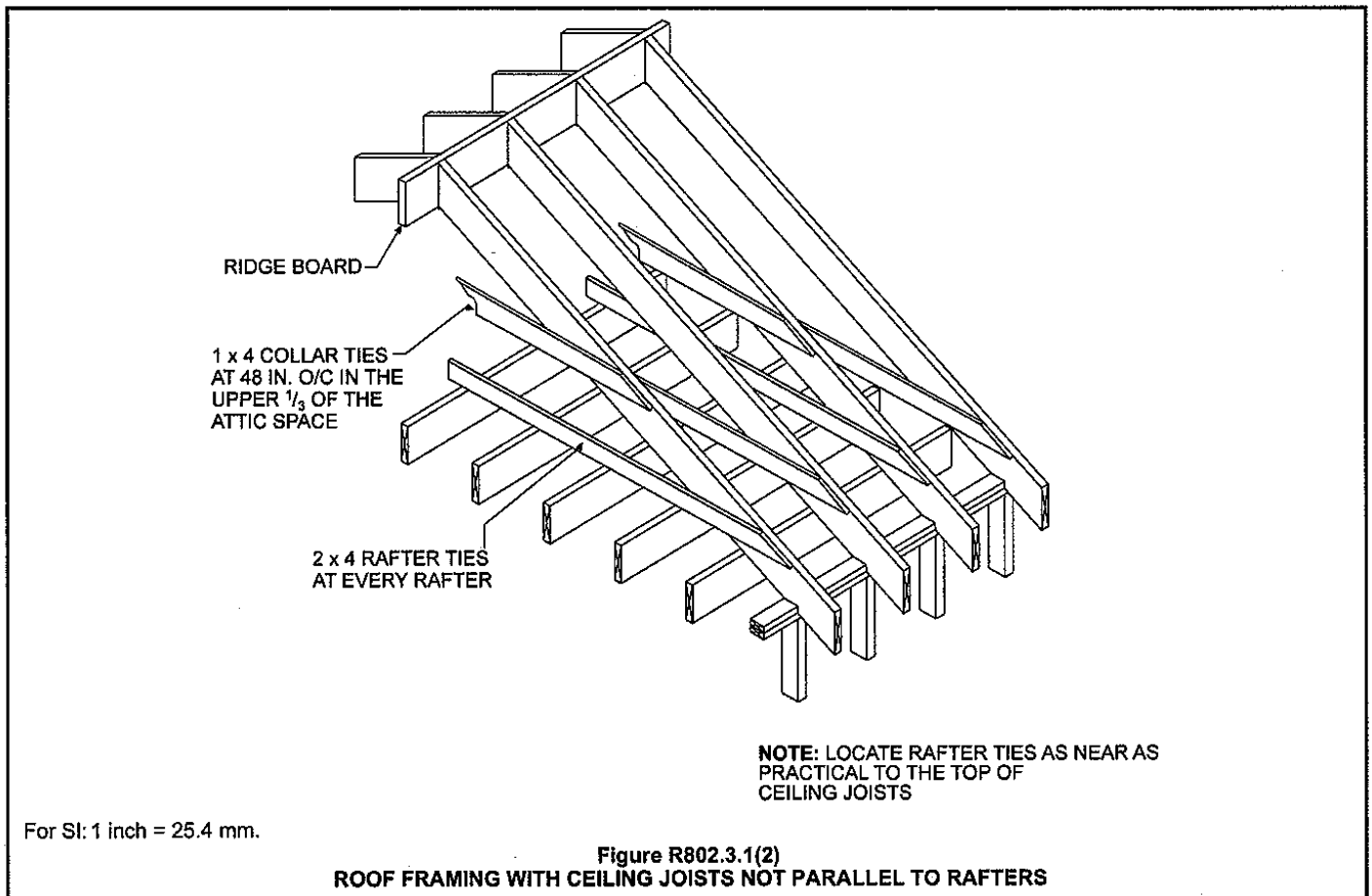
(Only errata to Commentary are shown-see International Residential Code Errata for Code Errata)

(Portions of text and tables not shown are unaffected by the errata)

1st and 2nd PRINTING (July 15, 2014)

CHAPTER 8 ROOF-CEILING CONSTRUCTION

Replace Figure R802.3.1 (2) with the following figure:



2012 International Residential Code and Commentary Errata

(Only errata to Commentary are shown-see International Residential Code Errata for Code Errata)

(Portions of text and tables not shown are unaffected by the errata)

Replace Figure R802.3.1 (3) with the following figure:

