

2015 International Residential Code Errata

(Portions of text and tables not shown are unaffected by the errata)

Applicable to the 1st and 2nd PRINTING (This Errata Posted: July 19, 2017)

CHAPTER 4 FOUNDATIONS

FIGURE R403.1(3) PERMANENT WOOD FOUNDATION CRAWL SPACE SECTION

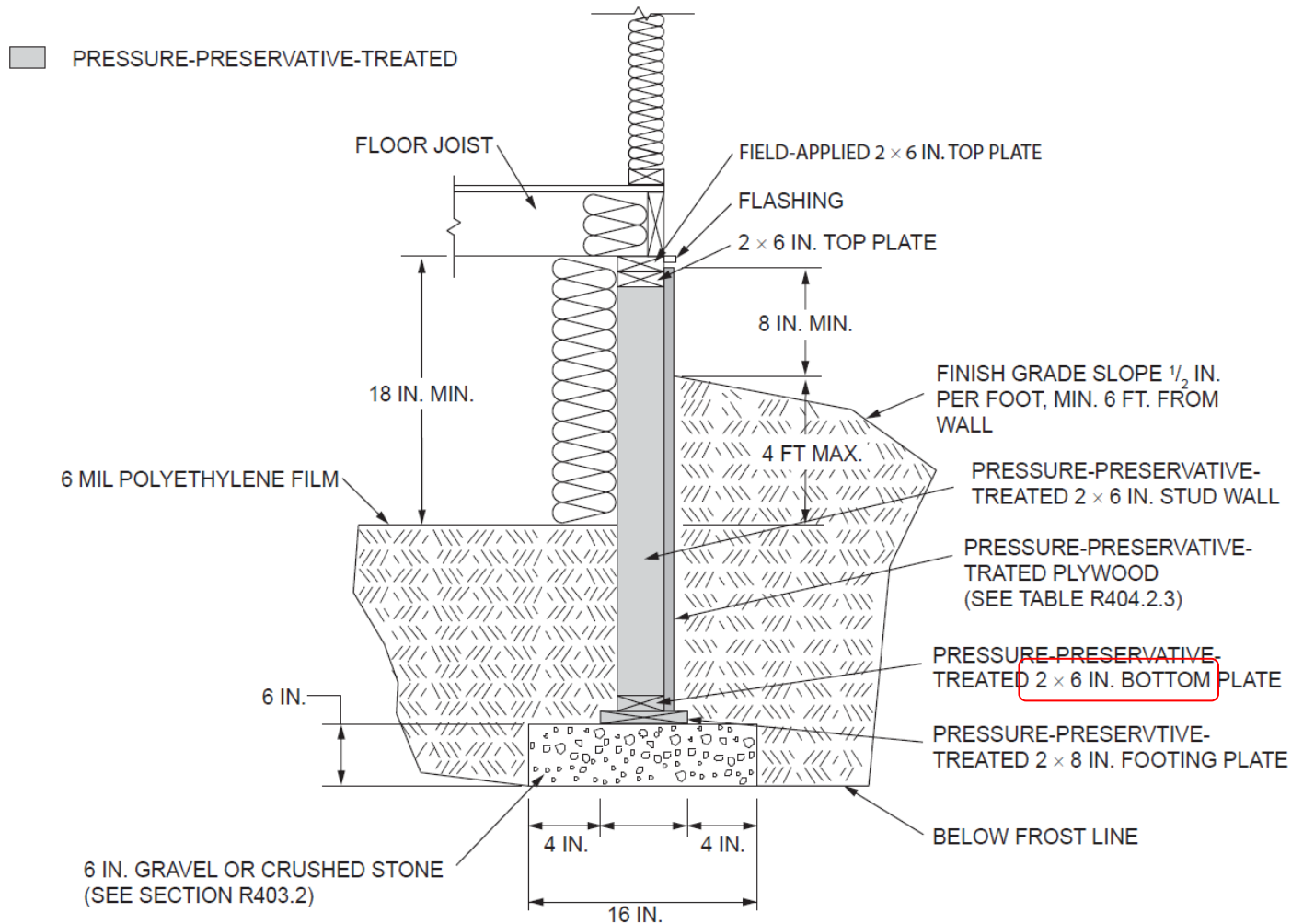


FIGURE R403.1(3)
PERMANENT WOOD FOUNDATION CRAWL SPACE SECTION

2015 International Residential Code Errata

(Portions of text and tables not shown are unaffected by the errata)

Applicable to the 1st and 2nd PRINTING (This Errata Posted: January 17, 2017)

CHAPTER 4 FOUNDATIONS

R404.1.2.1 Masonry foundation walls. Concrete masonry and clay masonry foundation walls shall be constructed as set forth in Table R404.1.1(1), R404.1.1(2), R404.1.1(3) or R404.1.1(4) and shall also comply with applicable provisions of Section R606. In buildings assigned to Seismic Design Categories D0, D1 and D2, concrete masonry and clay masonry foundation walls shall also comply with Section R404.1.4.1. Rubble stone masonry foundation walls shall be constructed in accordance with Sections R404.1.8 and ~~R606.3.2~~ R606.4.2. Rubble stone masonry walls shall not be used in Seismic Design Categories D0, D1 and D2.

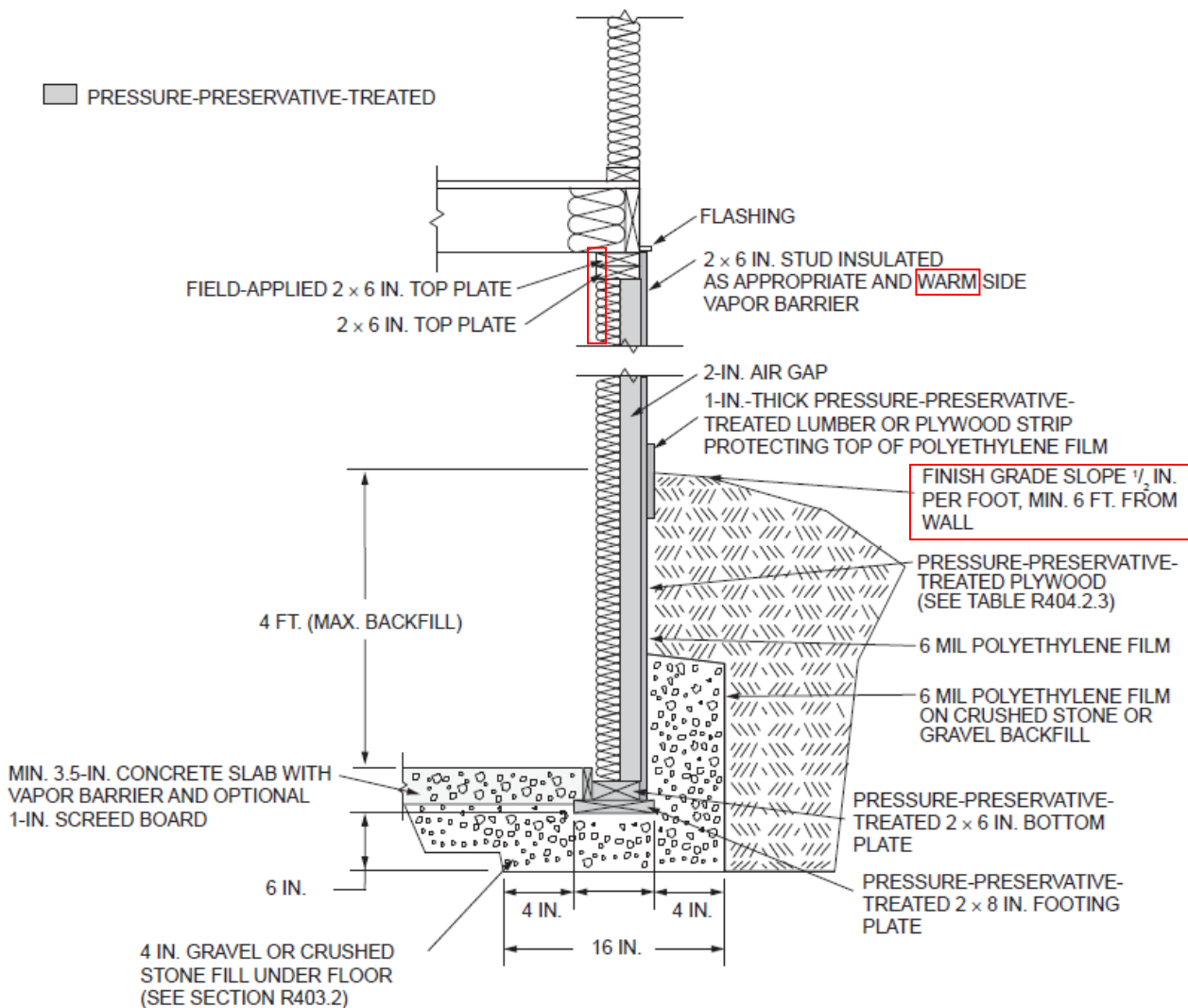
2015 International Residential Code Errata

(Portions of text and tables not shown are unaffected by the errata)

Applicable to the 1st PRINTING (This Errata Posted: November 18, 2015)

Chapter 4 FOUNDATIONS

FIGURE R403.1(2)



2015 International Residential Code Errata

(Portions of text and tables not shown are unaffected by the errata)

Applicable to the 1st PRINTING (This Errata Posted: August 6, 2015)

Chapter 4 FOUNDATIONS

TABLE R404.1.2(1)
MINIMUM HORIZONTAL REINFORCEMENT FOR CONCRETE BASEMENT WALLS^{a, b}

MAXIMUM UNSUPPORTED HEIGHT OF BASEMENT WALL (feet)	LOCATION OF HORIZONTAL REINFORCEMENT
≤ 8	One No. 4 bar within 12 inches of the top of the wall story and one No. 4 bar near mid-height of the wall story.
> 8	One No. 4 bar within 12 inches of the top of the wall story and one No. 4 bar near third points in the wall story.

For SI: 1 inch = 25.4 mm, 1 foot = 304.8 mm, 1 pound per square inch = 6.895 kPa.

a. Horizontal reinforcement requirements are for reinforcing bars with a minimum yield strength of 40,000 psi and concrete with a minimum concrete compressive strength of 2,500 psi.

b. See Section [R404.1.3.2](#) for minimum reinforcement required for foundation walls supporting above-grade concrete walls.

2015 International Residential Code Errata

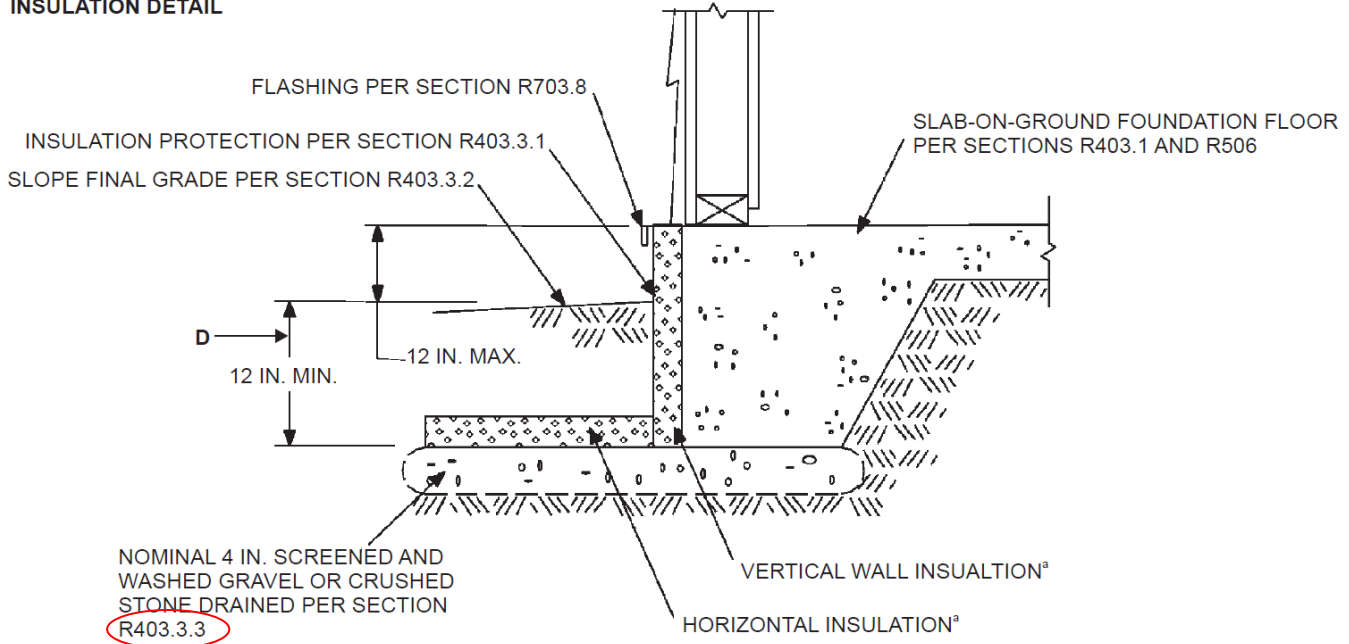
(Portions of text and tables not shown are unaffected by the errata)

Applicable to the 1st PRINTING (This Errata Posted: July 13, 2015)

Chapter 4 FOUNDATIONS

Figure 403.3.3

INSULATION DETAIL



HORIZONTAL INSULATION PLAN

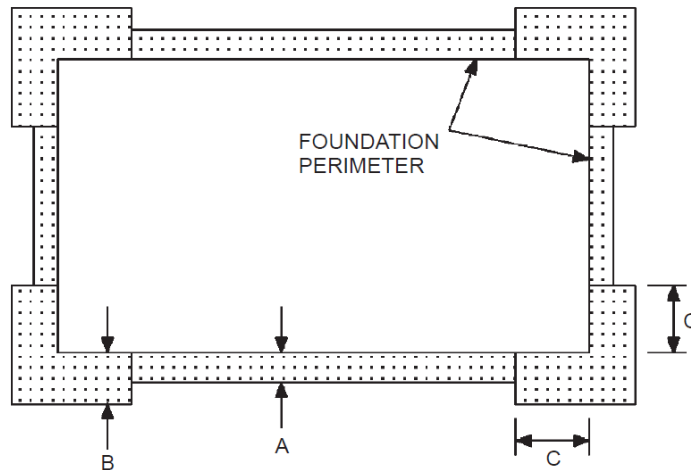


FIGURE R403.3(1)
INSULATION PLACEMENT FOR FROST-PROTECTED FOOTINGS IN HEATED BUILDINGS

2015 International Residential Code Errata

(Portions of text and tables not shown are unaffected by the errata)

1st PRINTING (August 4, 2014)

Chapter 4 FOUNDATIONS

Figure R403.1.3:

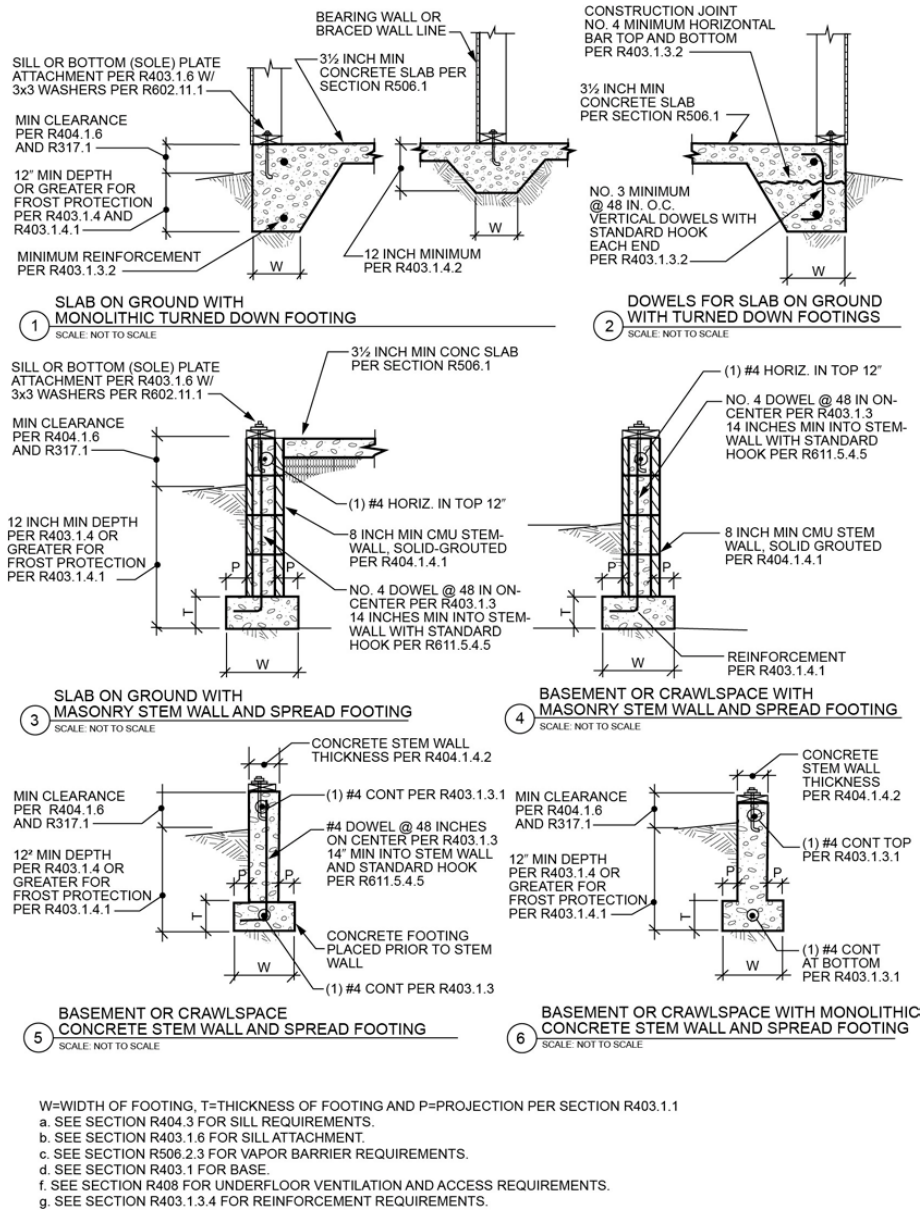


FIGURE R403.1.3
REINFORCED CONCRETE FOOTINGS AND MASONRY AND CONCRETE
STEM WALLS IN SDC D₀, D₁ AND D₂^{a,b,c,d,e,f}