



*Welcome to the*

# 2019 Annual Conference Educational Sessions



**Session: 1 October Mass Shooting**



# Full Disclosure



- I am not a code expert by any means.





ROUTE 91  
HARVEST





- On October 1<sup>st</sup>, 2017 a horrible event unfolded on the south end of the Las Vegas “Strip”.
  - An unassuming Sunday Night.....
- This tragedy shocked the local community, the state and our nation.
- The investigation into this incident is now closed.





# So what is Route 91?

- 3-Day Country Music Festival featuring some of the biggest names in the country music industry.
- Fourth year this event has taken place at this venue site.
- Set to take place from Friday September 29<sup>th</sup> thru October 1.
- Attendance on the night of the tragedy was 22,000.





# Quick Look: The Killer



- 64 y/o WMA.
- Educated & wealthy.
- Known large gambler.
- No contact with LE other than minor traffic violations.
- Paid of his markers before this event.





# Sequence of Events: This can happen anywhere.



## September 2017:

- 9/17 – 9/28/17 – Paddock checked into The Ogden.
  - Overlapping reservation with Mandalay Bay
  - Life is Beautiful event taking place Sept. 22- 24.
- 9/25/17 – Paddock checked into Mandalay Bay, suite 32-135.
- 9/29/17 – Paddock checked into suite 32-134, connecting to 32-135.





# Night of October 1



## October 1

- At approximately 9:18 pm, Mandalay Bay Security Officer Jesus Campos was assigned to check several Hotel Service Optimization System (HotSOS) alarms. Room 32-129 was the last room to be checked.
- At approximately 9:47 pm Security Officer Campos is unable to exit the stairwell to the 32<sup>nd</sup> floor.
  - "L" bracket placed by Paddock
  - Campos calls it into Maintenance. Maintenance Engineer Schuck is dispatched to handle the door issue.
- At 10:06 Security Officer Campos is in the 32<sup>nd</sup> floor hallway and calls into dispatch "hey there are shots fired in , uh, 32-135"
  - Both Campos and Engineer Schuck initially thought the gunfire was "rapid drilling" or "jack hammer" type noises.
  - Paddock sees Campos on the surveillance system he deployed on room service carts. He fires down the hallway at Campos. He is struck in the lower leg by shrapnel.
- From approximately 10:06 to 10:16 Paddock fires more than 1,050 rounds from his room.
  - All but a hundred or so were fired out the windows towards the concert venue or fuel tanks.
  - Others were fired down the hallway at Security Officer Campos.





# Night of October 1



- Several LVMPD officers had made it to the 31<sup>st</sup> floor along with some armed hotel security officers by 10:11 pm.
- At 10:12 two LVMPD officer on the street level outside the venue are hit by gunfire.
- At a point in time between 10:16 and 10:18 Paddock kills himself.
- No more active gunfire.
- From approximately 10:16 to 10:56 pm a Strike Team of LVMPD officers clear the 31<sup>st</sup> floor and proceed to the 32<sup>nd</sup> floor via the stairwell.
- 10:57 they use standard forcible entry tools to breach the barricaded stairwell door on the 32<sup>nd</sup> floor.
- 11:20 they use an explosive breach to enter the suite where they find Paddock dead.

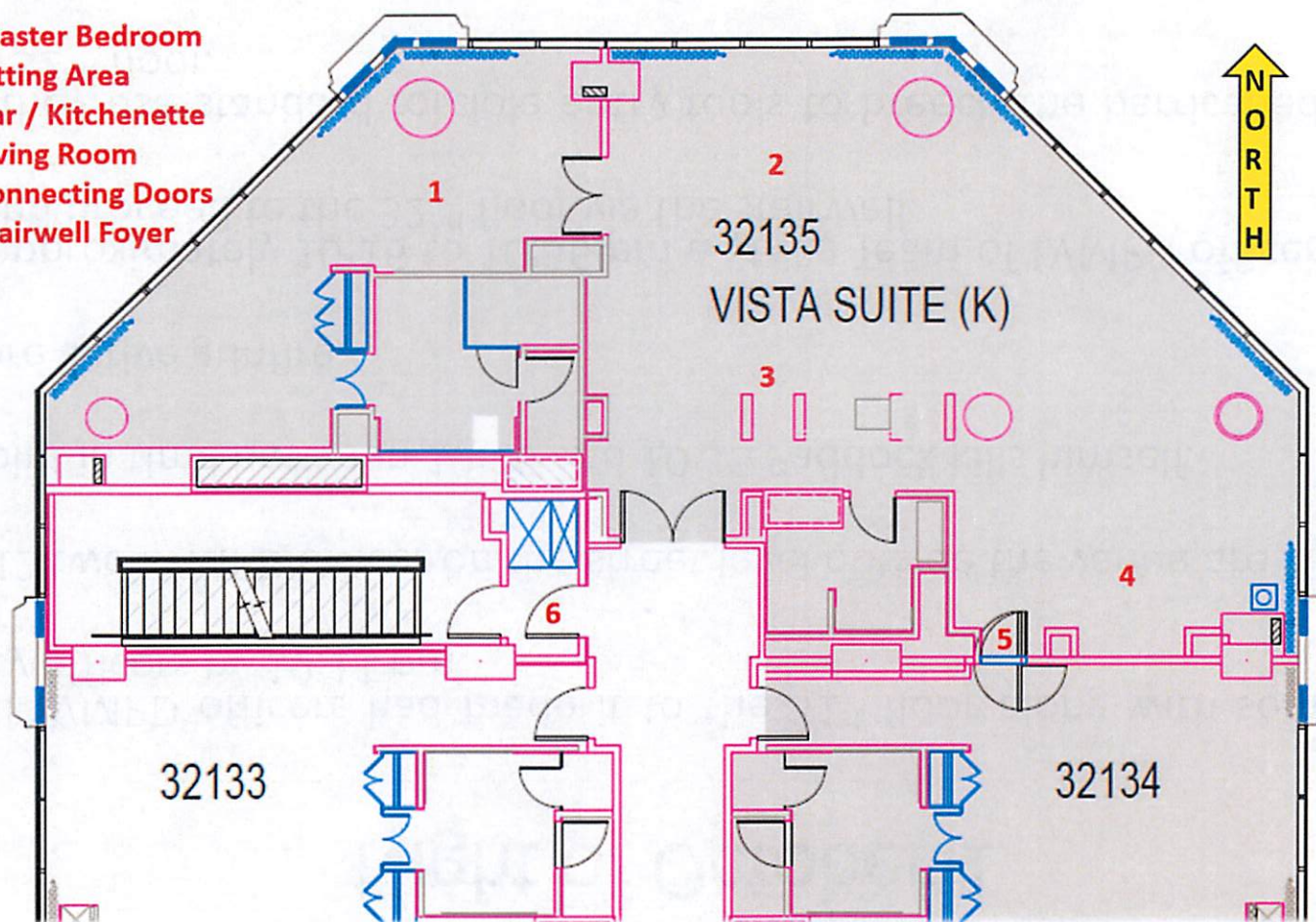




# Crime Scene at Mandalay Bay



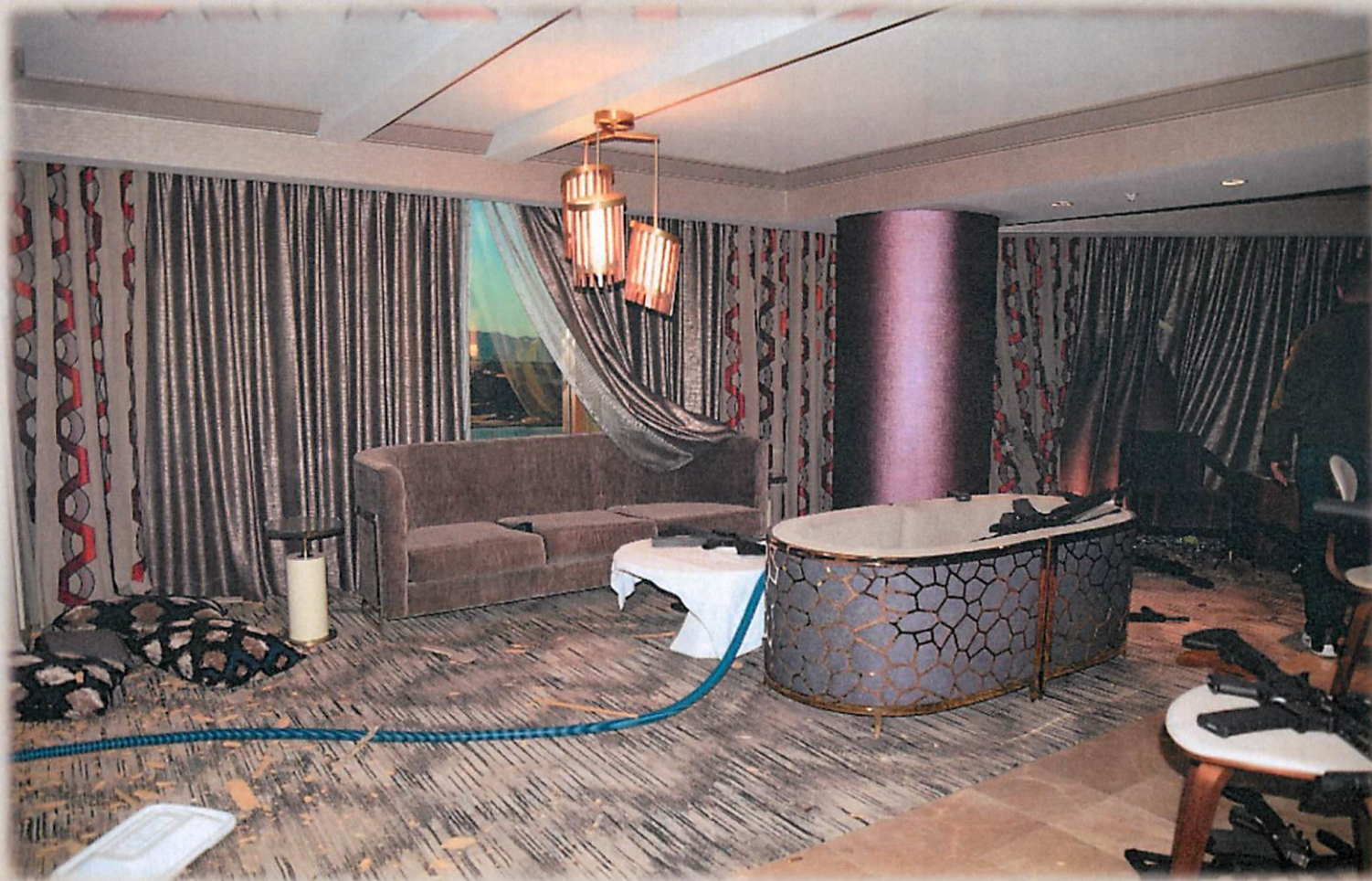
1. Master Bedroom
2. Sitting Area
3. Bar / Kitchenette
4. Living Room
5. Connecting Doors
6. Stairwell Foyer







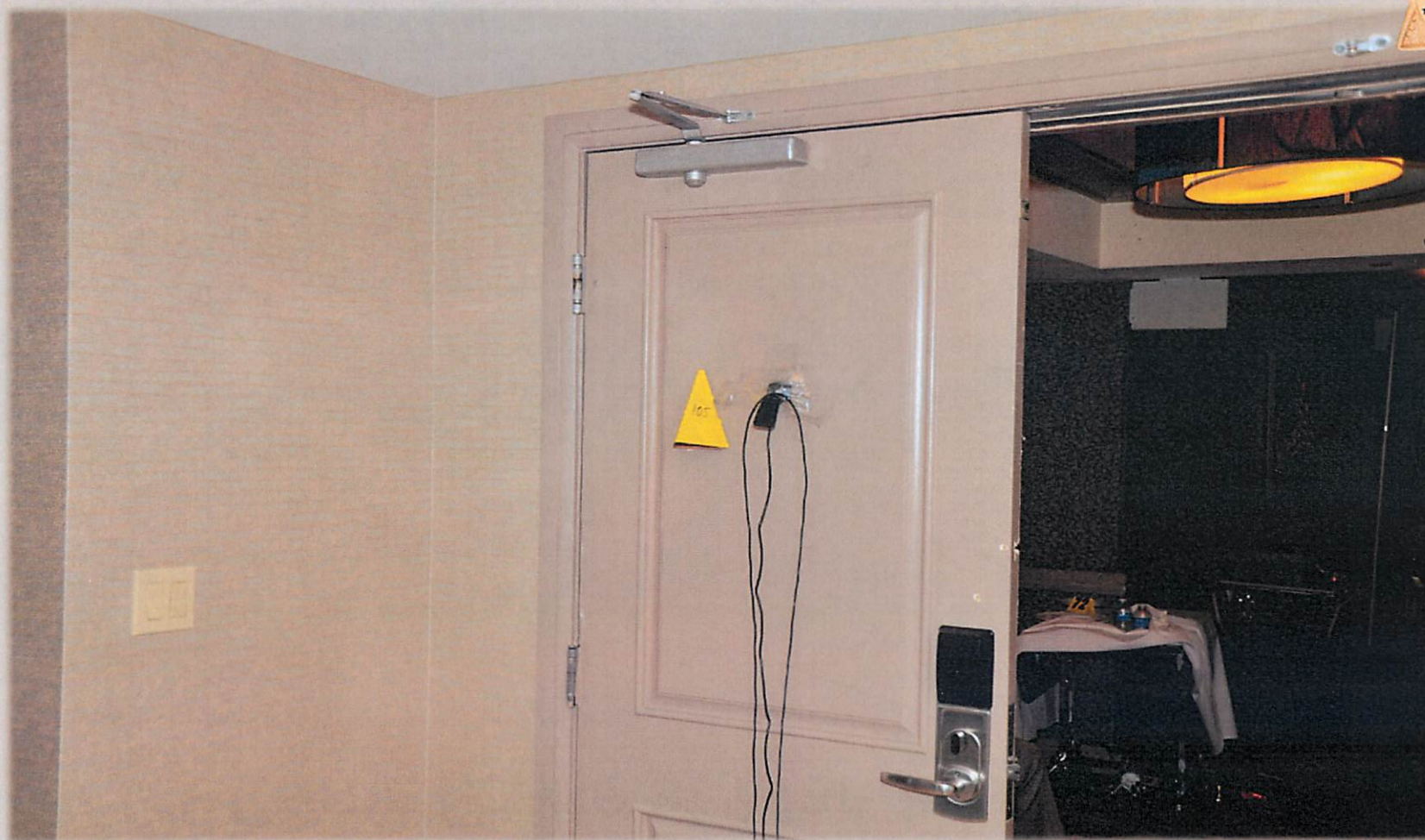
# Crime Scene at Mandalay Bay







# Looking out of Suite 32-135







## Suite 32-134







## In the suites at Mandalay Bay



- The following items were located within the two suites occupied by the killer:
  - 14 AR15s with bump stocks.
  - 8 AR10s .
  - One bolt action .308 rifle.
  - S&W air weight 38 revolver
  - Approximately 1,050 spent rifle rounds and 5,000 live rounds were discovered.
  - Numerous ammo magazines were located.
  - 10 suitcases.





# Paddock's Firearm Purchases

- From 1982 – 9/2016, Paddock purchased 29 firearms. These consisted of handguns, shotguns and one rifle.
- From 10/2016 – 9/2017, he purchased over 55 firearms along with over 100 firearm related accessories. These consisted of various calibers of rifles.
- With the exception of the revolver, used to kill himself, all firearms located in the suite at the time of incident were purchased between 10/2016 – 9/2017.







# Lengthy and Complicated Investigation



- Search of computer revealed many things to include:
  - Google searches for “summer concerts 2017”, “La Jolla Beach”, “how crowded does Santa Monica Beach get”, “biggest open air concert venues in USA”, “Las Vegas high-rise rentals”, “SWAT Las Vegas”, “do police use explosives”, “Life is Beautiful”, “How high is Mandalay Bay”, “ballistics chart 308” and many others.
  - Google map searches for Fenway Park and Venice Beach.
  - Several hundred images of child pornography.





# Motive



- No known motive as to "why".
- Paddock acted alone.
- No manifesto or suicide note was found. The only note found in the room indicated measurements and distances related to the use of rifles.
- No radicalization or ideology found. ISIS claims were unfounded.
- All weapons were purchased legally.
- No crimes were committed by Paddock leading up to the mass shooting.





# Route 91



- Venue site is located on the southern end of the Las Vegas “Strip”.
- It is 17.5 acres in size.
- Used for multiple outdoor events.















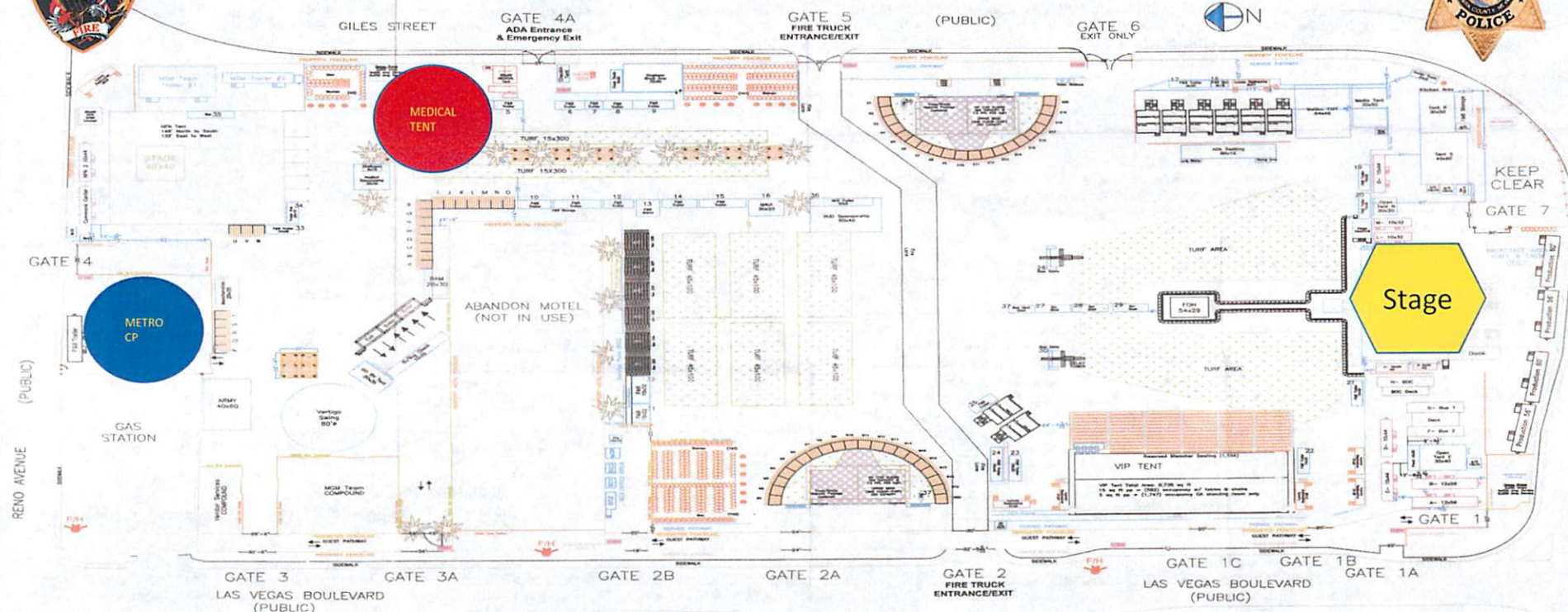


# INSIDE THE VENUE



Reuters





NOT TO SCALE

**Route 91  
Harvest Festival**  
09/29/17 - 10/01/17

#### REVISIONS

Original Draft 05/17/17 MC  
RevD General Changes 08/28/17 MC  
RevD2 General Changes 08/29/17 MC  
RevP General Changes 08/31/17 MC

**LAS VEGAS  
VILLAGE**

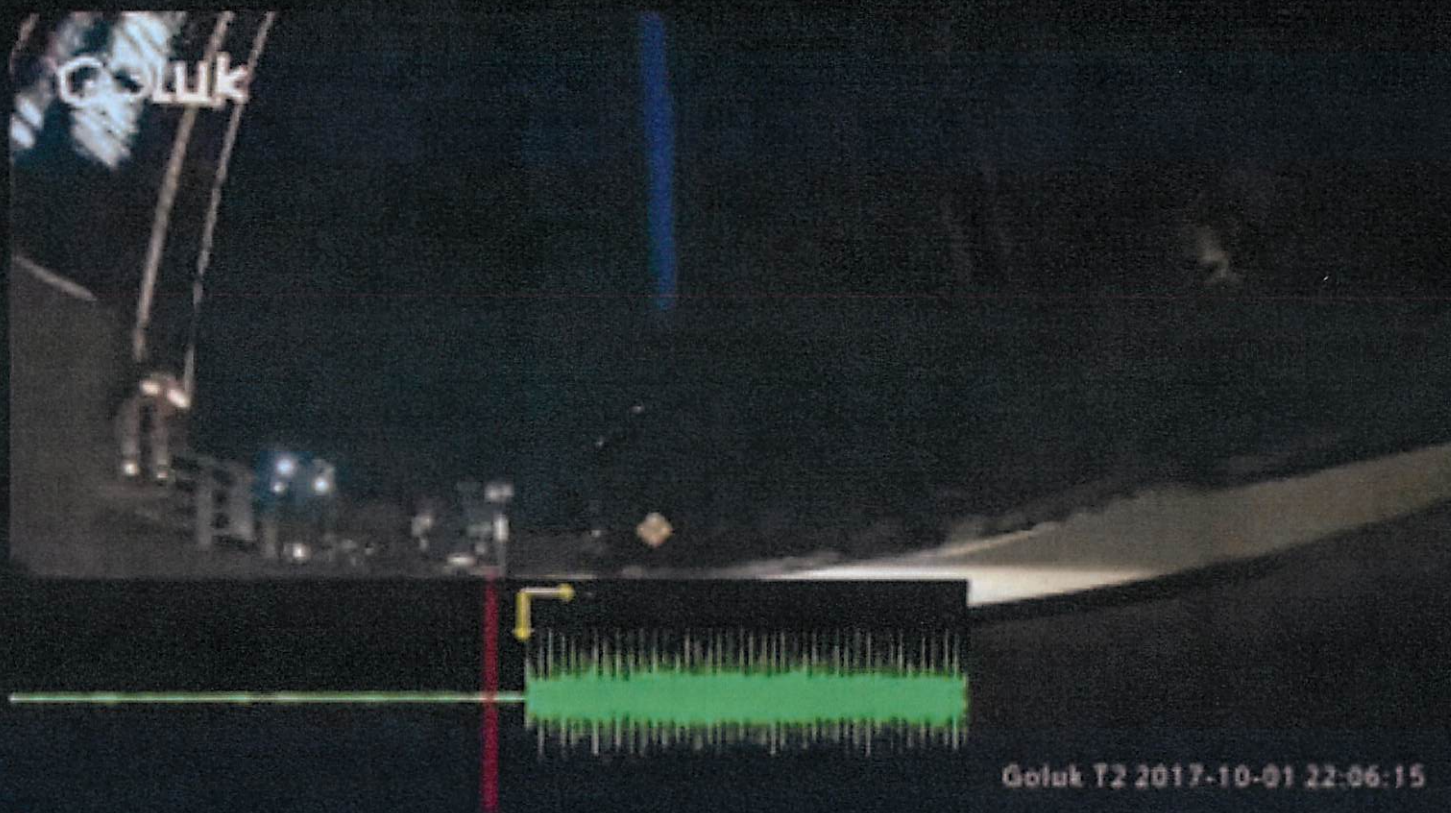
#### LEGEND

Light Towers  
Fire Hydrants  
Venus Power Source

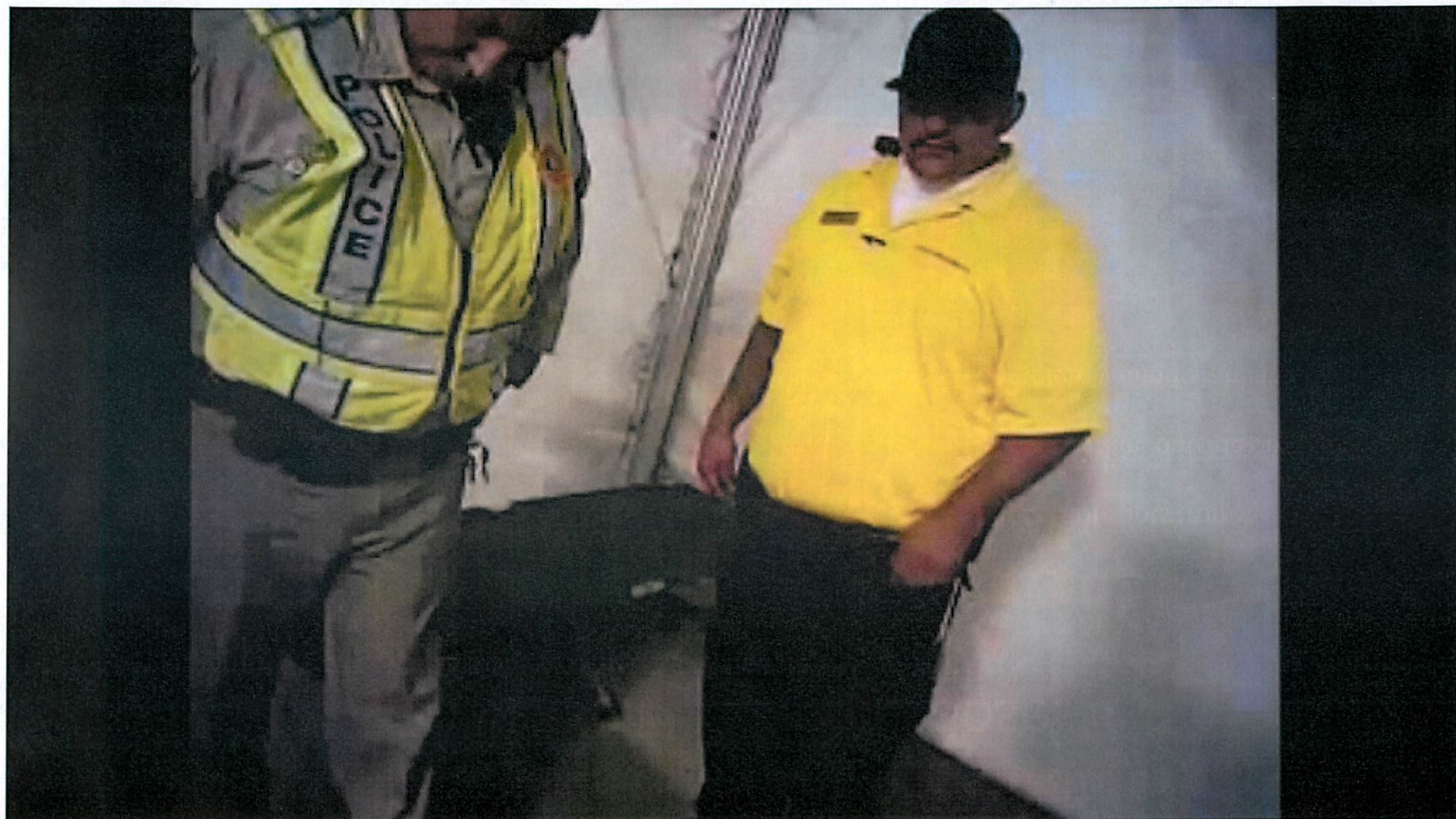
MGM RESORTS  
INTERNATIONAL  
OUTDOOR VENUES  
ENTERTAINMENT  
DEPARTMENT

Check Venue map for  
existing and future  
venues and  
the MGM Resorts logo













# Initial Response - Radio Traffic All Hell Breaking Loose.

- LVMPD Officer's broadcast initial radio traffic of "shots fired".

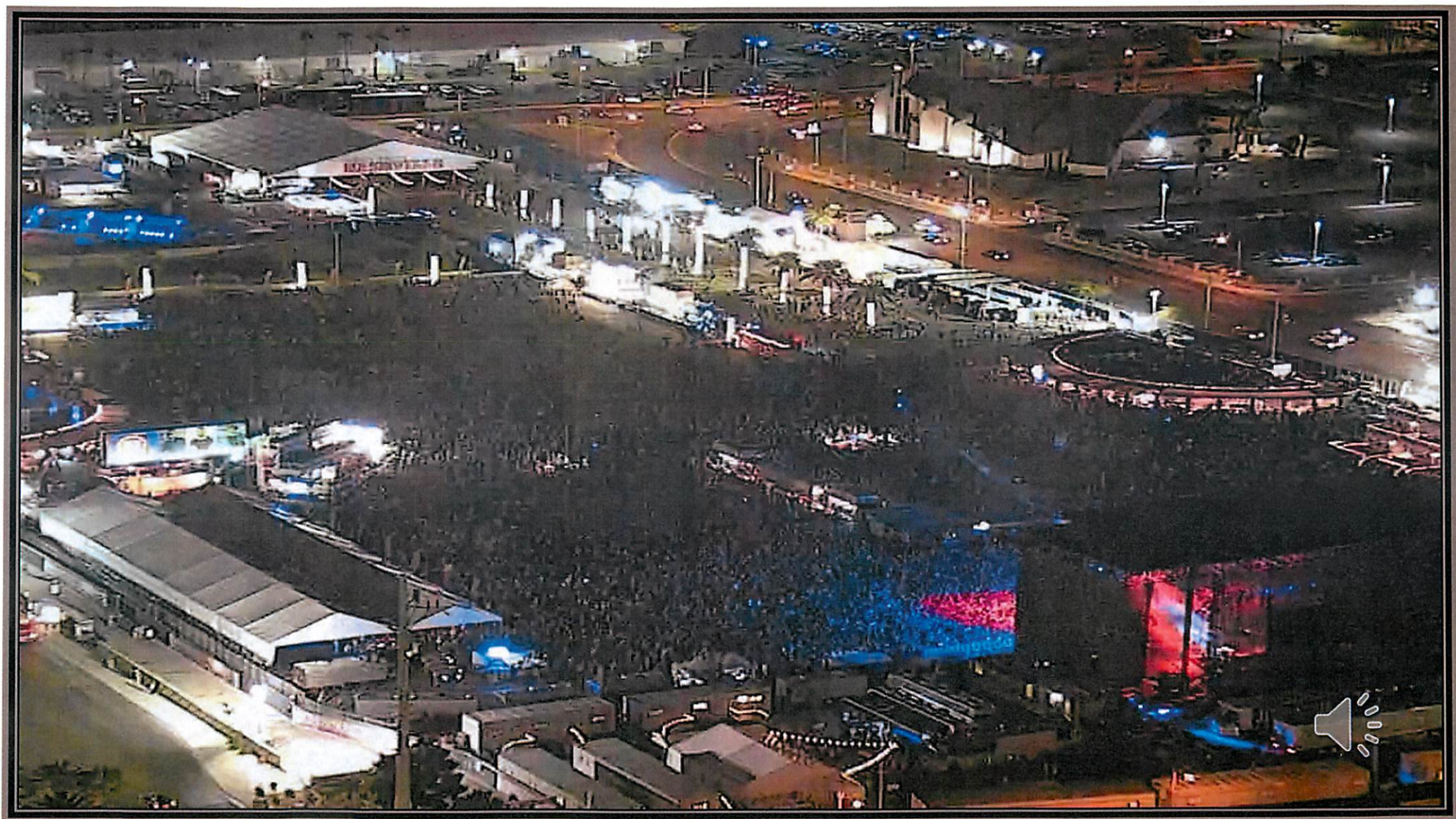


Reports of shots from:

Above, within, outside on the street,

Completely understandable.....







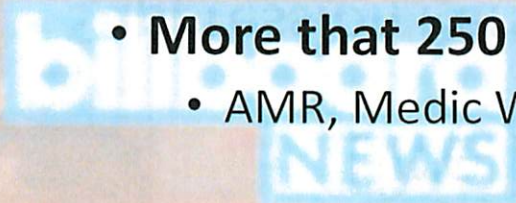






# Route 91 Casualty Statistics

- **More than 869 injured:**
  - California, Arizona, Texas
- **More than 413 people shot:**
  - Over 500 total gun shot wounds.
- **58 people killed:**
  - All deaths resulted from GSW.
- **13 area hospitals saw patients.**
  - GSW, trample injuries, fractures, sprains/strains, asthma etc.
- **More that 250 patients transported by EMS:**
  - AMR, Medic West, Community, LVFR







# Fire Response – Units/Personnel



- **Suppression Personnel (Valley Wide)**
  - 15 Engine companies.
  - 3 Truck companies.
  - 26 Rescues. (2-person ALS Ambulance)
  - 1 Squad. (2-Person ALS unit)
  - 7 Battalion Chiefs.
  - 2 EMS Supervisors.
  - 1 Mass Casualty Incident unit.
  - 1 Air Resource / Rehab unit.
  - 11 Chief Officers /C-Staff.
  - 161 valley wide FD personnel:
    - CCFD (81 suppression personnel/1 EMS Sup./8 C-Staff) 90 total.





# Challenges for responders.

- Victim egress
- Distraction calls.



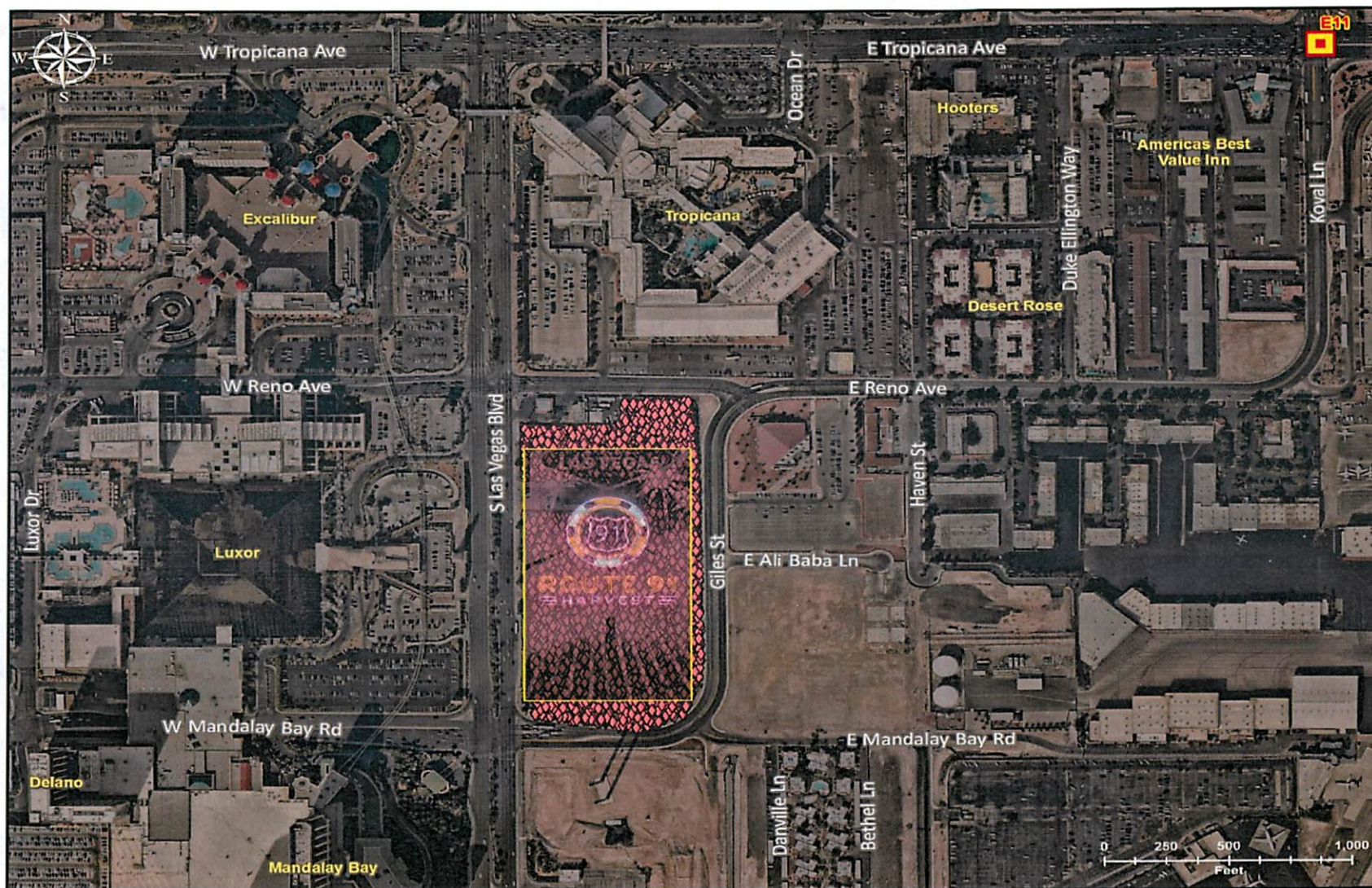




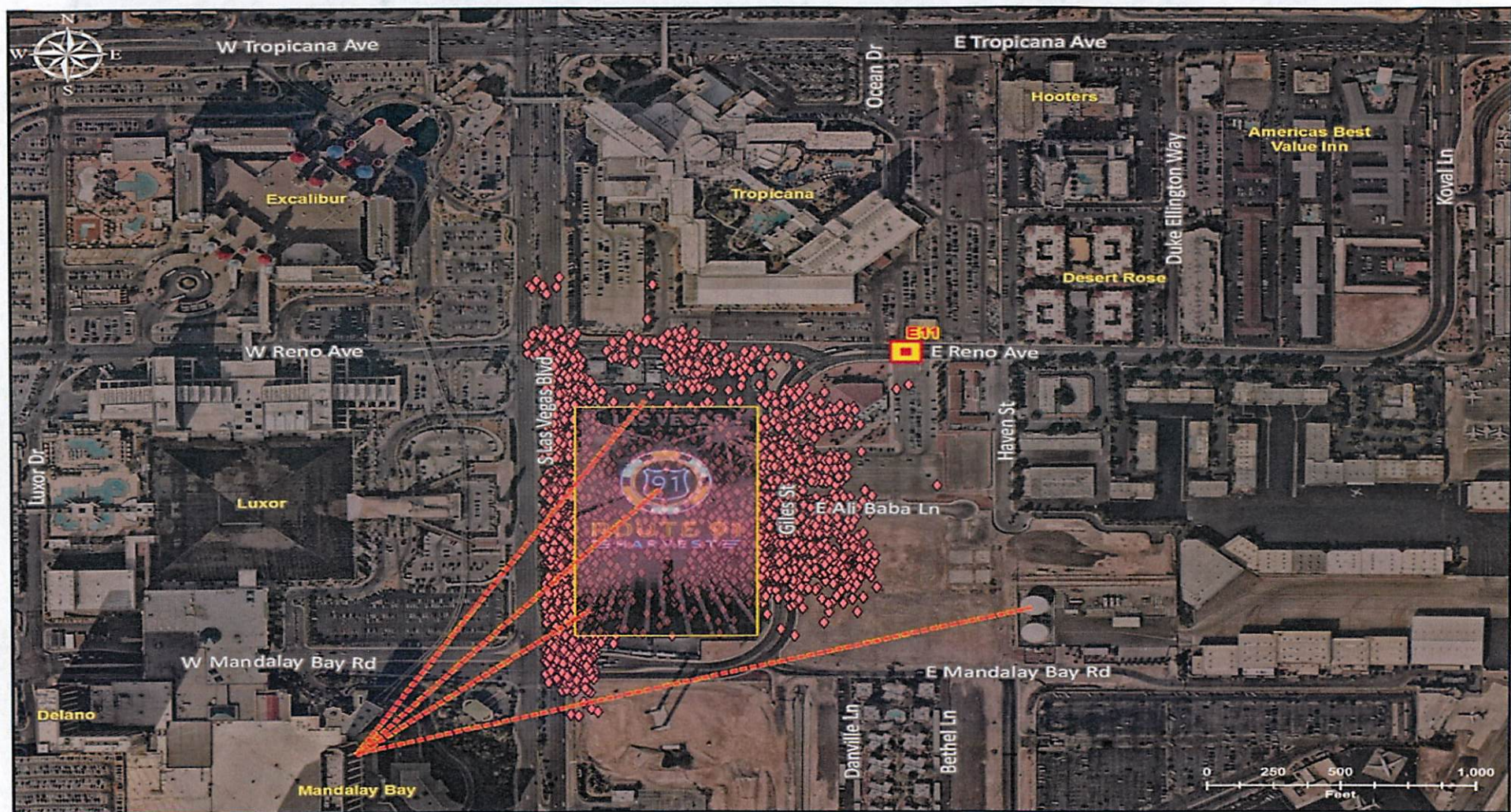
# Victim Egress

- What began as a tragic event on 17.5 acres quickly expanded to a scene greater than 3.5 square miles.
- **Victim Egress.**
  - In every direction.
  - Inbound crews met with critical patients.
  - Later arriving crews unable to make their way to some assigned areas because they would come across patients.
    - E-32 radio traffic:

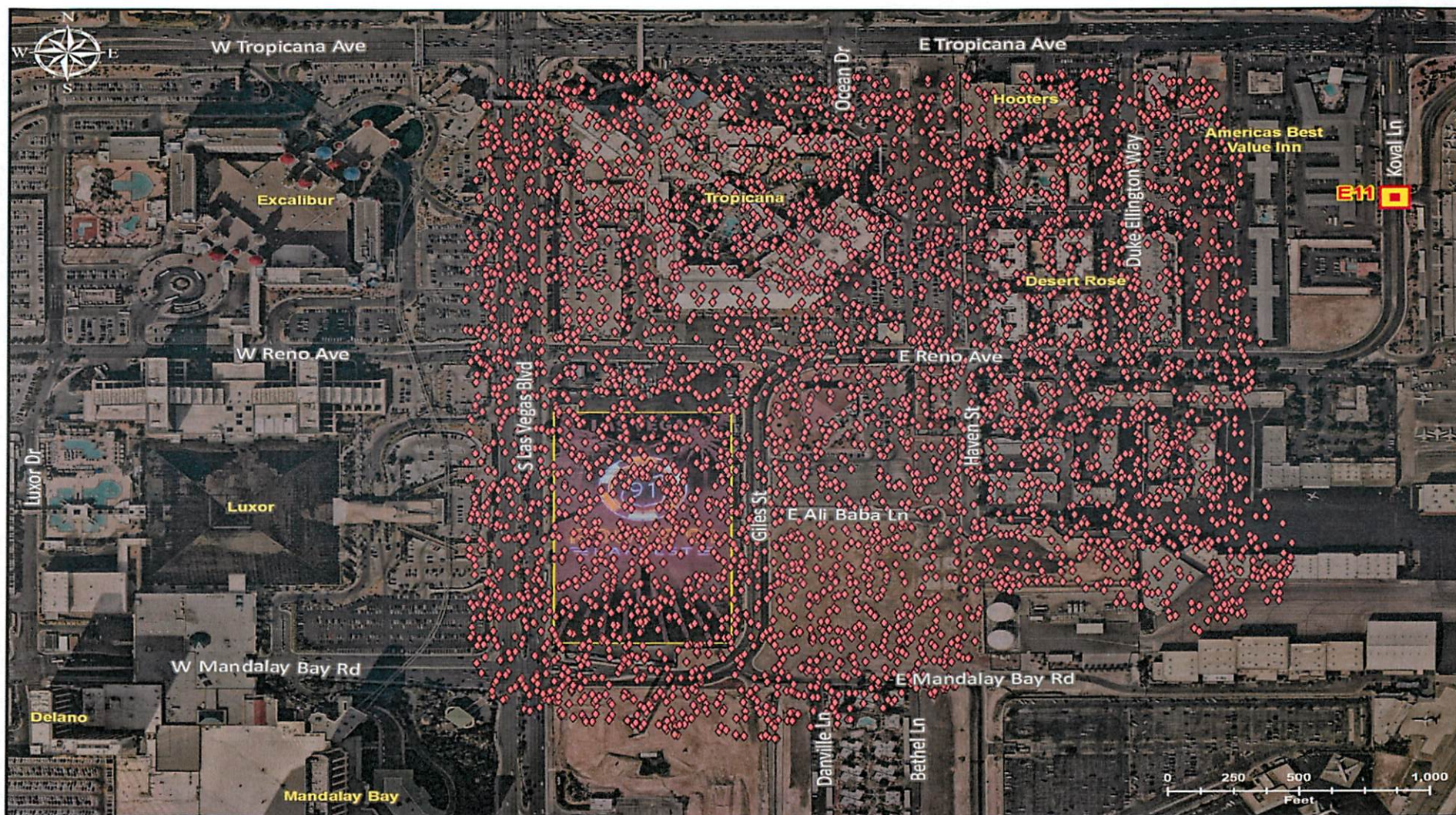




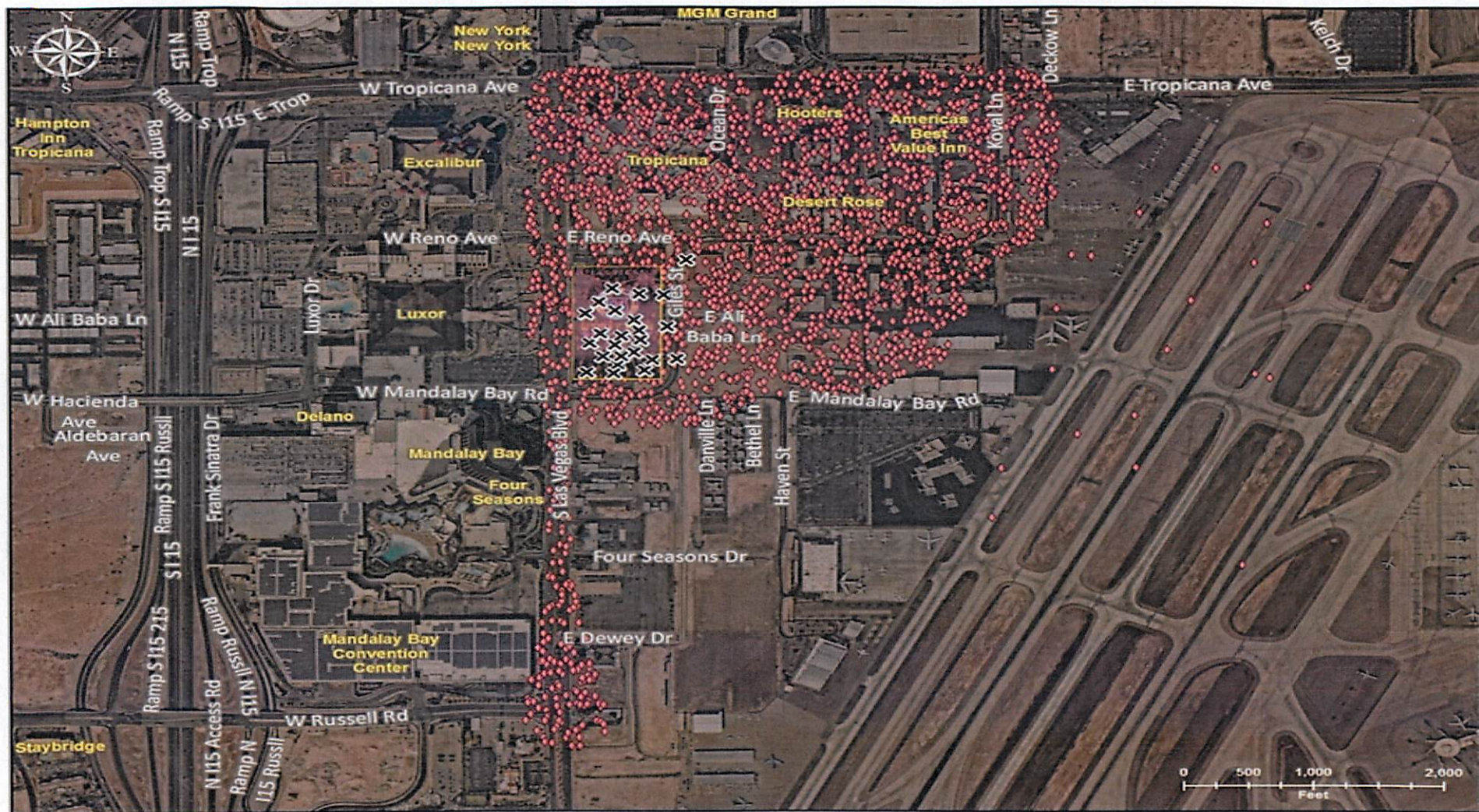














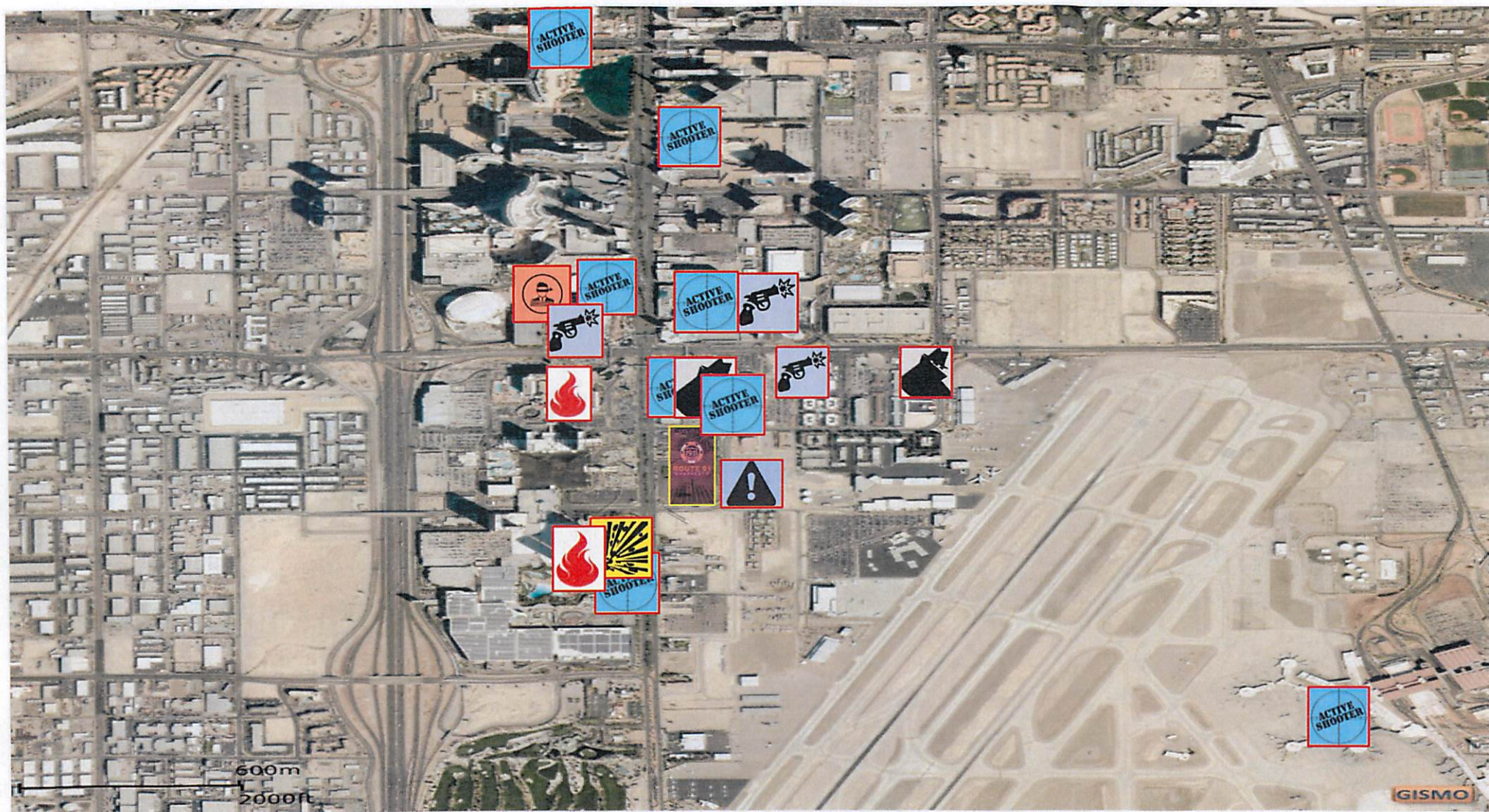


# Distraction Calls

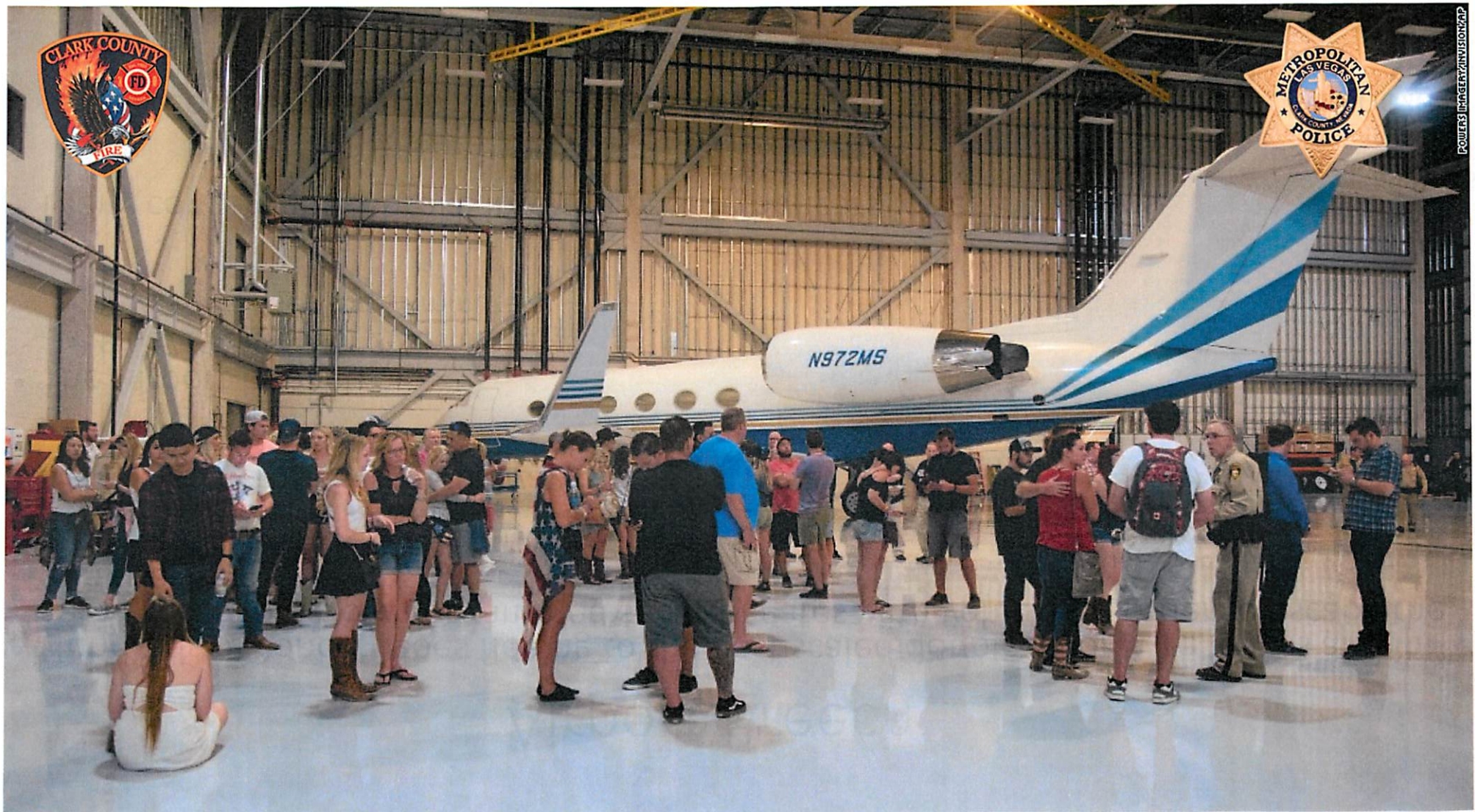


- Pandemonium sets in.
- 911 calls come in from multiple locations.
- Some more than 2 miles away from the venue.
- As responders we react.













# Airport Breech

- Hundreds of concert goers fleeing to the east scaled double razor wire fences and in some cases tore down or rammed security gates with vehicles in order to escape the gun fire.
- Many fled across active runways.
- The Airport impact:
  - RW1/19 closed for 2:56 minutes.
  - RW 26/8 closed for 35 minutes.
- Many concert goers broke into the private hangars for corporations.
- In true Cowboy Fashion....when access to the plane existed, they drank all the booze on the plane.





# Lessons Learned



- There are many things we learned from this event.
- Here are two that I want to mention to this group:
  - Family Assistance Center
  - Hospital Area Command.

Route 91  
Las Vegas  
702-735-1000

Lasino Strike  
24. Remane  
372-2401

Coroner  
702-735-1000

SLS 1001  
Circus 1001  
Encore 1001  
Vince 1001  
Palatka 1001  
Trenton 1001  
T/M 1001  
Cassidy 1001  
Harrington 1001  
Pamphlet 1001  
Monte Carlo 1001  
NYNY 1001  
Bellagio 1001  
Cosmo 1001  
Vulcan 1001  
Aria 1001  
MGM 1001  
Trump 1001  
Luxor 1001  
Mandalay 1001

TC32 Sgt. Gray 813-5304  
TC26 Sgt. J. J. 1001  
TC22 Sgt. Campbell 813-6189

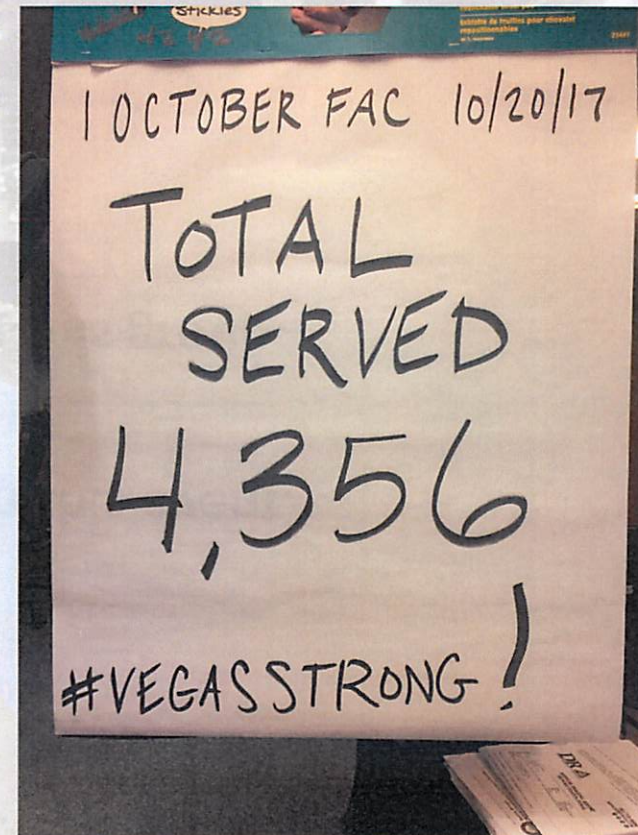




# FAC transition to Resiliency Center



- Not exactly germane to this presentation.....
- But if your jurisdiction does not have a plan for a Family Assistance Center you need to do so.











# The “Ins and Outs” of fairground events.







# Our challenge for future events: Venue Exiting

- By code: 1029.6.3 Open-air assembly seating. (2018 IFC)
  - In *open-air assembly seating*, the required capacity in inches of *aisles* shall not be less than the total *occupant load* served by the egress element multiplied by 0.08 where egress is by steeped *aisle* and multiplied by 0.06 where egress is by level *aisles* and ramped *aisles*.
    - *Outdoor event with level exiting:  $12 / 0.06 = 200$  people per linear foot.*
    - *Outdoor event with stepped egress:  $12 / 0.08 = 150$  people per linear foot.*
    - *Indoor event with level egress:  $12 / 0.15 = 80$  people per linear foot.*
- Our codes are assuming that a fire is what is placing people in danger.
- We can't stop "crazy" but we should acknowledge the challenge that "crazy" brings to our industry in regards to venues, especially outdoor festivals.





## Stats for this venue on the night of the shooting:

- 17.5 acres
- 22,000 attendees
- Roughly 1,200 employees
- Using the formula for *Indoor Event with level egress*:
  - Required:  $12 / 0.15 = 80$  people per linear foot.
  - 23,200 people in the venue / 80 = **290** linear feet of egress.
    - Fortunately we exceeded this number by about 30 linear feet. (Media call)
- For this event had the outdoor assembly seating formula been used:
  - 23,200 people in the venue / 200 = **116** linear feet of egress. (60% reduction)





## What now?

- Any Suggestions?
- NFPA 101, 12.4.1 *Life Safety Evaluations* provides some guidance but it is has fire as the most likely threat.
  - A 12.4.1.1 does identify factors to consider in developing a “Life Safety Evaluation”.
- We are conversing with FP&C with the goal of trouble shooting this for not only Clark County, but the country as well.
- UK has a several decade old publication that exists regarding outdoor venues and crowd movement in various situations. We are looking at it but it is obviously in need of an update too.





# Challenge to the industry that develops recommendations on Life Safety.

- As I already admitted I am not a code guy!
  - I am the guy who had an experience that I wouldn't wish on anyone.
- I feel it is imperative that the egress from outdoor events like this becomes a topic for consideration in future code conversations.
- I have no idea what this recommendation will look like.
  - But I know that today I am addressing the industry's best in code development.
  - Like the solid work done in preventing the loss of life from fire I am confident that this group can develop codes that will address our newest life safety reality.



A nighttime photograph of the Las Vegas Strip. The Eiffel Tower replica is brightly lit in the background. To the left, the Flamingo sign is visible. The street is filled with cars and other lights. The hashtag #LasVegasStrong is overlaid in the center.

#LasVegasStrong





# Thank You For Attending

