

405.3.1

Clearance of Plumbing Fixtures to Obstructions


CHANGE TYPE: Clarification

CHANGE SUMMARY: The minimum distances from a fixture's centerline to other fixtures or obstructions is clarified.

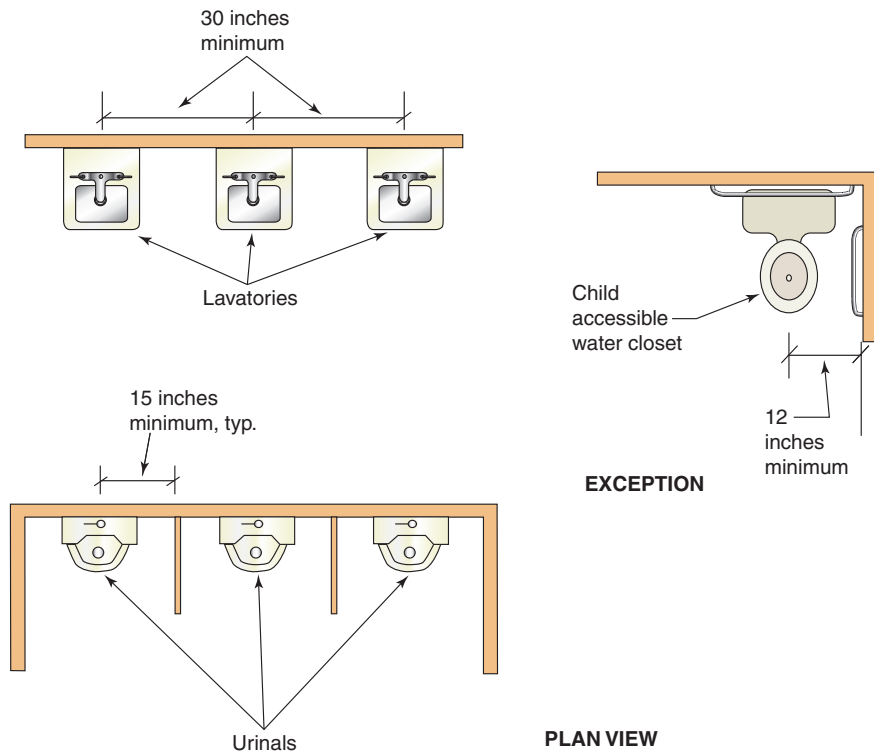
2018 CODE: **405.3.1 Water closets, urinals, lavatories and bidets.** A water closet, urinal, lavatory or bidet shall not be set closer than 15 inches (381 mm) from its center to any side wall, partition, vanity or other obstruction. Where partitions or other obstructions do not separate adjacent fixtures, or fixtures shall not be set closer than 30 inches (762 mm) center to center between adjacent fixtures. There shall be not less than a 21-inch (533 mm) clearance in front of the a water closet, urinal, lavatory or bidet to any wall, fixture or door. Water closet compartments shall be not less than 30 inches (762 mm) in width and not less than 60 inches (1524 mm) in depth for floor-mounted water closets and not less than 30 inches (762 mm) in width and 56 inches (1422 mm) in depth for wall-hung water closets.

Exception: An accessible children's water closet shall be set not closer than 12 inches (305 mm) from its center to the required partition or to the wall on one side.

CHANGE SIGNIFICANCE: The first change in the section simply breaks up a long sentence to clarify the requirements. The new exception recognizes that for accessible children's water closets, the minimum distance allowed by this section must be decreased. Standard A117.1 allows the location of such water closets to be as close as 12 inches from their center to a wall or partition.



This excerpt is taken from *Significant Changes to the International Plumbing Code®, International Mechanical Code®, International Fuel Gas Code®, 2018 Edition*. Significant Changes publications take you directly to the most important changes that impact projects. Key changes are identified then followed by in-depth discussion of how the change affects real-world application. Photos, tables and illustrations are included to further clarify application. Available for the IBC, IRC, IFC and IPC/IMC/IFGC, the Significant Changes publications are very useful training and review tools for transitioning to a new code edition.



Minimum fixture clearances