

You Should Know

Definition for consideration (see Glossary):

- Common vent ●

VENTING METHODS

Common Vent

Common venting is just a simple method of allowing an individual vent to serve as the vent for two fixtures. The two fixtures must be located on the same floor level and can be connected to the drain and vent at the same level or at different levels (Figure 6-15). When connected at different levels, the size of the pipe between the two fixture drain connections shall be sized per IPC Table 911.3 (Table 6-2). [Ref. IPC 911 and IRC P3107]

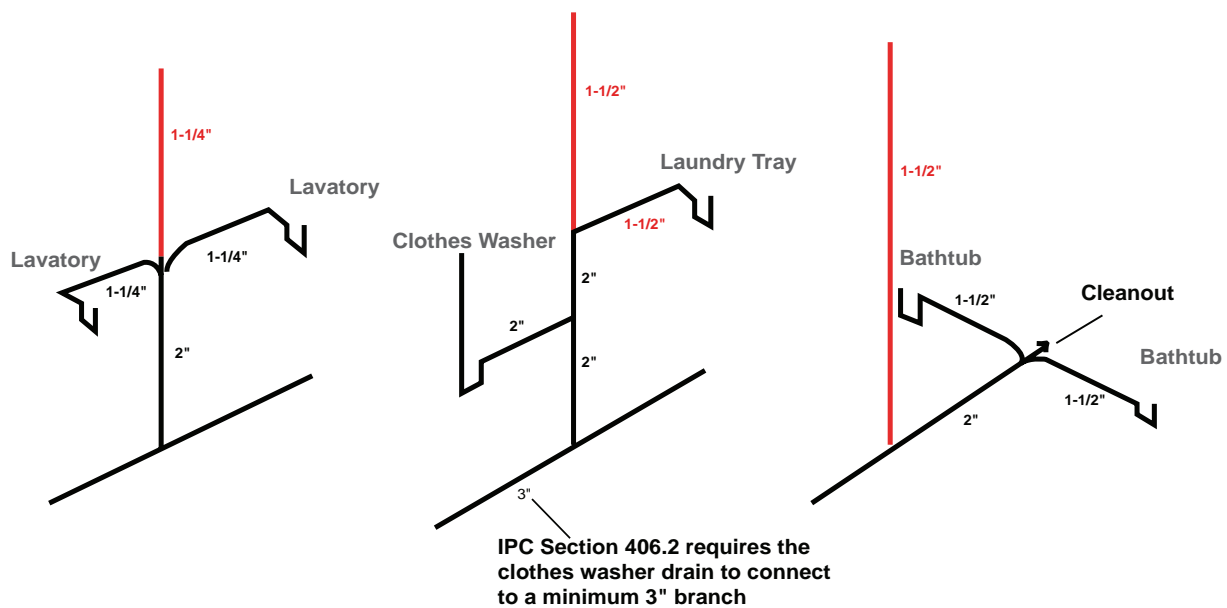


FIGURE 6-15 Common vent

You Should Know

Wet venting systems where the drain also serves as the vent is considered by many in the plumbing industry to be one of the best designs for plumbing systems due to its self-scouring function. It also can result in a reduction in cost of materials and labor. ●

TABLE 6-2 Common vent sizes (based on IPC Table 911.3)

Pipe size (inches)	Maximum discharge from upper fixture drain (dfu)
1½	1
2	4
2½ to 3	6

For SI: 1 inch = 25.4 mm.