

1006.3

Egress from Occupied Roofs

CHANGE TYPE: Modification

CHANGE SUMMARY: The means of egress provisions applicable to occupied roofs have been clarified.

2021 CODE TEXT: 1006.3 Egress from stories or occupied roofs.

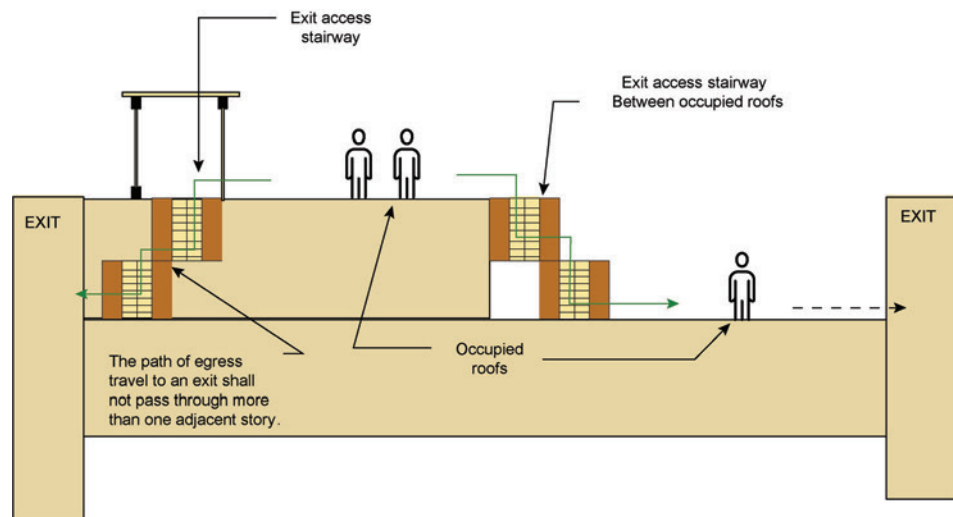
The means of egress system serving any story or occupied roof shall be provided with the number of separate and distinct exits or access to exits based on the aggregate occupant load served in accordance with this section. ~~Where stairways serve more than one story, only the occupant load of each story considered individually shall be used in calculating the required number of exits or access to exits serving that story.~~

1006.3.1 Occupant load. ~~Where stairways serve more than one story, or more than one story and an occupied roof, only the occupant load of each story or occupied roof, considered individually, shall be used when calculating the required number of exits or access to exits serving that story.~~

~~**1006.3.1 1006.3.2 Adjacent story: Path of egress travel.**~~ The path of egress travel to an exit shall not pass through more than one adjacent story.

Exception: The path of egress travel to an exit shall be permitted to pass through more than one adjacent story in any of the following:

1. In Group R-1, R-2 or R-3 occupancies, exit access stairways and ramps connecting four stories or less serving and contained within an individual dwelling unit, sleeping unit or live/work unit.
2. Exit access stairways serving and contained within a Group R-3 congregate residence or a Group R-4 facility.
3. Exit access stairways and ramps within an atrium complying with Section 404.



Egress from occupied roofs.

- 4.3:** Exit access stairways and ramps in open parking garages that serve only the parking garage.
- 5.4:** Exit access stairways and ramps serving open-air assembly seating complying with the exit access travel distance requirements of Section ~~1029.7~~ 1030.7.
- 6.5:** Exit access stairways and ramps between the balcony, gallery or press box and the main assembly floor in occupancies such as theaters, places of religious worship, auditoriums and sports facilities.
- 7.** Exterior exit access stairways and ramps between occupied roofs.

CHANGE SIGNIFICANCE: The trend of clarifying how various code provisions should be applied to occupied roofs continues through these revisions. For years, the only code requirements specific to occupied roofs were that they meet the increased structural loading and that they needed to be provided with a means of egress in the same manner as stories; even though they did not meet the definition for being a story. This caused confusion in the application of other provisions that are now starting to be addressed.

Previously, it was clearly stated that only the occupant load of a single story was to be used for calculating the egress requirements. However, that statement began with the limitation that it applied “where stairways serve more than one story.” As an occupied roof does not meet the definition of a story, an argument could be made that a combined occupant load was intended to be used where a story and an occupied roof were the levels under consideration. Although the change may not seem significant, the simple fact that the code specifically addresses this issue should provide more consistency in application and make understanding the intent easier for code users.

The intent of Exception 3 is to recognize that, although an exit access stairway can generally serve as a portion of the required egress path for travel through only one adjacent story, it is permissible that the egress stairway be unenclosed and connect to multiple stories within an atrium. This coordinates with Exception 5 of Section 1019.3 allowing the exit access stairway to be in the atrium instead of being in a shaft enclosure. Therefore, a traditional open exit access stairway (or a convenience stairway) in an atrium may pass through multiple stories, and, based on this new exception, it could be used for travel through multiple floors before it would need to provide access to a compliant exit element. Because this is an exit access stairway, the travel distance would be limited by both the general requirements of Section 1017 as well as the limits applicable to atriums as established in Section 1017.3.2.

Since an occupied roof does not qualify as a story, the new Exception 7 is simply providing guidance regarding exit access stairways that serve or connect to occupied roofs and allowing a connection to adjacent roof levels. This exception addresses that vertical travel connecting occupied roofs may be provided by exterior exit access stairways, permitted to be unenclosed while serving as a part of the required egress path. Where the egress travel is “between occupied roofs,” as stated in Exception 7, travel is permitted to more than one level; however, if the egress is from an enclosed story, the egress path is only permitted to pass through one adjacent story.



This excerpt is taken from *Significant Changes to the International Building Code®, 2021 Edition*.

The Significant Changes series takes you directly to the most important changes that impact projects.

Key changes are identified then followed by in-depth discussion of how the change affects real-world application. Photos, tables and illustrations are included to further clarify application.

Available for the IBC, IRC, IFC, IECC and IPC/IMC/IFGC, the Significant Changes publications are very useful training and review tools for transitioning to a new code edition.