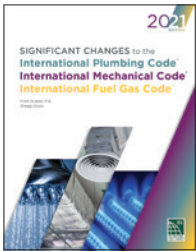


# 202

## Definition of Public and Private

This excerpt is taken from **Significant Changes to the International Plumbing/Mechanical/Fuel Gas Codes, 2021 Edition.**



The Significant Changes series takes you directly to the most important changes that impact projects.

Key changes are identified then followed by in-depth discussion of how the change affects real-world application. Photos, tables and illustrations are included to further clarify application.

Available for the IBC, IRC, IFC, IECC and IPC/IMC/IFGC, the Significant Changes publications are very useful training and review tools for transitioning to a new code edition.

**CHANGE TYPE:** Modification

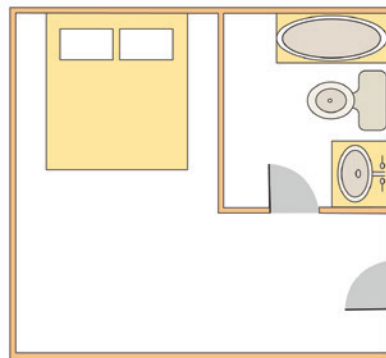
**CHANGE SUMMARY:** The definitions of “public” and “private” are simplified to make a clearer distinction as to which plumbing fixtures are intended to be configured for public use.

**2021 CODE: PUBLIC OR PUBLIC UTILIZATION.** In the classification of plumbing fixtures, “public” applies to fixtures in general toilet rooms of schools, gymnasiums, hotels, airports, bus and railroad stations, public buildings, bars, public comfort stations, office buildings, stadiums, stores, restaurants and other installations where a number of fixtures are installed so that their utilization is similarly unrestricted with unrestricted exposure to walk-in traffic.

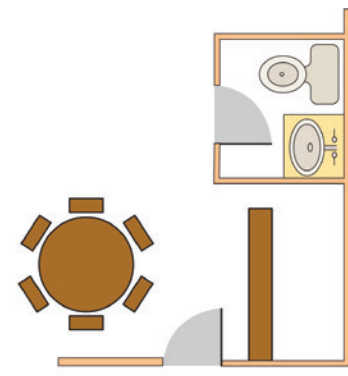
**PRIVATE.** In the classification of plumbing fixtures, “private” applies to fixtures in residences and apartments, and to fixtures in nonpublic toilet rooms of hotels and motels and similar installations in buildings where the plumbing fixtures are intended for utilization by a family or an individual that are not public.

**CHANGE SIGNIFICANCE:** The definition of “public” is aligned with that of standards ASME A112.18.1, *Plumbing Supply Fittings*, and ASHRAE 90.1, *Energy Standard for Buildings*, to minimize the number of lavatory fixture fittings (faucets) that must comply with the code’s public use requirements for 1) discharging only tempered water and 2) having a flow rate of not greater than 0.5 gpm.

Public lavatory faucets are the only plumbing fixtures required by the code to discharge tempered (between 85 and 110°F) water. The revised definitions have little, if any, impact on public lavatories. However, as the terms “public” and “private” are used throughout the code for purposes beyond identifying lavatory types, the revised definitions could give new meaning to other code sections even though the approved proposal may not have intended to change the meaning in those contexts.



Hotel room  
“private”  
plumbing fixtures



Hotel lobby  
“public”  
plumbing fixtures

International Code Council

Public versus private uses