

ICC Chapter Leadership Academy 2024

QUALITY OF LIFE AND
LEADERSHIP

INTRODUCTIONS

Presenters



Maryia Lackansingh,
Code Specialist, Senior
Commercial Plans
Examiner
Fairfax County, VA
President, Women in
Code Enforcement and
Development of VA
(WICED of VA)
Instructor, Virginia
Building Code Academy



Christina Jackson,
Senior Codes
Compliance
Inspector-Supervisor
Newport News, VA
Founding member
and Past President,
Women in Code
Enforcement &
Development of VA
(WICED of VA)
WICED Secretary
Permit Tech Nation
Board Member, VA
Building & Code
Officials Association
(VBCOA) Education
Committee Chair

A word cloud on a black background. The words are arranged in a roughly circular shape. The most prominent word is 'QUALITY OF LIFE' in large, bold, yellow-orange letters. Other large words include 'FAMILY' (top center), 'MONEY' (left), 'EMPLOYMENT' (bottom center), and 'BELIEF' (right). Smaller words include 'WEALTH', 'HEALTH', 'HAPPINESS', 'CAREFREE', 'ENJOY', 'WELL-BEING', 'ENVIRONMENT', 'EDUCATION', 'HOUSING', 'FINANCE', 'EVERYDAY', 'FEATURE', and 'FEAR'. The words are in various shades of gray, white, and yellow.

QUALITY OF LIFE

FAMILY

MONEY

WEALTH

CAREFREE

ENJOY

HEALTH

WELL-BEING

EMPLOYMENT

HAPPINESS

BELIEF

ENVIRONMENT

EDUCATION

HOUSING

FINANCE

EVERYDAY

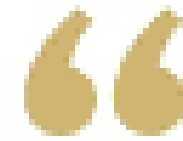
FEATURE

FEAR

The text "ICE BREAKER" is centered on a black background. The word "ICE" is positioned above "BREAKER". Behind the text is a cluster of translucent, light blue ice cubes. The text is rendered in a bold, white, sans-serif font with a slight drop shadow.

**ICE
BREAKER**

ICE BREAKER



Fill In The Blank: If You Really Knew Me, You'd Know _____.

Quality of Life

EFFORT

IMPACT

RESULTS

EFFORT



but first,

JOY

Like in the Ice
Breaker make sure
you have purposeful
engagement to get
maximum effort!



The calmer you are, the clearer you think. Move with strategy not with emotions.



MAKE



AN

IMPACT

MESSAGE

1st Power
Express yourself

MEDIA

3rd Power
Regulating attention
and intention;
Showing emotional
intelligence

COMMUNICATION

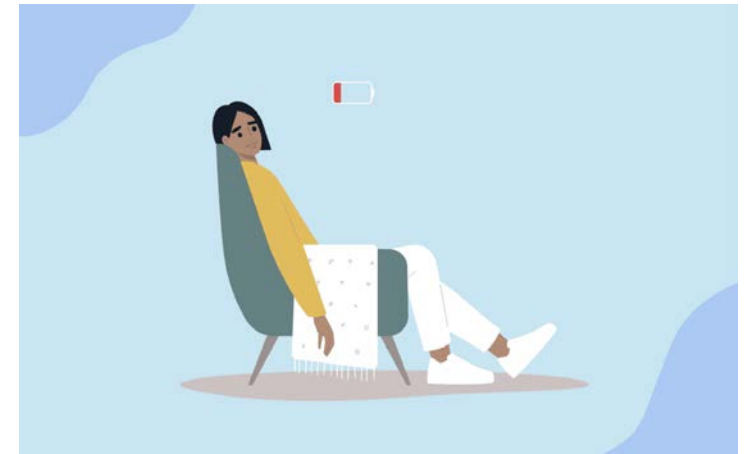
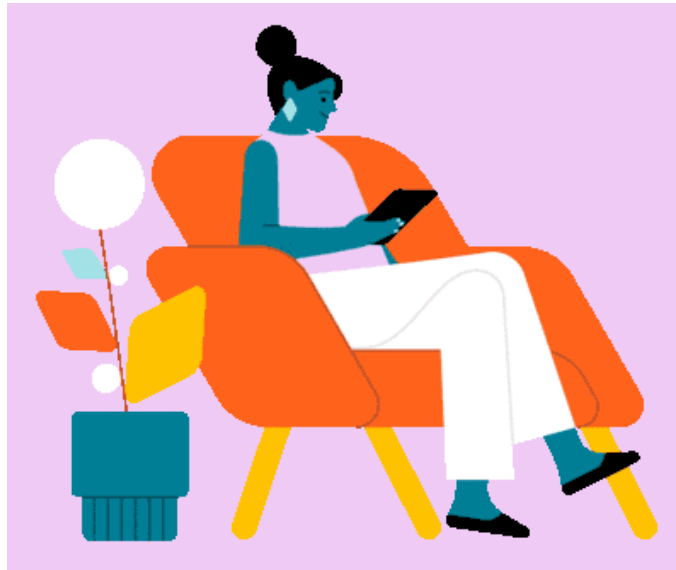
RESPONSE

2nd Power
Listening and
Responding

RECEIVER

4th Power
Understanding and
responding to people
within their frame of
reference

Expressing your organizations wants and needs



What challenges are you facing?

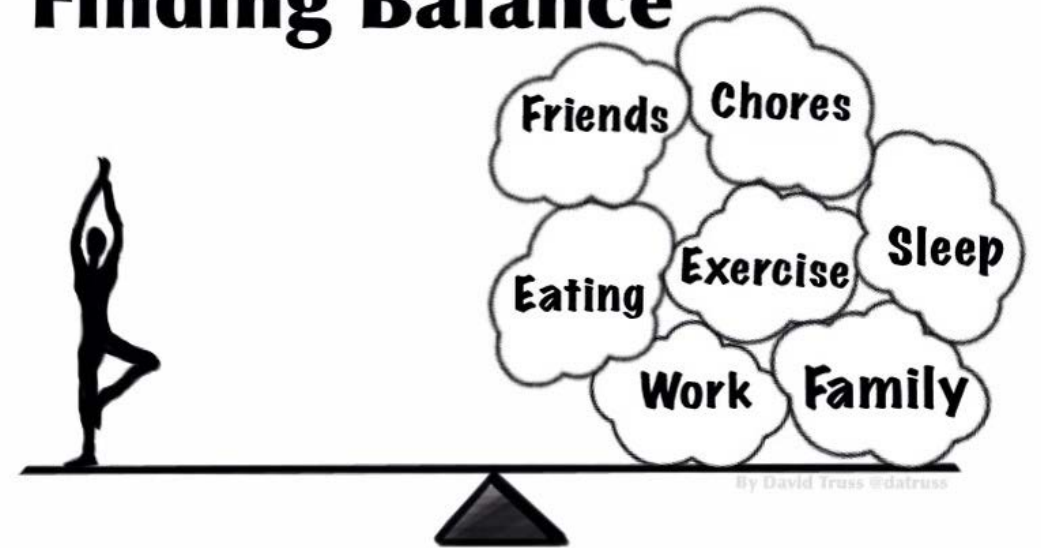
How has being a chapter leader effected your quality of life?

Do you struggle with balancing work, family, and leading your organization?

What advice have you been given that may change the perspective of someone in this room?



Finding Balance



By David Truss @datruss



Results
Just Ahead

Creativity is

thinking up new

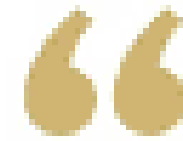
things. Innovation

is doing new things.

YOU'RE ALREADY A LEADER

when you can inspire people to believe in themselves and their potential beyond what they thought was possible.

ICE BREAKER



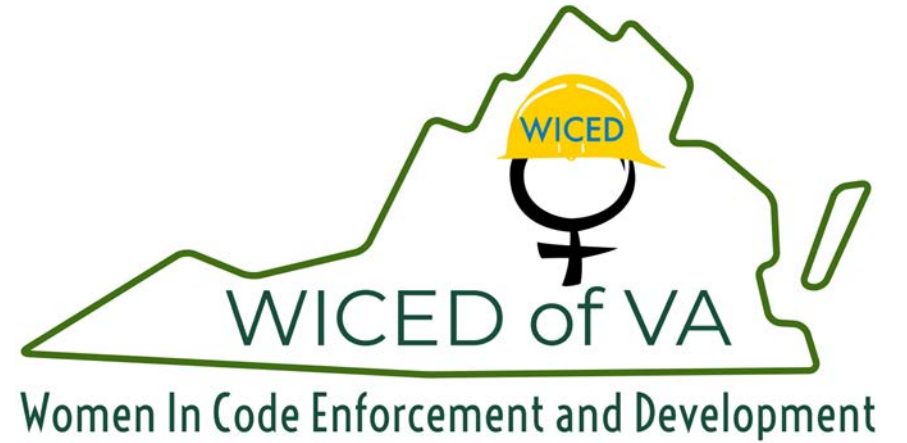
Fill In The Blank: If You Really Knew Me, You'd Know _____.

"Many people are promoted
or recruited into leadership
positions without
understanding the
fundamental philosophy
of leadership;
It's all about PEOPLE!"

Even If You're A Leader, The Little Things Still Matter!

1. Remember the names of the important people in the lives of your direct reports.
2. Remember the things they are interested in outside of work - do they love to garden? Do they volunteer? What are their weekends like?
3. Remember where they went for vacation and ask about their experience, be genuinely interested.
4. Remember their favourite food, music, their children's activities.

How do you present yourself to your team? Do parts of your personality reflect in your leadership style?



What questions do you have for us?

Thank you for participating and giving us the opportunity to present to you all today!

