



Welcome to the

2019 Annual Conference Educational Sessions



Single-User Toilet Rooms

What is your choice?

The Preview Group, Inc.
Architects providing regulatory solutions...

632 Race Street, Cincinnati, OH 45202
www.preview-group.com
513.621.2109



The Preview Group, Inc.

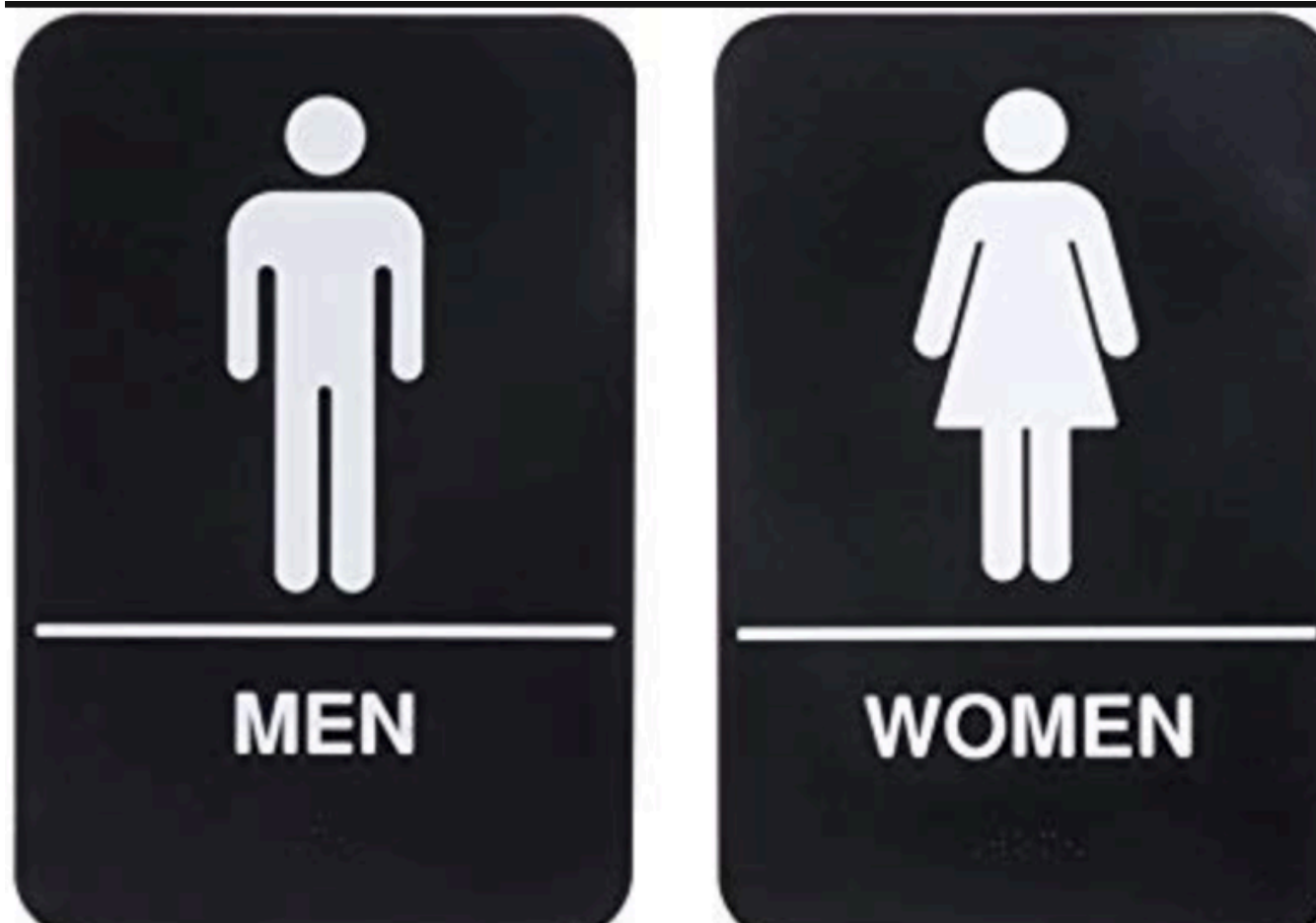
- The Preview Group is a consulting firm specializing in building regulations and application to building design.
- With over 100 years combined experience:
 - Architecture / Civil engineering
 - Accessibility
 - MEP / Energy / Green codes
 - Fire protection
 - Code development & enforcement

ALA Learning Objectives

- Attendees will review key highlights about the changes that have been made between the 2015, 2018 and 2021 editions of the IBC and IPC, and the reasons for the changes.
- Attendees will review highlights of the changes that affect building occupants and why they were necessary, and the impact on design and review.
- Attendees will better understand who decides to use this new configuration, what are the features to be aware of, what are the differences between single user stalls, multiple single user rooms and single user rooms.
- Upon completion, attendees will have an understanding of the new arrangements that are permitted by these changes.

WHY A CHOICE?

WHY A CHOICE?



WHY A CHOICE?



05 x 325

WHY A CHOICE?



WHY A CHOICE?



WHY A CHOICE?

INSERT PICTURE OF GREG AND SARAH

WHY A CHOICE?

TOILET FACILITY?

WHY A CHOICE?

TOILET FACILITY?

A room or space that
contains

...one water closet and
...one lavatory.

WHY A CHOICE?

TOILET FACILITY?

A room or space that contains
not less than one water closet
AND one lavatory.

WHY A CHOICE?

IS THIS A TOILET FACILITY?



WHY A CHOICE?

IS THIS A TOILET FACILITY?



WHY DO THEY HAVE TO CHOOSE?

INSERT PICTURE OF GREG AND SARAH

SINGLE-USER TOILET LAWS?

MASSACHUSETTS – January 2006

CALIFORNIA – August 2017

OHIO – November 2017

CHICAGO – October 2017

VERMONT – August 2018

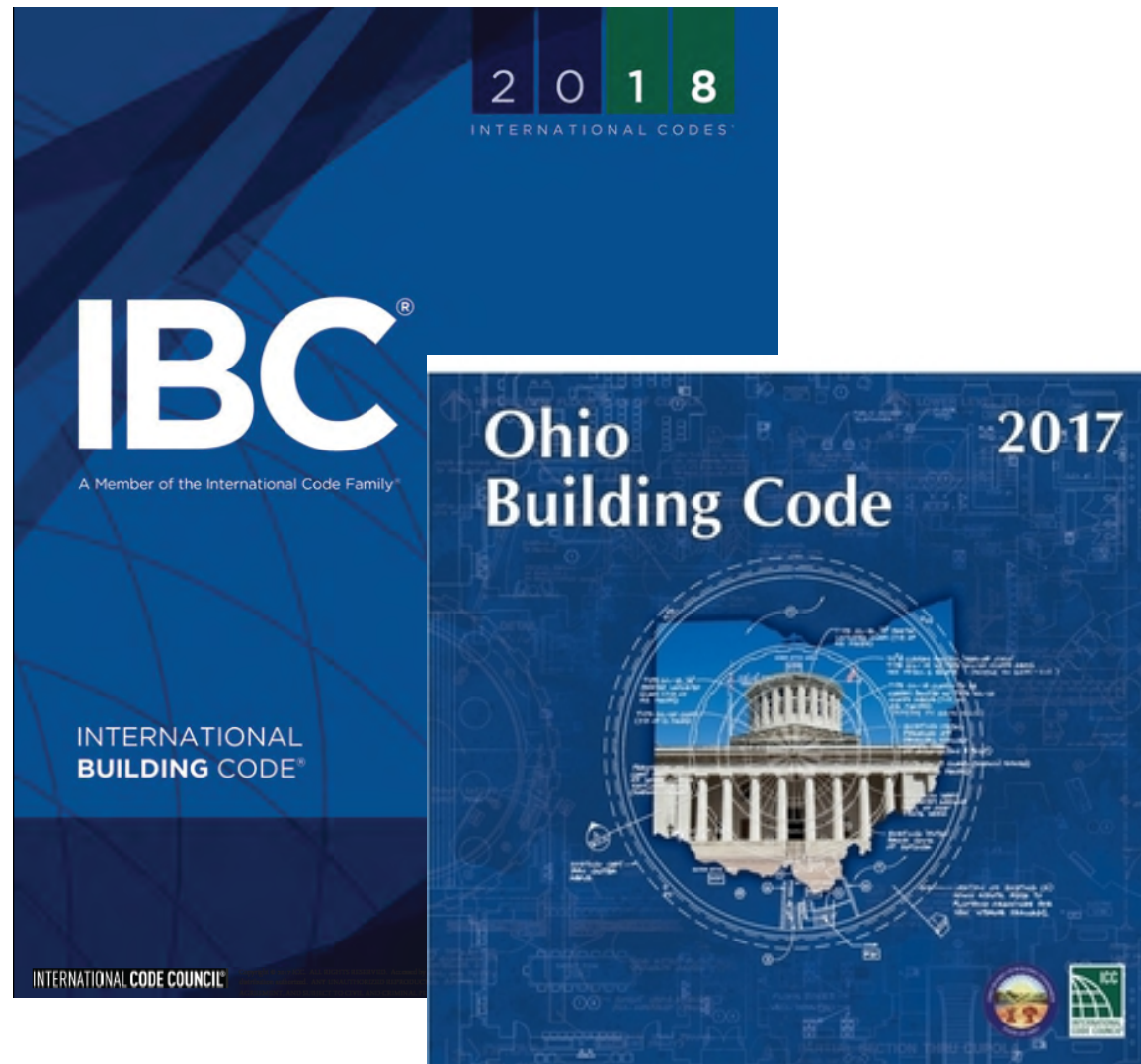
WASHINGTON, DC – December 2018

NEW MEXICO – March 2019

....



WHO MAKES THE DECISION?



WHO MAKES THE DECISION?

THE DESIGN TEAM



2015 IBC/IPC – Code Progression

[P] 2902.2 Separate facilities.
.... separate facilities shall
be provided

for each sex.

2015 IBC/IPC

[P] 2902.2 Separate facilities.
.... for each sex.

EXCEPT:

15 or fewer
M 100 or less.

2015 IBC/IPC

1109.2.1 Family or assisted-use toilet and bathing rooms.

... shall be provided

A,

M and

Recreational facilities

Permitted:

Urinal

2018 IBC/IPC – Code Progression

**[P] 2902.1.2 Single-user
toilet facility and bathing
room fixtures.**

2018 IBC/IPC – Code Progression

[P] 2902.1.2 Single-user toilet facility and bathing room fixtures.

... shall contribute toward the total number of fixtures

2018 IBC/IPC – Code Progression

[P] 2902.1.2 Single-user toilet facility and bathing room fixtures.

.... Shall contribute toward the total number of fixtures

...for use by either sex.

2018 IBC/IPC – Code Progression

[P] 2902.2 Separate facilities.
.... separate facilities shall
be provided

for each sex.

2018 IBC/IPC

[P] 2902.2 Separate facilities.

for each sex.

EXCEPT:

15 or fewer

M 100 or less

B 25 or fewer

2018 IBC/IPC

1109.2.1 Family or assisted-use toilet and bathing rooms.
... shall be provided

A, M and Rec. facilities

Permitted:

Urinal

Child-height wc

Child-height lav

2021 IBC/IPC – Code Progression

[P] 2902.2 Separate facilities.
.... separate facilities shall
be provided

for each sex.

2021 IBC/IPC

P14-18 AS

P15-18 AM

P16-18 AS

2018 IBC/IPC

P14-18 AS

Insert text from 2018 IPC/IBC – 403.1.1

2021 IBC/IPC

P15-18 AM

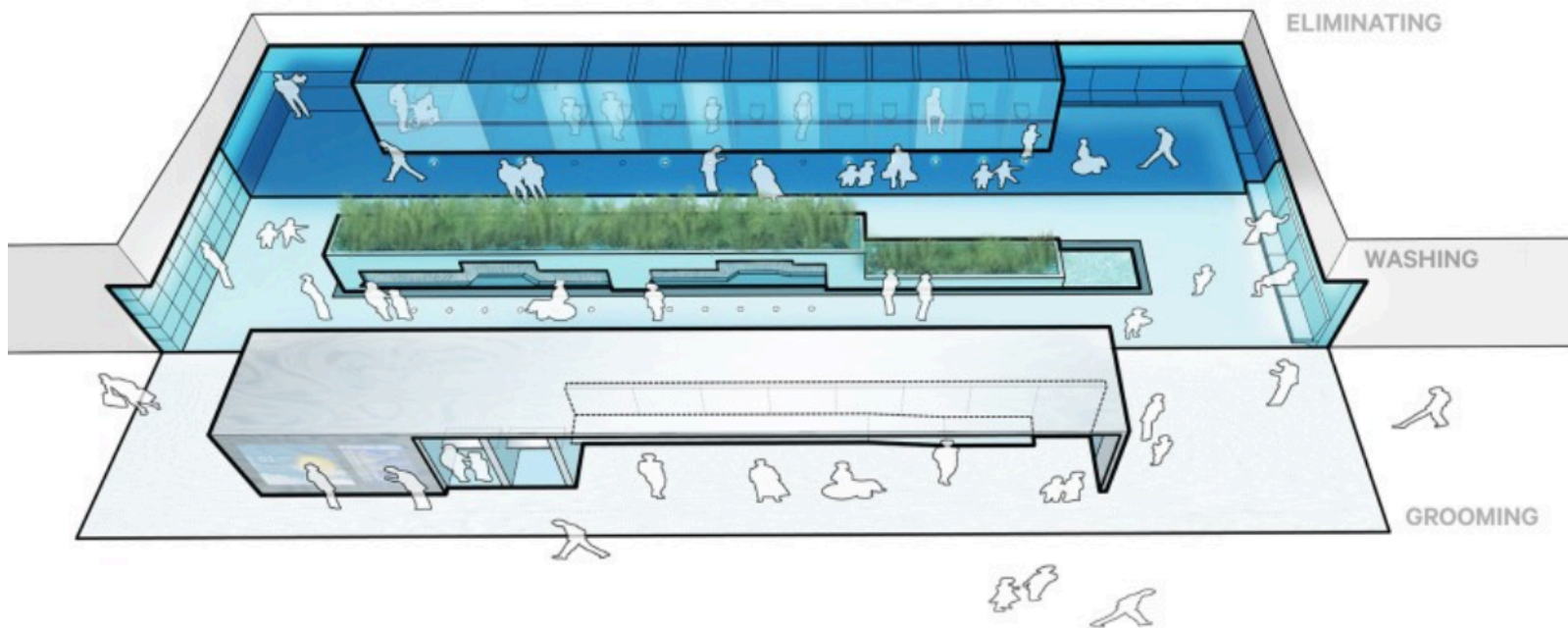
Insert text from 2018 IPC/IBC – 403.1.2 and 403.2

2021 IBC/IPC

P16-18 AS

Insert text from 2018 IPC/IBC – 403.1.2

2021 IBC/IPC

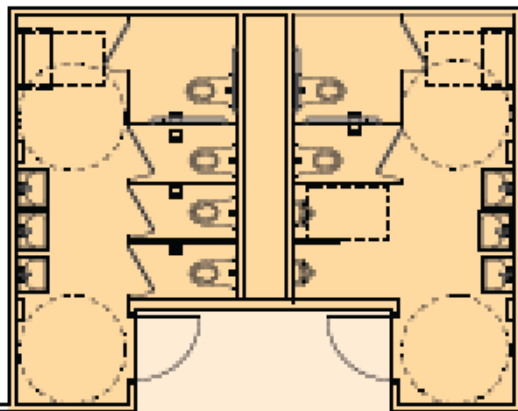


Credit: Joel Sanders Architect
Architect Magazine – September 30, 2017

2001 IBC/IBC

8 FIXTURE LAYOUT

BASED ON 350 PERSON BUSINESS OCCUPANCY
OR 200 - 240 PERSON EDUCATIONAL OCCUPANCY



TRADITIONAL , SEPARATED BATHROOMS
(per NCBC 2902.2, Table 2902.1, and 2010 ADA)

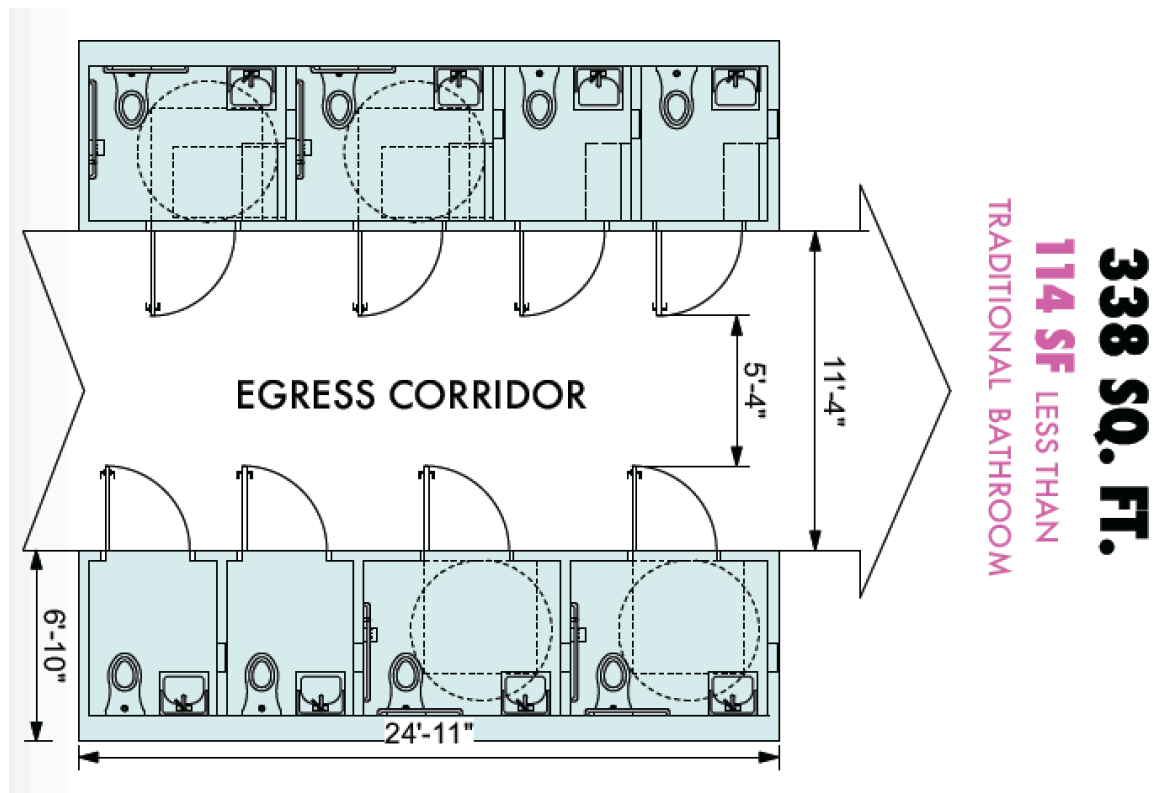
452 SQ. FT. (w/ entry)

2 Wheelchair accessible stalls
2 Accessible sinks

SINGLE USER TOILET ROOMS

(per NCBC 2902.2, Table 2902.1, and 2010 ADA)

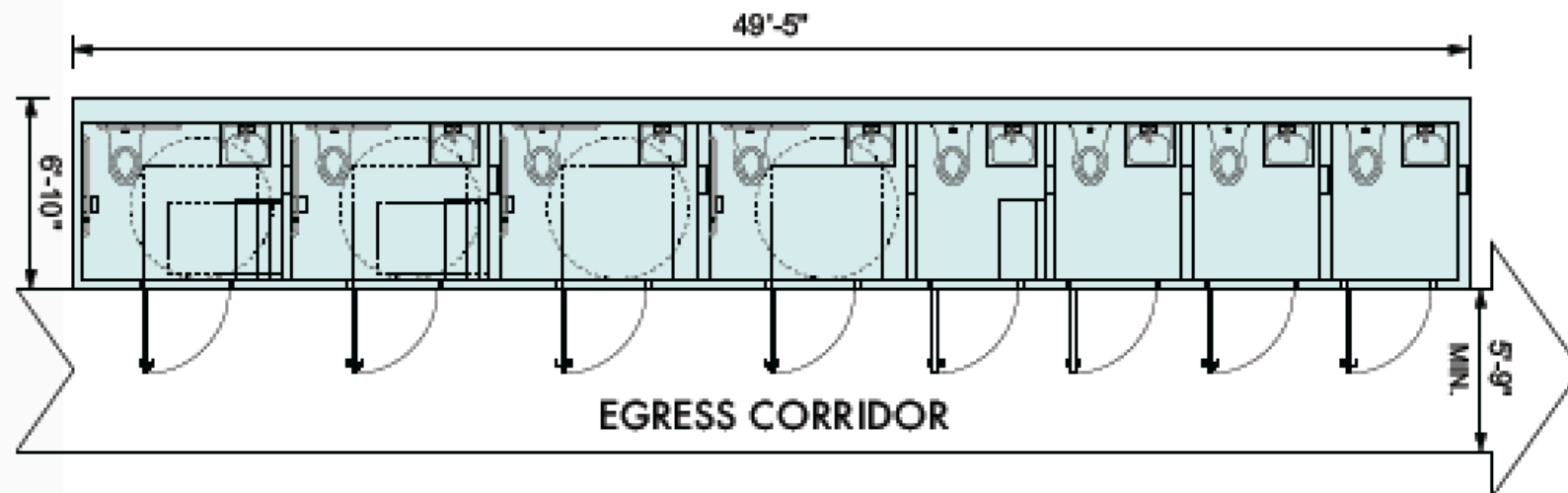
50% OF ROOMS ARE ACCESSIBLE PER NCBC 1109.2



SINGLE USER TOILET ROOMS

(per NCBC 2902.2, Table 2902.1, and 2010 ADA)

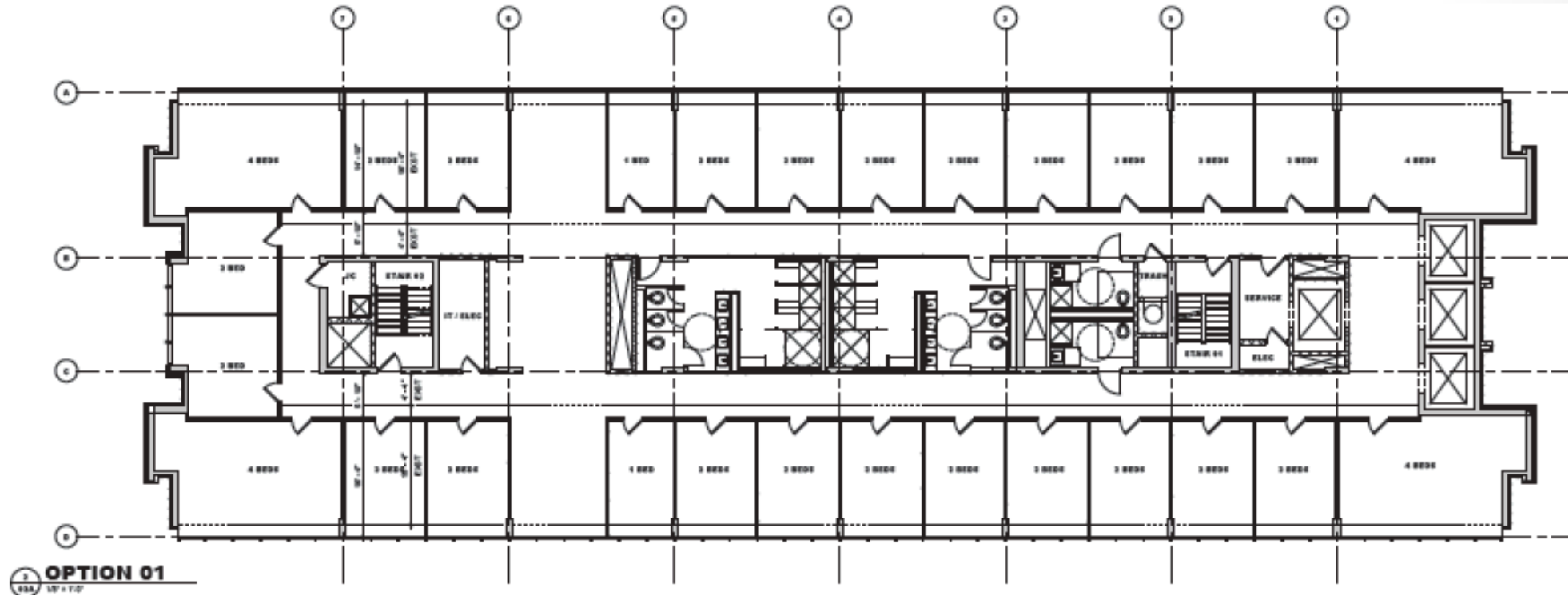
50% OF ROOMS ARE ACCESSIBLE PER NCBC 1109.2



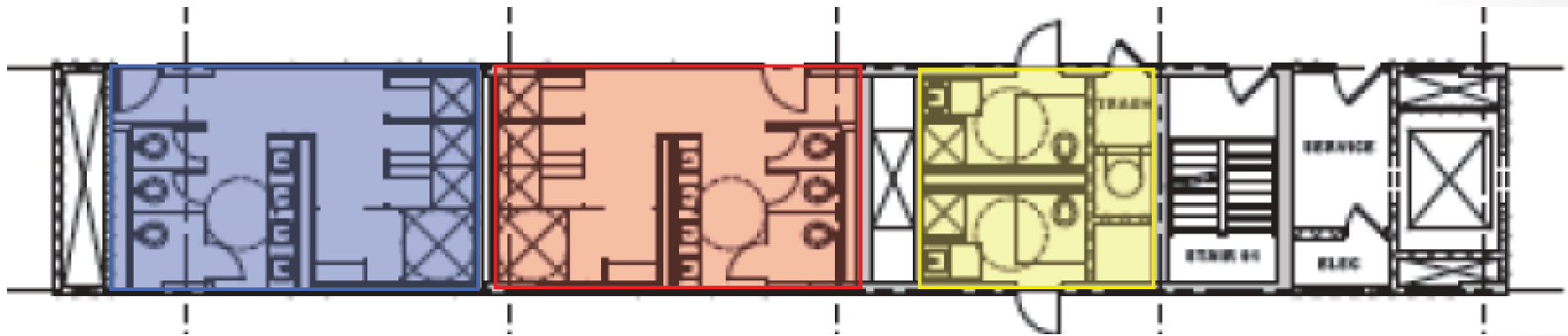
335.5 SQ. FT.

116.5 SF LESS THAN
TRADITIONAL BATHROOM

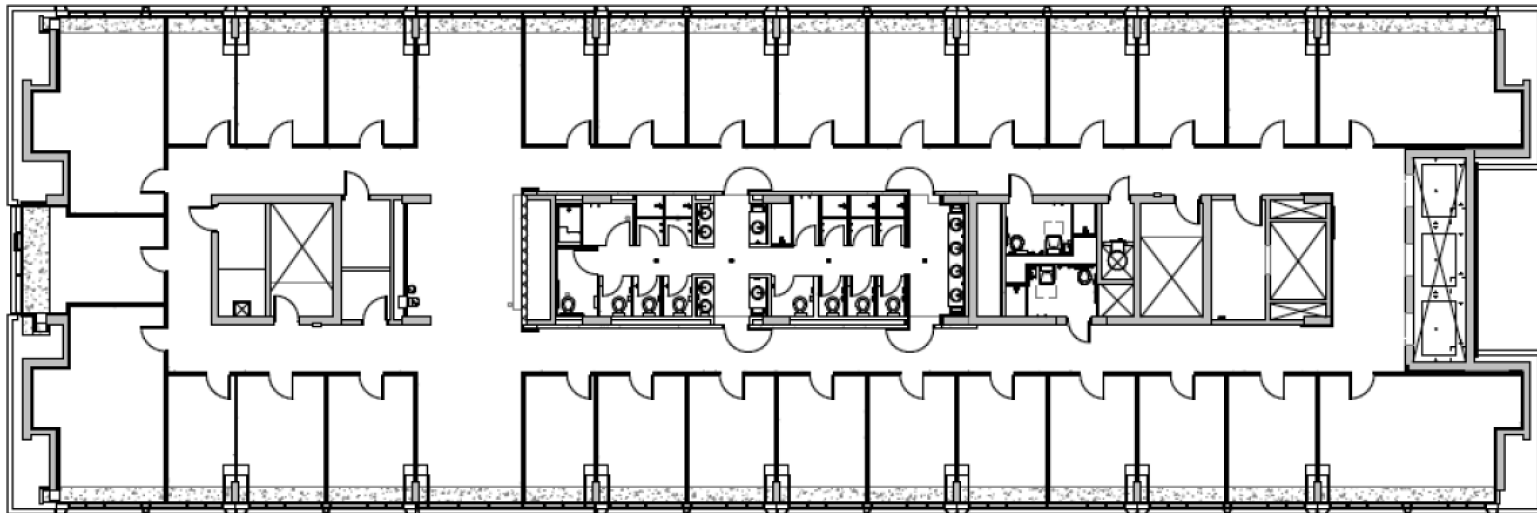
2021 IBC/IPC



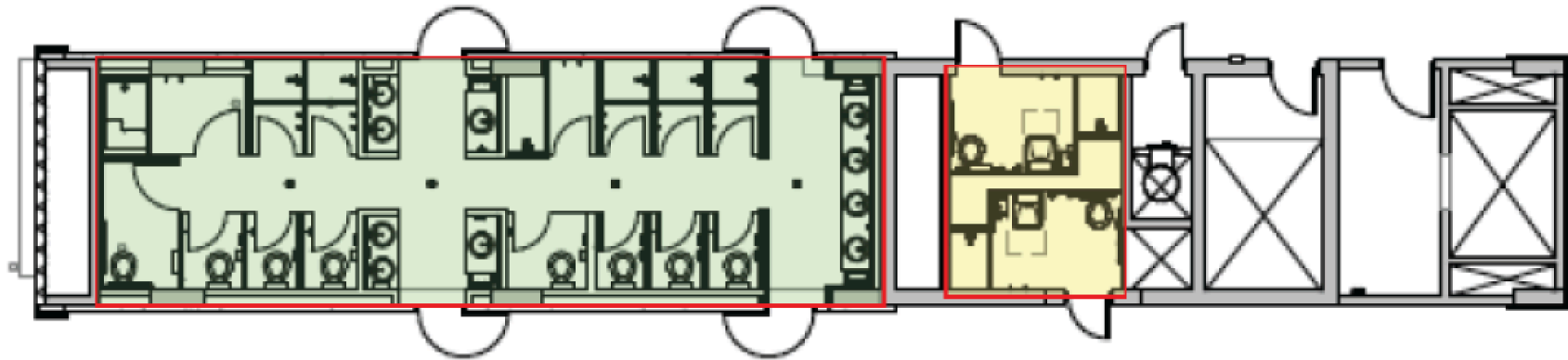
2021 IBC/IPC



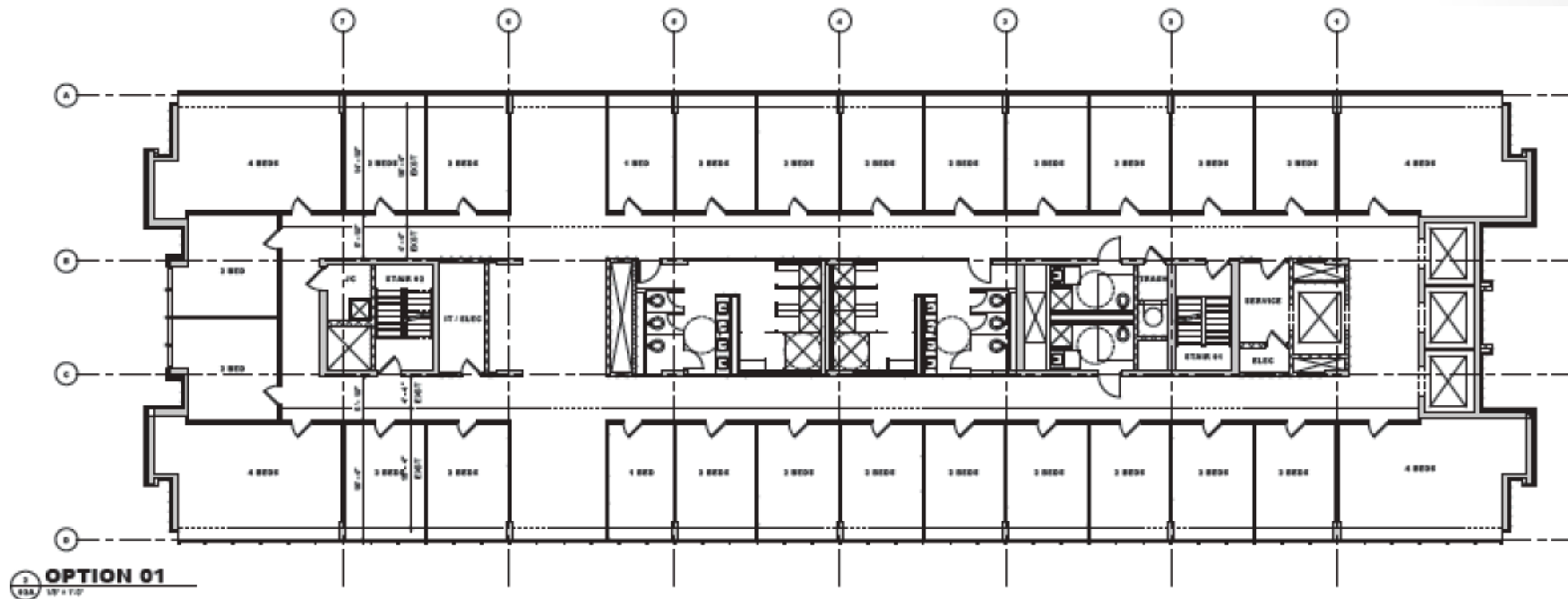
2021 IBC/IPC



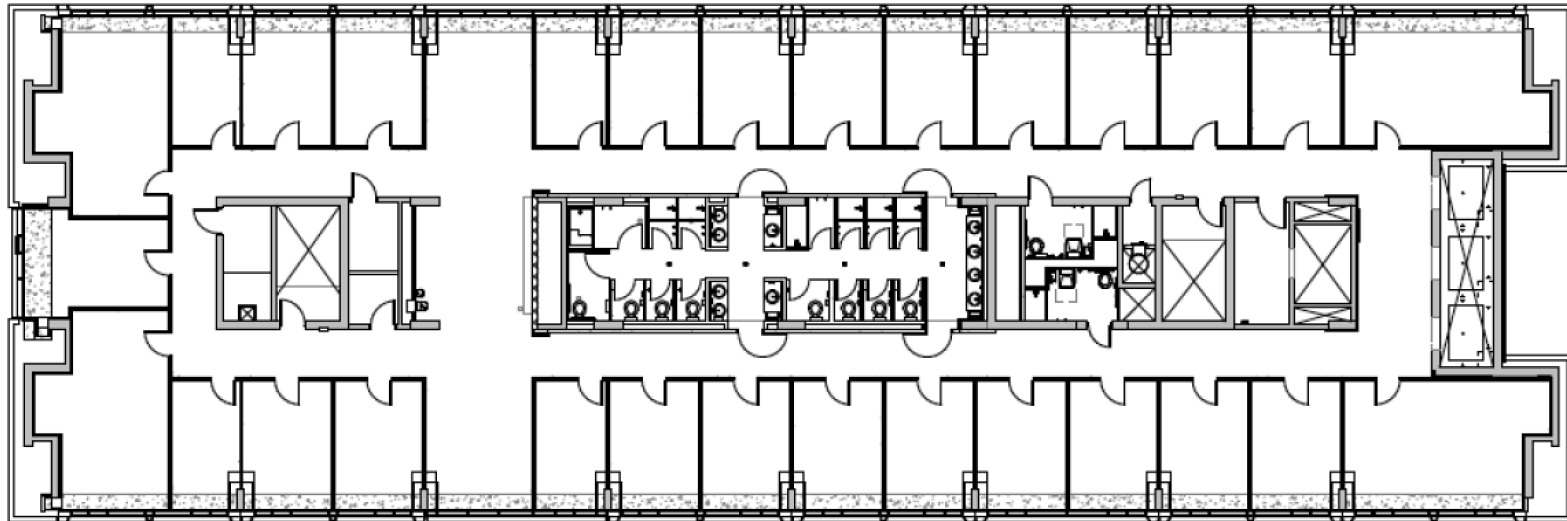
2021 IBC/IPC



2021 IBC/IPC



2021 IBC/IPC



2021 IBC/IPC



WHY A CHOICE?

INSERT PICTURE OF GREG AND SARAH

Questions?





Thank You For Attending



Session: Gender Neutral Bathrooms